

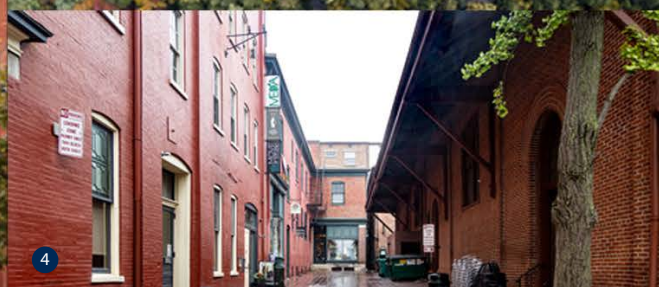
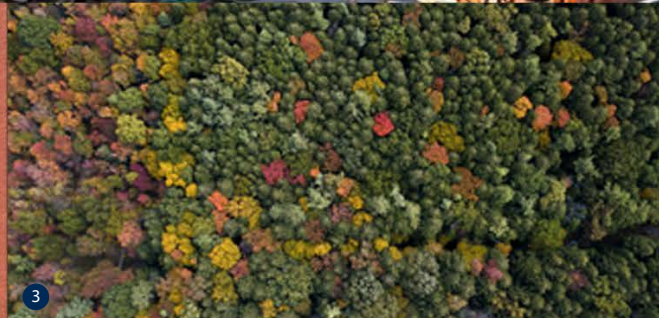
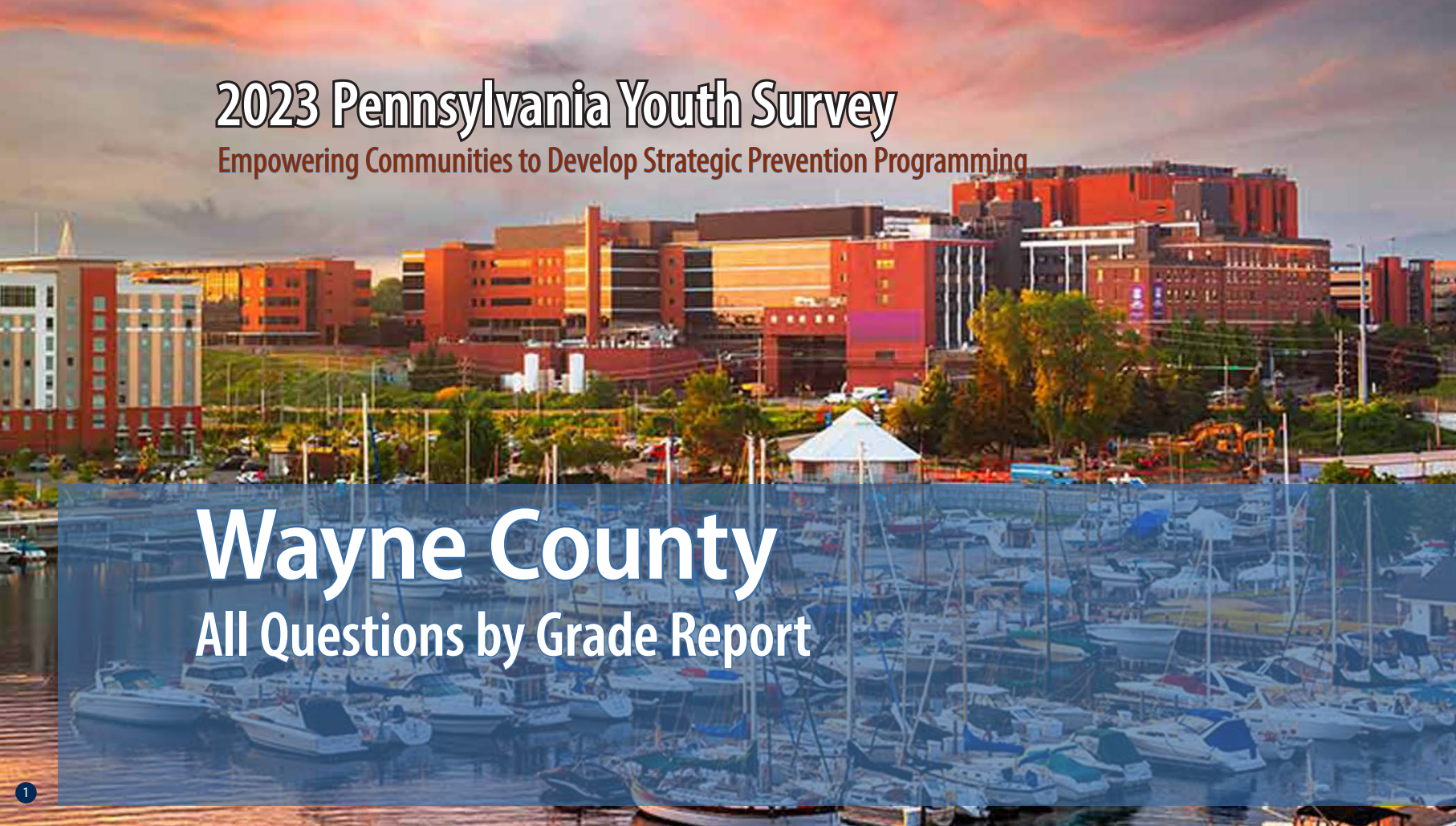
# 2023 Pennsylvania Youth Survey

Empowering Communities to Develop Strategic Prevention Programming

## Wayne County

### All Questions by Grade Report

Conducted by  
Pennsylvania Commission on  
Crime and Delinquency  
Pennsylvania Department of  
Drug and Alcohol Programs  
Pennsylvania Department  
of Education



1

2

3

4

5

Funding provided by



**pennsylvania**

COMMISSION ON CRIME  
AND DELINQUENCY



**pennsylvania**

DEPARTMENT OF DRUG AND  
ALCOHOL PROGRAMS



**pennsylvania**

DEPARTMENT OF EDUCATION

About the cover photographs:

1. The Bayfront, *Erie, PA*  
Credit: Sean Pavone/ISTock.com

2. No. 24 West Broadway, *Jim Thorpe, PA*  
Credit: Billy Wilson/Flicker.com

3. North Pennsylvania Woods, *PA*  
Credit: Caleb Martin/Flicker.com

4. West Grant Street, *Lancaster, PA*,  
Credit: Billy Wilson/Flicker.com

5. Mountain Laurel  
Credit: Unknown artist/Flicker.com

# PAYS ALL QUESTIONS BY GRADE REPORT

This report provides full results from the 2023 Pennsylvania Youth Survey (PAYS). For each survey item included in the survey, this report presents data for each response option by grade (and for all grades combined).

This report allows you to see not only the percent of students who selected each response option but also the number of students. These counts allow for you to, for example, add the counts for 10th and 12th grade to calculate a percentage for high school students. PAYS sponsors — the Pennsylvania Commission on Crime and Delinquency, Department of Drug and Alcohol Programs, and the Pennsylvania Department of Education — are supplying these data with the hope of aiding in more complete prevention and wellness planning.

## Notes to Consider Before Proceeding

This report shares data from the 2019, 2021, and 2023 PAYS administrations when data are available. If your county or district did not participate in one or more of these administrations, you will find “n/a” notations where relevant. Your full profile report also displays data from 2019, 2021, and 2023 when available.

Please note that the Pennsylvania Youth Survey (PAYS) was significantly revised from 2021 to 2023. Trend data are reported in this report when the data are comparable. When cells include an “n/a” notation, it can mean the question was either not asked in a previous administration or the question was revised in a

way that the 2023 data are not directly comparable. Also, note that any question with an \* at the end designates a question and/or response option that was part of the 2023 survey revision. Please see Appendix B of your Profile Report for a description of changes.

Studies indicate that most young people are truthful in answering anonymous prevention-centered surveys such as PAYS. To ensure valid survey results, the data here have made use of the same validity/honesty checks used in PAYS profile reports.

Data are displayed here when there are a minimum number of 25 responses at the grade level.

An overwhelming majority of the percentages shown in this report are out of ALL students. Any exceptions are noted for the question as it appears in this report.

If you need help reading, interpreting, or applying these data, please contact your local county drug and alcohol office or reach out to the Evidence-based Prevention and Intervention Support (EPIS) at:

<https://www.episcenter.psu.edu/index.php/paysquestion>

You will find the survey question data organized in the report in the following topic order:

- [Demographics](#)
- [Community Domain Risk Factors](#)
- [Community Domain Protective Factors](#)
- [School Domain Risk Factors](#)
- [School Domain Protective Factors](#)
- [Family Domain Risk Factors](#)
- [Family Domain Protective Factors](#)
- [Peer-Individual Risk Factors](#)
- [Peer-Individual Protective Factors](#)
- [Substance Use](#)
- [Gambling](#)
- [Other Concerning Behaviors](#)
- [Community & School Climate and Safety](#)
- [Mental Health Concerns and Suicide Risk](#)
- [Stressful Events and Sleep](#)

Participation																															
		County 2019					County 2021					County 2023																			
		6th		8th		10th		12th		Total		6th		8th		10th		12th		Total		6th		8th		10th		12th		Total	
Total number of survey respondents		487		457		485		459		1,888		434		490		438		462		1,824		399		432		291		271		1,393	

### Demographics

Question	Response	County 2019										County 2021										County 2023									
		6th		8th		10th		12th		Total		6th		8th		10th		12th		Total		6th		8th		10th		12th		Total	
		%	n	%	n	%	n	%	n	%	n	%	n	%	n	%	n	%	n	%	n	%	n	%	n	%	n	%	n	%	n
How old are you?	10	1.0	5	0.0	0	0.0	0	0.0	0	0.3	5	0.2	1	0.0	0	0.0	0	0.0	0	0.1	1	1.3	5	0.0	0	0.0	0	0.0	0	0.4	5
	11	75.4	367	0.0	0	0.0	0	0.0	0	19.4	367	79.0	343	0.0	0	0.0	0	0.0	0	18.8	343	72.9	291	0.0	0	0.0	0	0.0	0	20.9	291
	12	23.2	113	0.7	3	0.0	0	0.0	0	6.1	116	20.3	88	1.2	6	0.0	0	0.0	0	5.2	94	25.1	100	1.2	5	0.0	0	0.0	0	7.5	105
	13	0.4	2	74.8	342	0.0	0	0.0	0	18.2	344	0.5	2	80.6	395	0.0	0	0.0	0	21.8	397	0.8	3	74.5	322	0.0	0	0.0	0	23.3	325
	14	0.0	0	23.9	109	2.1	10	0.0	0	6.3	119	0.0	0	16.7	82	0.7	3	0.0	0	4.7	85	0.0	0	22.7	98	0.7	2	0.0	0	7.2	100
	15	0.0	0	0.7	3	72.4	351	0.0	0	18.8	354	0.0	0	1.4	7	80.4	352	0.0	0	19.7	359	0.0	0	1.6	7	73.9	215	0.0	0	15.9	222
	16	0.0	0	0.0	0	24.5	119	0.7	3	6.5	122	0.0	0	0.0	0	17.6	77	1.5	7	4.6	84	0.0	0	0.0	0	24.7	72	0.4	1	5.2	73
	17	0.0	0	0.0	0	1.0	5	76.9	353	19.0	358	0.0	0	0.0	0	0.9	4	82.5	381	21.1	385	0.0	0	0.0	0	0.3	1	79.0	214	15.4	215
	18	0.0	0	0.0	0	0.0	0	21.4	98	5.2	98	0.0	0	0.0	0	0.5	2	14.9	69	3.9	71	0.0	0	0.0	0	0.3	1	19.6	53	3.9	54
	19 or older	0.0	0	0.0	0	0.0	0	1.1	5	0.3	5	0.0	0	0.0	0	0.0	0	1.1	5	0.3	5	0.0	0	0.0	0	0.0	0	1.1	3	0.2	3
What grade are you in?	6th	100.0	487	0.0	0	0.0	0	0.0	0	25.8	487	100.0	434	0.0	0	0.0	0	0.0	0	23.8	434	100.0	399	0.0	0	0.0	0	0.0	0	28.6	399
	7th	0.0	0	0.0	0	0.0	0	0.0	0	0.0	0	0.0	0	0.0	0	0.0	0	0.0	0	0.0	0	0.0	0	0.0	0	0.0	0	0.0	0	0.0	0
	8th	0.0	0	100.0	457	0.0	0	0.0	0	24.2	457	0.0	0	100.0	490	0.0	0	0.0	0	26.9	490	0.0	0	100.0	432	0.0	0	0.0	0	31.0	432
	9th	0.0	0	0.0	0	0.0	0	0.0	0	0.0	0	0.0	0	0.0	0	0.0	0	0.0	0	0.0	0	0.0	0	0.0	0	0.0	0	0.0	0	0.0	0
	10th	0.0	0	0.0	0	100.0	485	0.0	0	25.7	485	0.0	0	0.0	0	100.0	438	0.0	0	24.0	438	0.0	0	0.0	0	100.0	291	0.0	0	20.9	291
	11th	0.0	0	0.0	0	0.0	0	0.0	0	0.0	0	0.0	0	0.0	0	0.0	0	0.0	0	0.0	0	0.0	0	0.0	0	0.0	0	0.0	0	0.0	0
	12th	0.0	0	0.0	0	0.0	0	100.0	459	24.3	459	0.0	0	0.0	0	0.0	0	100.0	462	25.3	462	0.0	0	0.0	0	0.0	0	100.0	271	19.5	271
Are you of Hispanic, Latino, or Spanish origin?	No, not of Hispanic, Latino, or Spanish origin	88.7	377	86.3	372	91.1	432	92.1	419	89.6	1,600	88.0	360	86.1	414	88.8	379	90.9	419	88.4	1,572	88.6	320	87.9	363	84.0	241	86.2	231	86.9	1,155
	Yes, Mexican, Mexican Am., Chicano	0.2	1	0.9	4	0.6	3	0.4	2	0.6	10	1.7	7	1.0	5	0.2	1	1.3	6	1.1	19	1.1	4	1.0	4	2.1	6	0.7	2	1.2	16
	Yes, Puerto Rican	4.7	20	5.8	25	5.1	24	5.7	26	5.3	95	3.4	14	5.8	28	6.3	27	4.6	21	5.1	90	3.9	14	6.1	25	5.6	16	6.7	18	5.5	73
	Yes, Cuban	0.5	2	0.2	1	0.2	1	0.0	0	0.2	4	0.0	0	0.8	4	0.0	0	0.2	1	0.3	5	0.3	1	0.0	0	1.0	3	0.7	2	0.5	6
	Yes, another Hispanic, Latino, or Spanish origin	5.9	25	6.7	29	3.0	14	1.8	8	4.3	76	6.8	28	6.2	30	4.7	20	3.0	14	5.2	92	6.1	22	5.1	21	7.3	21	5.6	15	5.9	79
What is your race?	White, Caucasian	88.7	385	92.7	395	94.1	444	95.3	426	92.7	1,650	91.1	370	88.4	421	94.1	401	96.9	445	92.6	1,637	90.8	314	90.1	372	90.4	255	92.9	247	90.9	1,188
	Black, African American	7.6	33	5.6	24	4.0	19	4.9	22	5.5	98	4.9	20	8.0	38	4.9	21	4.1	19	5.5	98	4.3	15	6.1	25	8.9	25	7.5	20	6.5	85
	American Indian or Alaska Native	4.1	18	4.0	17	2.8	13	2.9	13	3.4	61	4.4	18	3.8	18	3.3	14	1.5	7	3.2	57	5.5	19	4.1	17	3.5	10	4.5	12	4.4	58
	Asian Indian, Japanese, Native Hawaiian, Chinese, Korean, Guamanian or Chamorro, Filipino, Vietnamese, Samoan, Other Asian, Other Pacific Islander	3.2	14	4.2	18	3.6	17	3.1	14	3.5	63	4.7	19	4.0	19	4.5	19	2.6	12	3.9	69	3.8	13	5.3	22	5.7	16	3.8	10	4.7	61

Demographics (continued)																																
Question	Response	County 2019										County 2021										County 2023										
		6th		8th		10th		12th		Total		6th		8th		10th		12th		Total		6th		8th		10th		12th		Total		
		%	n	%	n	%	n	%	n	%	n	%	n	%	n	%	n	%	n	%	n	%	n	%	n	%	n	%	n	%	n	
Are you?	Female	48.0	226	47.2	212	50.4	238	46.3	209	48.0	885	47.7	207	42.0	205	45.5	198	50.2	232	46.3	842	46.0	182	48.5	208	46.7	135	50.0	135	47.7	660	
	Male	52.0	245	52.8	237	49.6	234	53.7	242	52.0	958	47.5	206	53.1	259	52.2	227	46.1	213	49.8	905	51.5	204	49.4	212	50.2	145	47.0	127	49.7	688	
	Other	0.0	0	0.0	0	0.0	0	0.0	0	0.0	0	4.8	21	4.9	24	2.3	10	3.7	17	4.0	72	2.5	10	2.1	9	3.1	9	3.0	8	2.6	36	
Think of where you live most of the time. Which of the following people live there with you?*	Mother(s)	90.5	427	88.8	398	89.2	429	87.5	398	89.0	1,652	92.6	399	88.5	431	88.4	387	89.8	413	89.8	1,630	92.8	362	90.2	386	86.9	251	84.4	228	89.1	1,227	
	Father(s)	68.9	325	67.9	304	68.4	329	71.4	325	69.1	1,283	75.4	325	65.7	320	70.3	308	69.3	319	70.0	1,272	73.1	285	74.8	320	66.8	193	69.3	187	71.5	985	
	Stepparent(s)	n/a	n/a	n/a	n/a	n/a	n/a	n/a	n/a	n/a	n/a	n/a	n/a	n/a	n/a	n/a	n/a	n/a	n/a	n/a	n/a	n/a	13.1	51	15.9	68	20.4	59	12.6	34	15.4	212
	Foster Parent(s)	n/a	n/a	n/a	n/a	n/a	n/a	n/a	n/a	n/a	n/a	n/a	n/a	n/a	n/a	n/a	n/a	n/a	n/a	n/a	n/a	n/a	1.8	7	0.7	3	0.3	1	0.0	0	0.8	11
	Grandparent(s)	n/a	n/a	n/a	n/a	n/a	n/a	n/a	n/a	n/a	n/a	n/a	n/a	n/a	n/a	n/a	n/a	n/a	n/a	n/a	n/a	n/a	12.6	49	12.4	53	9.3	27	14.8	40	12.3	169
	Other Adult(s)	4.2	20	2.7	12	1.5	7	2.2	10	2.6	49	2.6	11	2.7	13	0.9	4	3.3	15	2.4	43	6.7	26	4.4	19	4.5	13	8.1	22	5.8	80	
	Sibling(s)	n/a	n/a	n/a	n/a	n/a	n/a	n/a	n/a	n/a	n/a	n/a	n/a	n/a	n/a	n/a	n/a	n/a	n/a	n/a	n/a	n/a	68.7	268	66.8	286	66.4	192	62.6	169	66.4	915
	Other children	3.0	14	3.3	15	1.2	6	3.1	14	2.6	49	3.0	13	3.5	17	3.4	15	2.6	12	3.1	57	3.1	12	1.9	8	1.7	5	2.6	7	2.3	32	
What is the language you use most often at home?	English	98.2	445	98.2	433	99.0	473	99.6	451	98.7	1,802	97.9	414	98.3	475	98.9	432	98.9	455	98.5	1,776	97.7	378	97.2	412	97.6	283	99.3	268	97.8	1,341	
	Spanish	0.4	2	1.4	6	0.2	1	0.2	1	0.5	10	1.2	5	0.6	3	0.2	1	0.2	1	0.6	10	1.3	5	0.5	2	1.0	3	0.0	0	0.7	10	
	Another language	1.3	6	0.5	2	0.8	4	0.2	1	0.7	13	0.9	4	1.0	5	0.9	4	0.9	4	0.9	17	1.0	4	2.4	10	1.4	4	0.7	2	1.5	20	

Community Domain Risk Factor: Laws and Norms Favorable Toward Drug Use																															
Question	Response	County 2019										County 2021										County 2023									
		6th		8th		10th		12th		Total		6th		8th		10th		12th		Total		6th		8th		10th		12th		Total	
		%	n	%	n	%	n	%	n	%	n	%	n	%	n	%	n	%	n	%	n	%	n	%	n	%	n	%	n	%	n
If a kid drank some beer, wine, or hard liquor (for example, vodka, whiskey, gin, or rum) in your neighborhood, would he or she be caught by the police?	NO!	13.4	54	18.9	78	26.3	119	34.0	142	23.3	393	8.7	32	16.2	70	27.7	101	38.7	144	22.6	347	8.2	25	12.5	47	24.1	60	30.2	70	17.4	202
	no	31.3	126	45.9	189	59.8	271	55.0	230	48.4	816	27.4	101	52.2	226	51.8	189	44.9	167	44.4	683	29.4	90	45.4	171	51.0	127	51.7	120	43.6	508
	yes	34.1	137	23.5	97	9.3	42	7.4	31	18.2	307	36.7	135	24.9	108	15.3	56	10.8	40	22.0	339	37.9	116	29.7	112	18.1	45	12.5	29	25.9	302
	YES!	21.1	85	11.7	48	4.6	21	3.6	15	10.0	169	27.2	100	6.7	29	5.2	19	5.6	21	11.0	169	24.5	75	12.5	47	6.8	17	5.6	13	13.1	152
If a kid smoked marijuana in your neighborhood, would he or she be caught by the police?	NO!	8.9	36	17.4	72	27.2	123	35.0	148	22.4	379	6.7	24	16.6	72	26.6	97	37.7	140	21.8	333	7.5	23	13.6	51	25.4	63	32.2	75	18.2	212
	no	23.9	97	39.7	164	55.5	251	52.2	221	43.3	733	19.4	70	43.8	190	50.5	184	45.3	168	40.0	612	27.2	83	40.4	152	47.2	117	49.4	115	40.2	467
	yes	36.5	148	27.8	115	11.7	53	8.7	37	20.8	353	40.6	146	29.0	126	15.9	58	10.5	39	24.1	369	35.4	108	33.0	124	19.4	48	12.4	29	26.6	309
	YES!	30.8	125	15.0	62	5.5	25	4.0	17	13.5	229	33.3	120	10.6	46	6.9	25	6.5	24	14.1	215	29.8	91	13.0	49	8.1	20	6.0	14	15.0	174
How wrong would most adults (over 21) in your neighborhood think it was for kids your age:																															
To drink alcohol?	Not Wrong at All	4.1	17	5.6	23	5.3	24	8.7	37	6.0	101	2.2	8	5.6	24	8.6	32	13.2	49	7.3	113	4.9	15	5.1	19	5.2	13	11.2	26	6.3	73
	A Little Bit Wrong	4.1	17	8.6	35	25.3	115	35.8	152	18.8	319	7.6	28	10.0	43	23.5	87	28.8	107	17.2	265	6.8	21	13.9	52	21.4	53	26.3	61	16.1	187
	Wrong	17.3	71	29.2	119	39.4	179	33.5	142	30.1	511	13.8	51	32.7	141	28.6	106	32.3	120	27.1	418	18.5	57	27.9	104	27.8	69	35.3	82	26.9	312
	Very wrong	74.4	305	56.6	231	30.0	136	21.9	93	45.1	765	76.4	282	51.7	223	39.2	145	25.8	96	48.4	746	69.8	215	53.1	198	45.6	113	27.2	63	50.7	589

\*The Pennsylvania Youth Survey (PAYS) was significantly revised from 2021 to 2023. Trend data are reported in this report when the data are comparable. When cells include an "n/a" notation, it means the question was either not asked in a previous administration or the question was revised in a way that the 2023 data are not directly comparable. Please note that any question with an \* at the end designates a question and/or response option that was part of this 2023 survey revision. Please see Appendix B of your Profile Report for a description of changes

### Community Domain Risk Factor: Laws and Norms Favorable Toward Drug Use (continued)

Question	Response	County 2019										County 2021										County 2023									
		6th		8th		10th		12th		Total		6th		8th		10th		12th		Total		6th		8th		10th		12th		Total	
		%	n	%	n	%	n	%	n	%	n	%	n	%	n	%	n	%	n	%	n	%	n	%	n	%	n	%	n	%	n
How wrong would most adults (over 21) in your neighborhood think it was for kids your age:																															
To smoke cigarettes?	Not Wrong at All	4.1	17	5.1	21	3.1	14	5.0	21	4.3	73	1.4	5	5.6	24	6.8	25	6.5	24	5.1	78	5.3	16	3.8	14	4.0	10	7.4	17	4.9	57
	A Little Bit Wrong	2.7	11	4.4	18	13.0	59	18.7	79	9.9	167	3.8	14	5.1	22	12.2	45	20.0	74	10.1	155	3.0	9	9.9	37	13.0	32	17.0	39	10.1	117
	Wrong	13.7	56	20.8	85	35.7	162	39.6	167	27.7	470	13.6	50	25.6	110	27.8	103	35.9	133	25.8	396	14.1	43	21.0	78	26.7	66	35.2	81	23.2	268
	Very wrong	79.5	326	69.7	285	48.2	219	36.7	155	58.1	985	81.2	298	63.6	273	53.2	197	37.6	139	59.0	907	77.6	236	65.3	243	56.3	139	40.4	93	61.7	711
How wrong would most adults (over 21) in your neighborhood think it was for kids your age:																															
To use marijuana?	Not Wrong at All	4.1	17	5.4	22	6.8	31	6.6	28	5.8	98	1.1	4	6.1	26	7.0	26	9.2	34	5.9	90	4.3	13	3.8	14	4.5	11	9.2	21	5.2	59
	A Little Bit Wrong	1.0	4	4.4	18	16.3	74	22.2	94	11.2	190	2.7	10	4.9	21	14.6	54	20.5	76	10.5	161	2.3	7	8.4	31	13.5	33	18.3	42	9.9	113
	Wrong	9.0	37	16.2	66	31.6	144	33.3	141	22.9	388	9.5	35	20.5	88	24.4	90	32.4	120	21.7	333	10.0	30	18.6	69	30.2	74	27.9	64	20.7	237
	Very wrong	85.9	352	74.0	301	45.3	206	38.0	161	60.1	1,020	86.6	318	68.5	294	53.9	199	37.8	140	62.0	951	83.3	250	69.3	257	51.8	127	44.5	102	64.3	736

### Community Domain Risk Factor: Low Neighborhood Attachment

Question	Response	County 2019										County 2021										County 2023									
		6th		8th		10th		12th		Total		6th		8th		10th		12th		Total		6th		8th		10th		12th		Total	
		%	n	%	n	%	n	%	n	%	n	%	n	%	n	%	n	%	n	%	n	%	n	%	n	%	n	%	n	%	n
I like my neighborhood	NO!	5.6	24	10.9	46	8.5	38	8.7	37	8.4	145	7.4	27	8.7	38	11.3	42	11.4	42	9.7	149	9.7	31	6.6	25	11.1	28	14.0	33	9.9	117
	no	10.0	43	14.5	61	21.2	95	16.7	71	15.6	270	8.8	32	16.6	72	15.9	59	19.6	72	15.3	235	9.4	30	16.9	64	18.6	47	16.6	39	15.2	180
	yes	41.4	178	46.0	194	50.6	227	54.8	233	48.2	832	39.7	144	47.6	207	49.1	182	54.8	201	47.8	734	40.4	129	50.9	193	54.9	139	48.9	115	48.6	576
	YES!	43.0	185	28.7	121	19.8	89	19.8	84	27.8	479	44.1	160	27.1	118	23.7	88	14.2	52	27.2	418	40.4	129	25.6	97	15.4	39	20.4	48	26.4	313
I'd like to get out of my neighborhood	NO!	45.8	195	37.2	156	23.7	106	19.3	82	31.4	539	53.4	194	35.3	153	31.3	116	19.9	73	34.9	536	51.8	161	39.6	149	23.6	59	24.8	58	36.5	427
	no	33.1	141	38.4	161	41.5	186	38.2	162	37.9	650	29.5	107	39.2	170	36.7	136	32.2	118	34.6	531	30.2	94	37.2	140	38.8	97	29.5	69	34.2	400
	yes	13.1	56	13.6	57	23.9	107	26.4	112	19.3	332	10.5	38	15.7	68	20.2	75	31.1	114	19.2	295	9.6	30	17.3	65	26.4	66	28.2	66	19.4	227
	YES!	8.0	34	10.7	45	10.9	49	16.0	68	11.4	196	6.6	24	9.9	43	11.9	44	16.9	62	11.3	173	8.4	26	5.9	22	11.2	28	17.5	41	10.0	117
If I had to move, I would miss the neighborhood I now live in	NO!	6.8	29	12.9	55	10.2	46	9.8	42	9.9	172	10.7	39	12.1	53	12.2	46	16.1	59	12.8	197	10.5	33	8.2	31	14.6	37	14.5	34	11.4	135
	no	13.0	55	19.3	82	24.9	113	24.1	103	20.4	353	10.4	38	21.7	95	21.3	80	26.4	97	20.1	310	9.6	30	23.9	90	29.1	74	24.3	57	21.3	251
	yes	33.7	143	33.4	142	43.5	197	46.8	200	39.4	682	26.4	96	36.4	159	39.9	150	42.2	155	36.3	560	29.9	94	34.2	129	36.2	92	39.6	93	34.6	408
	YES!	46.5	197	34.4	146	21.4	97	19.2	82	30.2	522	52.5	191	29.7	130	26.6	100	15.3	56	30.9	477	50.0	157	33.7	127	20.1	51	21.7	51	32.7	386

## Community Domain Risk Factor: Perceived Availability of Drugs and Handguns

Question	Response	County 2019										County 2021										County 2023									
		6th		8th		10th		12th		Total		6th		8th		10th		12th		Total		6th		8th		10th		12th		Total	
		%	n	%	n	%	n	%	n	%	n	%	n	%	n	%	n	%	n	%	n	%	n	%	n	%	n	%	n	%	n
How easy would it be for you to get any, if you wanted to get any of the following:																															
Beer, wine, or hard liquor (for example, vodka, whiskey, gin, or rum)?	Very hard	64.2	267	45.8	193	23.3	107	14.3	61	36.4	628	72.8	262	42.6	187	32.3	119	24.5	91	42.8	659	74.3	228	56.8	217	34.9	87	26.6	62	50.7	594
	Sort of hard	17.1	71	19.7	83	20.0	92	17.6	75	18.6	321	14.7	53	22.6	99	21.2	78	15.3	57	18.6	287	12.7	39	22.5	86	24.9	62	22.3	52	20.4	239
	Sort of easy	9.1	38	20.4	86	31.3	144	28.3	121	22.6	389	6.4	23	21.6	95	23.4	86	28.8	107	20.2	311	6.5	20	13.1	50	21.3	53	27.9	65	16.1	188
	Very easy	9.6	40	14.0	59	25.4	117	39.8	170	22.4	386	6.1	22	13.2	58	23.1	85	31.5	117	18.3	282	6.5	20	7.6	29	18.9	47	23.2	54	12.8	150
How easy would it be for you to get any, if you wanted to get any of the following:																															
Cigarettes?	Very hard	79.6	328	66.2	278	45.7	210	25.8	110	53.9	926	82.9	296	65.2	285	53.5	197	39.3	145	60.3	923	82.7	254	74.7	284	55.0	137	42.7	99	66.3	774
	Sort of hard	7.5	31	11.0	46	17.2	79	12.6	54	12.2	210	7.8	28	14.0	61	16.3	60	16.0	59	13.6	208	9.8	30	11.6	44	22.1	55	21.1	49	15.2	178
	Sort of easy	5.8	24	11.4	48	19.6	90	18.7	80	14.1	242	4.2	15	11.7	51	16.0	59	22.0	81	13.5	206	4.2	13	7.1	27	13.7	34	16.4	38	9.6	112
	Very easy	7.0	29	11.4	48	17.6	81	42.9	183	19.8	341	5.0	18	9.2	40	14.1	52	22.8	84	12.7	194	3.3	10	6.6	25	9.2	23	19.8	46	8.9	104
How easy would it be for you to get any, if you wanted to get any of the following:																															
A handgun?	Very hard	74.8	308	69.1	289	63.7	290	56.2	237	65.8	1,124	80.6	290	70.1	307	64.8	237	57.6	212	68.3	1,046	76.5	234	76.4	291	67.1	165	64.2	149	72.0	839
	Sort of hard	11.4	47	12.0	50	16.7	76	17.5	74	14.5	247	10.0	36	13.7	60	12.3	45	17.9	66	13.5	207	11.4	35	11.0	42	13.8	34	14.7	34	12.4	145
	Sort of easy	7.0	29	8.1	34	9.9	45	12.3	52	9.4	160	4.4	16	8.2	36	12.0	44	12.5	46	9.3	142	6.2	19	7.3	28	11.8	29	10.3	24	8.6	100
	Very easy	6.8	28	10.8	45	9.7	44	14.0	59	10.3	176	5.0	18	8.0	35	10.9	40	12.0	44	8.9	137	5.9	18	5.2	20	7.3	18	10.8	25	7.0	81
How easy would it be for you to get any, if you wanted to get any of the following:																															
A drug like cocaine, LSD, heroin, or amphetamines?	Very hard	94.1	386	89.8	378	77.3	354	54.8	233	78.8	1,351	96.1	344	88.8	388	82.5	301	70.1	258	84.5	1,291	93.8	287	92.4	352	82.3	204	76.2	176	87.4	1,019
	Sort of hard	2.0	8	4.3	18	12.4	57	21.4	91	10.2	174	1.7	6	6.4	28	10.7	39	15.8	58	8.6	131	3.3	10	3.4	13	10.9	27	10.8	25	6.4	75
	Sort of easy	0.7	3	3.3	14	6.3	29	15.3	65	6.5	111	0.3	1	2.1	9	4.1	15	7.1	26	3.3	51	1.0	3	1.8	7	4.4	11	6.5	15	3.1	36
	Very easy	3.2	13	2.6	11	3.9	18	8.5	36	4.6	78	2.0	7	2.7	12	2.7	10	7.1	26	3.6	55	2.0	6	2.4	9	2.4	6	6.5	15	3.1	36
How easy would it be for you to get any, if you wanted to get any of the following:																															
Marijuana?	Very hard	93.2	384	73.6	310	43.5	200	23.3	99	57.8	993	94.1	332	76.0	332	54.9	201	37.0	137	65.7	1,002	91.2	279	83.2	317	54.8	136	44.4	103	71.6	835
	Sort of hard	2.9	12	9.5	40	17.8	82	12.7	54	10.9	188	2.3	8	12.4	54	15.8	58	18.1	67	12.3	187	4.6	14	5.5	21	16.1	40	14.2	33	9.3	108
	Sort of easy	0.5	2	8.8	37	17.0	78	20.5	87	11.9	204	1.7	6	7.3	32	13.4	49	17.0	63	9.8	150	2.0	6	6.6	25	14.5	36	18.1	42	9.3	109
	Very easy	3.4	14	8.1	34	21.7	100	43.4	184	19.3	332	2.0	7	4.3	19	15.8	58	27.8	103	12.3	187	2.3	7	4.7	18	14.5	36	23.3	54	9.9	115
How easy would it be for you to get any, if you wanted to get any of the following:																															
Prescription drugs not prescribed to you?	Very hard	69.5	290	62.7	266	52.2	242	40.8	183	56.0	981	76.0	291	57.3	272	56.9	234	48.1	201	59.2	998	76.1	232	72.4	276	54.8	136	61.6	143	67.5	787
	Sort of hard	15.1	63	20.3	86	22.6	105	20.3	91	19.7	345	16.2	62	21.5	102	21.7	89	23.4	98	20.8	351	11.1	34	11.5	44	19.0	47	17.2	40	14.2	165
	Sort of easy	7.2	30	13.2	56	14.0	65	25.7	115	15.2	266	5.5	21	14.3	68	12.7	52	17.7	74	12.7	215	7.2	22	8.9	34	12.5	31	8.6	20	9.2	107
	Very easy	8.2	34	3.8	16	11.2	52	13.2	59	9.2	161	2.3	9	6.9	33	8.8	36	10.8	45	7.3	123	5.6	17	7.1	27	13.7	34	12.5	29	9.2	107

**Community Domain Risk Factor: Perceived Availability of Drugs and Handguns (continued)**

Question	Response	County 2019										County 2021										County 2023									
		6th		8th		10th		12th		Total		6th		8th		10th		12th		Total		6th		8th		10th		12th		Total	
		%	n	%	n	%	n	%	n	%	n	%	n	%	n	%	n	%	n	%	n	%	n	%	n	%	n	%	n	%	n
If you drank alcohol during the past 12 months, how did you usually get it? (Please note the data reported here are of ALL students, including non-users. Profile reports produced for PAYS report these data only of past-year users. Because these data are of ALL students, the numbers and percentages here will not align with the data presented in your profile report. In 2021/2023, this question involved skip logic, and students reporting that they had not used alcohol in their lifetime were not shown this question. In the data, those not using in their lifetime were recoded as "Did not drink any alcohol" for this item.)	Did not drink any alcohol	93.0	265	80.1	221	60.0	183	40.7	109	68.6	778	98.3	404	88.4	413	76.6	305	63.4	246	82.2	1,368	97.6	369	92.7	380	80.4	217	65.0	160	86.3	1,126
	Bought it in a store	0.0	0	0.4	1	1.6	5	1.9	5	1.0	11	2.8	1	0.0	0	4.2	7	12.6	25	6.0	33	0.0	0	0.0	0	0.7	2	1.6	4	0.5	6
	Bought it at a restaurant, bar or club	0.0	0	0.4	1	0.7	2	1.1	3	0.5	6	0.0	0	0.7	1	1.8	3	6.0	12	2.9	16	0.0	0	0.0	0	0.7	2	0.8	2	0.3	4
	Bought it at a public event such as a concert or sporting event	0.4	1	0.4	1	0.7	2	1.1	3	0.6	7	0.0	0	0.0	0	4.2	7	5.5	11	3.3	18	0.0	0	0.0	0	0.7	2	0.0	0	0.2	2
	Gave someone money to buy it for me	0.4	1	1.4	4	8.9	27	22.8	61	8.2	93	0.0	0	1.4	2	13.3	22	27.1	54	14.2	78	0.0	0	0.0	0	2.2	6	8.1	20	2.0	26
	Parents/caregivers provided it to me	4.9	14	4.0	11	11.5	35	13.4	36	8.5	96	11.1	4	13.5	20	18.2	30	22.1	44	17.9	98	1.6	6	3.9	16	5.2	14	11.8	29	5.0	65
	Friends' parents/caregivers provided it to me	1.1	3	2.2	6	6.9	21	11.6	31	5.4	61	0.0	0	2.0	3	8.5	14	21.6	43	10.9	60	0.3	1	1.0	4	3.7	10	8.1	20	2.7	35
	Friends, brothers, or sisters over 21 provided it to me	1.1	3	3.3	9	7.2	22	20.9	56	7.9	90	0.0	0	5.4	8	12.1	20	20.6	41	12.6	69	0.3	1	0.5	2	6.3	17	11.4	28	3.7	48
	Friends, brothers, or sisters under 21 provided it to me	0.0	0	2.9	8	4.6	14	10.4	28	4.4	50	2.8	1	8.1	12	12.7	21	14.1	28	11.3	62	0.0	0	1.0	4	2.6	7	4.1	10	1.6	21
	Other relatives (uncles, aunts, cousins, grandparents, etc.) provided it to me	1.4	4	2.2	6	6.6	20	10.1	27	5.0	57	2.8	1	12.2	18	10.3	17	15.1	30	12.0	66	0.3	1	3.4	14	3.3	9	5.7	14	2.9	38
	Other source provided it to me	2.1	6	4.3	12	8.5	26	18.7	50	8.3	94	5.6	2	8.1	12	15.2	25	22.6	45	15.3	84	0.0	0	1.5	6	3.3	9	8.5	21	2.8	36
Took without permission, stole, or found it (my home, friend's home, store, etc.)	1.4	4	10.1	28	14.4	44	14.2	38	10.1	114	5.6	2	16.9	25	17.6	29	20.1	40	17.5	96	0.5	2	1.7	7	8.5	23	6.5	16	3.7	48	
If you used any prescription drugs without a prescription during the last 12 months, how did you get them? (Please note the data reported here are of ALL students, including non-users. Profile reports produced for PAYS report these data only of past-year users. Because these data are of ALL students, the numbers and percentages here will not align with the data presented in your profile report)	I did not take any prescription drugs without a doctor's prescription	99.3	277	94.2	259	95.1	289	92.9	250	95.4	1,075	98.4	306	96.5	408	95.0	325	95.1	332	96.2	1,371	99.7	398	99.8	431	98.6	287	97.8	264	99.1	1,380
	Took them from a family member living in my home	0.4	1	2.9	8	1.3	4	1.5	4	1.5	17	0.6	2	2.4	10	1.5	5	2.3	8	1.8	25	0.3	1	0.2	1	0.0	0	0.7	2	0.3	4
	Took them from other relatives not living in my home	0.4	1	0.4	1	0.7	2	0.0	0	0.4	4	1.0	3	0.5	2	0.9	3	0.3	1	0.6	9	0.0	0	0.0	0	0.0	0	0.4	1	0.1	1
	Took them from someone not related to me	0.0	0	0.4	1	0.0	0	0.7	2	0.3	3	0.3	1	0.5	2	0.6	2	1.4	5	0.7	10	0.0	0	0.0	0	0.0	0	0.4	1	0.1	1
	A friend or family member gave them to me	0.0	0	2.9	8	3.0	9	2.6	7	2.1	24	1.6	5	1.9	8	1.8	6	2.3	8	1.9	27	0.0	0	0.0	0	1.4	4	0.7	2	0.4	6
	Bought them from someone	0.0	0	0.0	0	1.3	4	3.0	8	1.1	12	0.6	2	1.4	6	1.2	4	1.7	6	1.3	18	0.0	0	0.0	0	0.0	0	1.1	3	0.2	3
	Ordered them over the Internet	0.0	0	0.7	2	0.3	1	0.7	2	0.4	5	0.3	1	0.7	3	0.9	3	1.1	4	0.8	11	0.0	0	0.0	0	0.0	0	0.4	1	0.1	1







**School Domain Risk Factor: Low Commitment to School (continued)**

Question	Response	County 2019										County 2021										County 2023									
		6th		8th		10th		12th		Total		6th		8th		10th		12th		Total		6th		8th		10th		12th		Total	
		%	n	%	n	%	n	%	n	%	n	%	n	%	n	%	n	%	n	%	n	%	n	%	n	%	n	%	n	%	n
How often do you feel that the school work you are assigned is meaningful and important?	Never	8.7	38	15.8	68	15.2	71	18.6	82	14.6	259	8.5	33	11.3	51	18.3	71	20.8	79	14.6	234	11.5	38	13.0	51	12.3	32	13.1	32	12.5	153
	Seldom	4.8	21	11.2	48	20.0	93	24.1	106	15.1	268	5.7	22	13.8	62	17.3	67	22.7	86	14.8	237	9.1	30	12.5	49	22.2	58	22.9	56	15.7	193
	Sometimes	29.2	128	33.3	143	43.3	202	34.8	153	35.3	626	26.7	103	42.9	193	42.8	166	38.5	146	37.9	608	31.1	103	42.7	167	38.3	100	43.7	107	38.8	477
	Often	29.2	128	24.7	106	15.0	70	15.7	69	21.0	373	28.2	109	21.8	98	15.5	60	12.1	46	19.5	313	26.6	88	18.2	71	20.3	53	15.9	39	20.4	251
	Almost Always	28.2	124	15.1	65	6.4	30	6.8	30	14.0	249	30.8	119	10.2	46	6.2	24	5.8	22	13.2	211	21.8	72	13.6	53	6.9	18	4.5	11	12.5	154
Now thinking back over the past year in school, how often did you:																															
Enjoy being in school?	Never	9.7	43	15.0	65	12.8	60	10.2	45	11.9	213	8.8	34	13.7	62	15.4	60	16.1	61	13.5	217	7.6	25	13.3	52	12.3	32	13.5	33	11.6	142
	Seldom	6.5	29	9.2	40	13.9	65	16.8	74	11.7	208	7.0	27	11.3	51	11.3	44	17.4	66	11.7	188	13.3	44	11.0	43	14.2	37	12.2	30	12.6	154
	Sometimes	34.5	153	32.5	141	39.0	182	35.0	154	35.3	630	29.2	113	38.8	175	36.7	143	37.6	143	35.7	574	29.7	98	39.2	153	41.8	109	37.6	92	36.9	452
	Often	25.2	112	27.4	119	25.1	117	27.7	122	26.3	470	28.2	109	23.1	104	26.2	102	22.1	84	24.8	399	28.5	94	24.6	96	23.8	62	27.3	67	26.0	319
	Almost Always	24.1	107	15.9	69	9.2	43	10.2	45	14.8	264	26.9	104	13.1	59	10.5	41	6.8	26	14.3	230	20.9	69	11.8	46	8.0	21	9.4	23	13.0	159
Now thinking back over the past year in school, how often did you:																															
Hate being in school?	Never	22.8	101	14.3	62	8.1	38	8.2	36	13.3	237	21.7	83	10.7	48	9.0	35	7.1	27	12.1	193	15.0	50	9.5	37	8.1	21	9.9	24	10.8	132
	Seldom	18.7	83	18.4	80	16.3	76	21.6	95	18.7	334	26.4	101	17.8	80	20.2	78	16.1	61	20.0	320	15.9	53	18.3	71	13.9	36	20.6	50	17.2	210
	Sometimes	39.1	173	35.7	155	36.2	169	33.3	146	36.1	643	26.7	102	34.4	155	33.9	131	36.1	137	32.9	525	32.1	107	32.6	127	34.4	89	30.0	73	32.4	396
	Often	12.0	53	16.1	70	24.8	116	24.6	108	19.5	347	13.4	51	21.8	98	21.4	83	26.1	99	20.7	331	19.5	65	22.6	88	29.0	75	24.3	59	23.4	287
	Almost Always	7.4	33	15.4	67	14.6	68	12.3	54	12.5	222	11.8	45	15.3	69	15.5	60	14.5	55	14.3	229	17.4	58	17.0	66	14.7	38	15.2	37	16.3	199
Now thinking back over the past year in school, how often did you:																															
Try to do best work in school?	Never	2.0	9	3.9	17	1.7	8	3.0	13	2.6	47	1.3	5	3.3	15	3.6	14	3.7	14	3.0	48	1.2	4	1.5	6	3.5	9	3.3	8	2.2	27
	Seldom	1.4	6	2.5	11	5.2	24	6.6	29	3.9	70	1.3	5	3.5	16	5.4	21	6.9	26	4.2	68	1.2	4	3.8	15	5.0	13	7.0	17	4.0	49
	Sometimes	6.8	30	15.2	66	19.3	90	19.6	86	15.3	272	6.0	23	16.2	73	20.0	78	21.7	82	16.0	256	6.9	23	12.6	49	23.1	60	22.1	54	15.2	186
	Often	18.6	82	28.1	122	34.1	159	35.3	155	29.1	518	18.2	70	26.5	120	28.5	111	28.6	108	25.5	409	20.8	69	28.7	112	30.4	79	22.5	55	25.7	315
	Almost Always	71.2	314	50.2	218	39.7	185	35.5	156	49.0	873	73.2	281	50.4	228	42.6	166	39.2	148	51.3	823	69.8	231	53.3	208	38.1	99	45.1	110	52.9	648













### Family Domain Risk Factor: Parental Attitudes Favorable Toward Antisocial Behavior & Drugs (continued)

Question	Response	County 2019										County 2021										County 2023									
		6th		8th		10th		12th		Total		6th		8th		10th		12th		Total		6th		8th		10th		12th		Total	
		%	n	%	n	%	n	%	n	%	n	%	n	%	n	%	n	%	n	%	n	%	n	%	n	%	n	%	n	%	n
How wrong do your parents/caregivers feel it would be for you to:																															
Use marijuana*	Not at all wrong	3.3	14	4.5	19	4.3	20	10.4	44	5.6	97	1.7	6	2.8	12	6.8	26	8.3	31	4.9	75	5.5	17	3.5	13	5.6	14	9.4	22	5.7	66
	A little bit wrong	1.0	4	4.0	17	10.9	51	14.1	60	7.6	132	0.6	2	3.9	17	7.6	29	14.2	53	6.6	101	0.3	1	3.8	14	8.4	21	12.0	28	5.5	64
	Wrong	5.2	22	8.9	38	20.6	96	18.8	80	13.6	236	6.3	22	12.2	53	18.5	71	25.7	96	15.8	242	4.8	15	8.9	33	20.0	50	18.8	44	12.2	142
	Very wrong	90.5	380	82.6	351	64.2	300	56.7	241	73.2	1,272	91.4	317	81.1	351	67.1	257	51.7	193	72.8	1,118	89.4	277	83.9	312	66.0	165	59.8	140	76.7	894
How wrong do your parents/caregivers feel it would be for you to:																															
Use prescription drugs not prescribed to you?*	Not at all wrong	5.3	23	4.8	21	3.8	18	2.9	13	4.2	75	5.3	22	4.8	23	2.8	12	3.1	14	4.0	71	5.2	16	3.0	11	3.2	8	5.5	13	4.1	48
	A little bit wrong	3.9	17	2.1	9	3.2	15	4.4	20	3.4	61	1.4	6	1.9	9	2.1	9	3.1	14	2.1	38	1.3	4	1.6	6	3.6	9	4.7	11	2.6	30
	Wrong	16.1	70	14.2	62	13.1	62	14.2	64	14.4	258	10.8	45	12.2	59	14.2	61	11.7	53	12.2	218	10.0	31	10.8	40	14.8	37	10.6	25	11.4	133
	Very wrong	74.7	325	78.9	344	80.0	379	78.4	353	78.1	1,401	82.4	342	81.2	393	80.9	347	82.1	372	81.6	1,454	83.5	258	84.7	315	78.4	196	79.1	186	81.9	955

### Family Domain Risk Factor: Poor Family Management

Question	Response	County 2019										County 2021										County 2023									
		6th		8th		10th		12th		Total		6th		8th		10th		12th		Total		6th		8th		10th		12th		Total	
		%	n	%	n	%	n	%	n	%	n	%	n	%	n	%	n	%	n	%	n	%	n	%	n	%	n	%	n	%	n
When I am not at home, one of my parents/caregivers knows where I am and who I am with.*	NO!	0.5	2	3.0	13	1.7	8	3.2	14	2.1	37	1.1	4	2.9	13	4.3	17	2.1	8	2.7	42	2.4	8	0.5	2	2.3	6	5.4	13	2.4	29
	no	2.3	10	4.8	21	5.1	24	9.3	40	5.4	95	1.1	4	2.0	9	3.8	15	8.1	31	3.7	59	3.3	11	1.8	7	4.3	11	4.6	11	3.3	40
	yes	24.0	105	33.0	144	44.3	208	47.8	206	37.4	663	22.7	83	33.9	150	35.5	140	47.0	179	34.8	552	22.6	75	34.0	132	43.2	111	36.4	87	33.3	405
	YES!	73.2	320	59.3	259	48.8	229	39.7	171	55.2	979	75.1	275	61.2	271	56.3	222	42.8	163	58.8	931	71.7	238	63.7	247	50.2	129	53.6	128	61.0	742
If you skipped school, would you be caught by your parents/caregivers?*	NO!	3.5	15	3.7	16	3.6	17	5.3	23	4.0	71	2.2	8	3.6	16	3.3	13	4.2	16	3.4	53	4.0	13	2.1	8	5.1	13	5.9	14	4.0	48
	no	4.4	19	7.4	32	9.2	43	17.2	74	9.5	168	2.8	10	4.7	21	8.9	35	13.1	50	7.3	116	4.9	16	4.6	18	8.6	22	8.0	19	6.2	75
	yes	22.4	97	28.9	125	39.0	182	36.3	156	31.8	560	18.8	68	33.9	151	30.2	119	39.6	151	30.9	489	23.1	75	28.5	111	39.8	102	29.8	71	29.7	359
	YES!	69.7	302	60.0	260	48.2	225	41.2	177	54.7	964	76.2	275	57.8	257	57.6	227	43.0	164	58.4	923	67.9	220	64.8	252	46.5	119	56.3	134	60.1	725
My parents/caregivers ask if I've gotten my homework done.*	NO!	1.8	8	3.4	15	6.9	32	11.1	48	5.8	103	1.4	5	4.3	19	8.4	33	11.5	44	6.4	101	4.2	14	2.6	10	9.0	23	14.6	35	6.8	82
	no	4.1	18	12.2	53	18.8	88	26.9	116	15.6	275	3.8	14	11.0	49	13.5	53	21.5	82	12.5	198	6.1	20	12.6	49	16.9	43	24.3	58	14.0	170
	yes	27.0	117	37.8	165	40.3	188	36.2	156	35.4	626	22.8	83	31.5	140	35.0	138	43.0	164	33.2	525	25.8	85	34.1	133	43.1	110	30.1	72	32.9	400
	YES!	67.1	291	46.6	203	34.0	159	25.8	111	43.2	764	72.0	262	53.2	236	43.1	170	23.9	91	47.9	759	63.9	211	50.8	198	31.0	79	31.0	74	46.3	562
Would your parents/caregivers know if you did not come home on time?*	NO!	2.8	12	3.5	15	3.0	14	5.1	22	3.6	63	1.9	7	3.2	14	3.5	14	3.2	12	3.0	47	3.0	10	2.3	9	2.3	6	6.3	15	3.3	40
	no	7.1	31	8.4	36	10.5	49	13.9	60	10.0	176	5.5	20	7.4	33	9.1	36	13.4	51	8.8	140	5.8	19	7.0	27	9.0	23	8.4	20	7.4	89
	yes	27.4	119	34.1	147	42.9	201	41.6	180	36.6	647	21.5	78	33.8	150	36.1	143	45.8	174	34.5	545	30.5	100	32.8	127	40.2	103	38.7	92	34.9	422
	YES!	62.7	272	54.1	233	43.6	204	39.5	171	49.8	880	71.0	257	55.6	247	51.3	203	37.6	143	53.7	850	60.7	199	57.9	224	48.4	124	46.6	111	54.4	658

\*The Pennsylvania Youth Survey (PAYS) was significantly revised from 2021 to 2023. Trend data are reported in this report when the data are comparable. When cells include an "n/a" notation, it means the question was either not asked in a previous administration or the question was revised in a way that the 2023 data are not directly comparable. Please note that any question with an \* at the end designates a question and/or response option that was part of this 2023 survey revision. Please see Appendix B of your Profile Report for a description of changes

Family Domain Risk Factor: Poor Family Management (continued)																															
Question	Response	County 2019										County 2021										County 2023									
		6th		8th		10th		12th		Total		6th		8th		10th		12th		Total		6th		8th		10th		12th		Total	
		%	n	%	n	%	n	%	n	%	n	%	n	%	n	%	n	%	n	%	n	%	n	%	n	%	n	%	n	%	n
The rules in my family are clear.	NO!	1.2	5	3.9	17	3.0	14	3.7	16	3.0	52	1.9	7	4.3	19	3.8	15	4.2	16	3.6	57	2.8	9	1.0	4	3.9	10	6.3	15	3.2	38
	no	7.4	32	10.0	43	11.6	54	13.0	56	10.5	185	5.8	21	10.3	46	10.9	43	14.2	54	10.4	164	9.3	30	11.1	43	12.5	32	12.7	30	11.2	135
	yes	34.4	149	39.8	172	48.1	223	45.7	197	42.1	741	31.1	113	41.3	184	39.7	157	51.5	195	41.0	649	34.6	111	42.2	164	40.9	105	38.4	91	39.1	471
	YES!	57.0	247	46.3	200	37.3	173	37.6	162	44.4	782	61.2	222	44.2	197	45.6	180	30.1	114	45.0	713	53.3	171	45.8	178	42.8	110	42.6	101	46.5	560
If you carried a handgun without your parents/caregivers' permission, would you be caught by them?*	NO!	2.6	11	4.2	18	3.2	15	4.0	17	3.5	61	2.8	10	4.5	20	3.1	12	5.5	21	4.0	63	3.1	10	2.1	8	3.5	9	7.6	18	3.7	45
	no	4.0	17	8.4	36	10.3	48	18.6	79	10.3	180	1.4	5	4.7	21	8.5	33	13.1	50	6.9	109	4.3	14	5.2	20	8.6	22	8.0	19	6.2	75
	yes	14.0	60	16.2	70	26.1	122	27.3	116	21.0	368	13.6	49	21.2	94	21.3	83	31.2	119	21.9	345	14.2	46	24.5	95	32.5	83	25.2	60	23.6	284
	YES!	79.5	342	71.2	307	60.4	282	50.1	213	65.3	1,144	82.3	297	69.5	308	67.2	262	50.1	191	67.2	1,058	78.3	253	68.2	264	55.3	141	59.2	141	66.4	799
If you drank some beer, wine, or hard liquor (such as vodka, whiskey, gin, or rum) without your parents/caregivers' permission, would you be caught by them?*	NO!	4.7	20	8.0	34	7.6	35	13.3	57	8.4	146	8.0	29	7.9	35	8.8	34	12.0	46	9.1	144	4.3	13	4.4	17	7.1	18	13.2	31	6.7	79
	no	5.4	23	13.4	57	30.9	142	44.3	190	23.7	412	3.0	11	14.6	65	21.4	83	33.2	127	18.2	286	4.3	13	10.9	42	23.4	59	23.8	56	14.5	170
	yes	15.1	64	25.9	110	30.4	140	24.0	103	24.0	417	15.5	56	25.0	111	26.6	103	28.8	110	24.1	380	17.6	53	23.4	90	31.0	78	29.4	69	24.7	290
	YES!	74.8	318	52.7	224	31.1	143	18.4	79	43.9	764	73.4	265	52.5	233	43.2	167	25.9	99	48.5	764	73.8	222	61.2	235	38.5	97	33.6	79	54.0	633
My family has clear rules about alcohol and drug use.	NO!	2.8	12	2.6	11	3.5	16	4.0	17	3.2	56	4.2	15	4.7	21	4.9	19	6.6	25	5.1	80	2.6	8	2.1	8	3.6	9	3.8	9	2.9	34
	no	5.1	22	7.8	33	11.9	55	15.7	67	10.1	177	4.4	16	7.7	34	10.3	40	17.2	65	9.9	155	4.5	14	6.6	25	12.6	32	10.6	25	8.1	96
	yes	17.1	74	25.9	110	39.5	183	43.0	183	31.5	550	15.0	54	26.4	117	31.3	121	39.1	148	28.0	440	24.3	76	33.2	125	36.0	91	38.7	91	32.5	383
	YES!	75.1	326	63.7	270	45.1	209	37.3	159	55.2	964	76.4	275	61.3	272	53.5	207	37.2	141	57.0	895	68.7	215	58.1	219	47.8	121	46.8	110	56.5	665

Family Domain Protective Factor: Family Attachment																															
Question	Response	County 2019										County 2021										County 2023									
		6th		8th		10th		12th		Total		6th		8th		10th		12th		Total		6th		8th		10th		12th		Total	
		%	n	%	n	%	n	%	n	%	n	%	n	%	n	%	n	%	n	%	n	%	n	%	n	%	n	%	n	%	n
Do you feel very close to your parents/caregivers?*	NO!	n/a	n/a	n/a	n/a	n/a	n/a	n/a	n/a	n/a	n/a	n/a	n/a	n/a	n/a	n/a	n/a	n/a	n/a	n/a	n/a	2.4	8	2.3	9	4.3	11	9.2	22	4.1	50
	no	n/a	n/a	n/a	n/a	n/a	n/a	n/a	n/a	n/a	n/a	n/a	n/a	n/a	n/a	n/a	n/a	n/a	n/a	n/a	n/a	5.1	17	6.7	26	13.7	35	14.6	35	9.3	113
	yes	n/a	n/a	n/a	n/a	n/a	n/a	n/a	n/a	n/a	n/a	n/a	n/a	n/a	n/a	n/a	n/a	n/a	n/a	n/a	n/a	22.5	75	35.6	139	37.5	96	31.7	76	31.6	386
	YES!	n/a	n/a	n/a	n/a	n/a	n/a	n/a	n/a	n/a	n/a	n/a	n/a	n/a	n/a	n/a	n/a	n/a	n/a	n/a	n/a	70.1	234	55.4	216	44.5	114	44.6	107	55.0	671
Do you share your thoughts and feelings with your parents/caregivers?*	NO!	n/a	n/a	n/a	n/a	n/a	n/a	n/a	n/a	n/a	n/a	n/a	n/a	n/a	n/a	n/a	n/a	n/a	n/a	n/a	n/a	9.4	31	8.2	32	9.4	24	11.7	28	9.5	115
	no	n/a	n/a	n/a	n/a	n/a	n/a	n/a	n/a	n/a	n/a	n/a	n/a	n/a	n/a	n/a	n/a	n/a	n/a	n/a	n/a	17.0	56	22.0	86	26.6	68	22.6	54	21.7	264
	yes	n/a	n/a	n/a	n/a	n/a	n/a	n/a	n/a	n/a	n/a	n/a	n/a	n/a	n/a	n/a	n/a	n/a	n/a	n/a	n/a	37.7	124	39.1	153	35.9	92	39.7	95	38.2	464
	YES!	n/a	n/a	n/a	n/a	n/a	n/a	n/a	n/a	n/a	n/a	n/a	n/a	n/a	n/a	n/a	n/a	n/a	n/a	n/a	n/a	35.9	118	30.7	120	28.1	72	25.9	62	30.6	372

\*The Pennsylvania Youth Survey (PAYS) was significantly revised from 2021 to 2023. Trend data are reported in this report when the data are comparable. When cells include an "n/a" notation, it means the question was either not asked in a previous administration or the question was revised in a way that the 2023 data are not directly comparable. Please note that any question with an \* at the end designates a question and/or response option that was part of this 2023 survey revision. Please see Appendix B of your Profile Report for a description of changes

### Family Domain Protective Factor: Opportunities for Prosocial Involvement

Question	Response	County 2019										County 2021										County 2023									
		6th		8th		10th		12th		Total		6th		8th		10th		12th		Total		6th		8th		10th		12th		Total	
		%	n	%	n	%	n	%	n	%	n	%	n	%	n	%	n	%	n	%	n	%	n	%	n	%	n	%	n	%	n
My parents/caregivers ask me what I think before most family decisions affecting me are made*	NO!	11.4	46	11.1	46	11.8	55	10.9	47	11.3	194	10.4	38	13.5	61	12.0	47	16.4	63	13.1	209	14.4	47	9.6	37	10.4	27	18.9	45	12.9	156
	no	20.5	83	25.7	106	28.2	131	23.5	101	24.6	421	23.9	87	27.4	124	21.5	84	25.6	98	24.7	393	18.1	59	22.5	87	26.6	69	21.8	52	22.1	267
	yes	42.7	173	43.6	180	43.7	203	46.0	198	44.0	754	35.2	128	37.6	170	43.7	171	44.6	171	40.3	640	43.3	141	42.6	165	38.2	99	34.9	83	40.3	488
	YES!	25.4	103	19.6	81	16.3	76	19.5	84	20.1	344	30.5	111	21.5	97	22.8	89	13.3	51	21.9	348	24.2	79	25.3	98	24.7	64	24.4	58	24.7	299
If I had a personal problem, I could ask my parents/caregivers for help*	NO!	4.8	21	7.4	32	6.6	31	7.1	31	6.5	115	5.1	19	7.6	34	9.4	37	12.1	46	8.5	136	10.9	36	6.9	27	8.1	21	12.6	30	9.4	114
	no	6.6	29	11.3	49	11.9	56	11.3	49	10.3	183	8.4	31	15.2	68	10.9	43	16.3	62	12.8	204	9.1	30	8.5	33	15.1	39	13.8	33	11.1	135
	yes	32.4	143	36.3	157	42.3	199	46.0	200	39.3	699	30.8	114	40.4	181	43.3	170	40.4	154	38.9	619	29.4	97	40.3	157	43.0	111	36.8	88	37.2	453
	YES!	56.3	249	45.0	195	39.1	184	35.6	155	44.0	783	55.7	206	36.8	165	36.4	143	31.2	119	39.8	633	50.6	167	44.4	173	33.7	87	36.8	88	42.3	515
My parents/caregivers give me lots of chances to do fun things with them*	NO!	3.7	16	6.1	26	5.3	25	7.6	33	5.7	100	5.2	19	6.3	28	6.4	25	11.8	45	7.4	117	5.8	19	4.1	16	6.6	17	11.0	26	6.4	78
	no	10.1	44	12.4	53	16.9	79	19.6	85	14.8	261	9.8	36	14.3	64	15.4	60	18.4	70	14.5	230	7.9	26	10.3	40	14.0	36	17.3	41	11.8	143
	yes	38.9	170	42.6	182	45.5	213	43.4	188	42.7	753	32.2	118	39.1	175	40.1	156	43.4	165	38.8	614	32.2	106	39.8	155	46.7	120	35.9	85	38.4	466
	YES!	47.4	207	38.9	166	32.3	151	29.3	127	36.9	651	52.9	194	40.3	180	38.0	148	26.3	100	39.3	622	54.1	178	45.8	178	32.7	84	35.9	85	43.3	525

### Family Domain Protective Factor: Rewards for Prosocial Involvement

Question	Response	County 2019										County 2021										County 2023									
		6th		8th		10th		12th		Total		6th		8th		10th		12th		Total		6th		8th		10th		12th		Total	
		%	n	%	n	%	n	%	n	%	n	%	n	%	n	%	n	%	n	%	n	%	n	%	n	%	n	%	n	%	n
My parents/caregivers notice when I am doing a good job and let me know about it*	Never or Almost Never	5.9	26	10.1	44	9.0	42	12.2	53	9.3	165	6.4	24	7.3	33	13.1	52	13.5	52	10.0	161	7.5	25	6.1	24	10.4	27	13.8	33	8.9	109
	Sometimes	21.0	92	26.0	113	30.9	144	25.7	112	26.0	461	17.6	66	32.5	147	30.8	122	37.6	145	29.8	480	23.1	77	27.6	108	31.9	83	31.4	75	28.0	343
	Often	33.3	146	29.3	127	28.5	133	31.7	138	30.7	544	31.7	119	32.9	149	28.0	111	26.4	102	29.9	481	30.8	103	29.8	117	28.8	75	25.1	60	29.0	355
	All the time	39.7	174	34.6	150	31.5	147	30.3	132	34.0	603	44.3	166	27.4	124	28.0	111	22.5	87	30.3	488	38.6	129	36.5	143	28.8	75	29.7	71	34.1	418
How often do your parents/caregivers tell you they're proud of you for something you've done?*	Never or Almost Never	5.5	24	12.9	56	9.9	46	14.5	63	10.7	189	8.0	30	10.6	48	17.3	68	14.3	55	12.5	201	8.4	28	9.7	38	13.8	36	19.2	46	12.1	148
	Sometimes	18.5	81	26.1	113	30.5	142	24.4	106	25.0	442	16.3	61	28.5	129	28.2	111	36.1	139	27.4	440	23.4	78	23.2	91	31.9	83	28.9	69	26.2	321
	Often	34.8	152	28.4	123	28.1	131	29.4	128	30.2	534	29.7	111	33.2	150	28.2	111	26.5	102	29.5	474	29.0	97	30.4	119	32.3	84	27.6	66	29.9	366
	All the time	41.2	180	32.6	141	31.5	147	31.7	138	34.2	606	46.0	172	27.7	125	26.4	104	23.1	89	30.5	490	39.2	131	36.7	144	21.9	57	24.3	58	31.8	390
Do you enjoy spending time with your parents/caregivers?*	NO!	n/a	n/a	n/a	n/a	n/a	n/a	n/a	n/a	n/a	n/a	n/a	n/a	n/a	n/a	n/a	n/a	n/a	n/a	n/a	n/a	2.4	8	1.6	6	3.1	8	8.8	21	3.5	43
	no	n/a	n/a	n/a	n/a	n/a	n/a	n/a	n/a	n/a	n/a	n/a	n/a	n/a	n/a	n/a	n/a	n/a	n/a	n/a	n/a	2.1	7	5.7	22	7.8	20	5.4	13	5.1	62
	yes	n/a	n/a	n/a	n/a	n/a	n/a	n/a	n/a	n/a	n/a	n/a	n/a	n/a	n/a	n/a	n/a	n/a	n/a	n/a	n/a	28.2	93	38.5	149	50.4	129	44.6	107	39.4	478
	YES!	n/a	n/a	n/a	n/a	n/a	n/a	n/a	n/a	n/a	n/a	n/a	n/a	n/a	n/a	n/a	n/a	n/a	n/a	n/a	n/a	67.3	222	54.3	210	38.7	99	41.3	99	51.9	630

\*The Pennsylvania Youth Survey (PAYS) was significantly revised from 2021 to 2023. Trend data are reported in this report when the data are comparable. When cells include an "n/a" notation, it means the question was either not asked in a previous administration or the question was revised in a way that the 2023 data are not directly comparable. Please note that any question with an \* at the end designates a question and/or response option that was part of this 2023 survey revision. Please see Appendix B of your Profile Report for a description of changes

## Peer-Individual Risk Factor: Attitudes Favorable Toward Antisocial Behavior and Drug Use

Question	Response	County 2019										County 2021										County 2023									
		6th		8th		10th		12th		Total		6th		8th		10th		12th		Total		6th		8th		10th		12th		Total	
		%	n	%	n	%	n	%	n	%	n	%	n	%	n	%	n	%	n	%	n	%	n	%	n	%	n	%	n	%	n
How wrong do you think it is for someone your age to:																															
Stay away from school all day when their parents/caregivers think they are at school?*	Not Wrong at All	3.9	17	9.2	40	5.8	27	6.5	28	6.3	112	2.8	10	3.8	17	6.1	23	8.1	30	5.1	80	6.1	19	3.7	14	8.2	21	9.4	22	6.5	76
	A Little Bit Wrong	4.6	20	14.3	62	19.9	92	29.0	126	17.0	300	5.9	21	16.0	72	22.2	84	23.5	87	17.0	264	8.3	26	12.3	46	21.1	54	23.9	56	15.5	182
	Wrong	24.2	105	30.9	134	41.7	193	37.3	162	33.7	594	24.6	88	35.6	160	34.4	130	35.1	130	32.7	508	27.2	85	36.3	136	34.0	87	32.1	75	32.5	383
	Very wrong	67.2	291	45.6	198	32.6	151	27.2	118	43.0	758	66.7	238	44.7	201	37.3	141	33.2	123	45.2	703	58.3	182	47.7	179	36.7	94	34.6	81	45.5	536
How wrong do you think it is for someone your age to:																															
Take a handgun to school?	Not Wrong at All	3.0	13	4.6	20	2.1	10	2.5	11	3.1	54	2.8	10	3.1	14	2.1	8	2.7	10	2.7	42	4.8	15	2.4	9	4.3	11	5.5	13	4.1	48
	A Little Bit Wrong	0.9	4	1.2	5	0.6	3	1.6	7	1.1	19	0.6	2	0.7	3	0.8	3	1.6	6	0.9	14	0.6	2	0.8	3	0.8	2	1.7	4	0.9	11
	Wrong	2.8	12	6.9	30	5.4	25	7.3	32	5.6	99	4.7	17	6.2	28	6.1	23	6.0	22	5.8	90	4.5	14	3.4	13	4.3	11	3.4	8	3.9	46
	Very wrong	93.3	402	87.3	379	91.8	428	88.6	387	90.3	1,596	91.9	330	90.0	404	91.0	345	89.7	330	90.6	1,409	90.0	279	93.4	352	90.7	233	89.4	210	91.1	1,074
How wrong do you think it is for someone your age to:																															
Steal anything worth more than \$5?	Not Wrong at All	3.3	14	5.6	24	5.4	25	3.2	14	4.4	77	3.4	12	3.8	17	5.6	21	5.7	21	4.6	71	5.8	18	4.8	18	7.8	20	8.9	21	6.5	77
	A Little Bit Wrong	4.9	21	14.1	61	13.4	62	18.4	80	12.7	224	7.6	27	15.2	68	18.3	69	18.6	69	15.0	233	8.1	25	15.6	59	20.4	52	20.0	47	15.5	183
	Wrong	29.3	126	30.8	133	37.1	172	34.8	151	33.1	582	29.1	104	35.5	159	36.2	137	38.3	142	34.9	542	31.0	96	32.3	122	33.7	86	28.9	68	31.6	372
	Very wrong	62.6	269	49.5	214	44.1	204	43.5	189	49.8	876	59.9	214	45.5	204	39.9	151	37.5	139	45.6	708	55.2	171	47.4	179	38.0	97	42.1	99	46.3	546
How wrong do you think it is for someone your age to:																															
Pick a fight with someone?	Not Wrong at All	4.0	17	10.1	44	9.5	44	5.7	25	7.4	130	3.1	11	4.5	20	7.9	30	5.7	21	5.3	82	6.2	19	6.7	25	10.9	28	9.7	23	8.1	95
	A Little Bit Wrong	9.8	42	23.5	102	25.9	120	29.2	127	22.2	391	14.3	51	25.8	114	28.6	108	27.9	103	24.3	376	16.9	52	24.0	90	27.0	69	23.6	56	22.7	267
	Wrong	30.9	133	33.6	146	39.3	182	37.7	164	35.5	625	30.8	110	34.8	154	35.4	134	36.0	133	34.3	531	33.6	103	30.9	116	30.5	78	32.1	76	31.7	373
	Very wrong	55.3	238	32.7	142	25.3	117	27.4	119	35.0	616	51.8	185	34.8	154	28.0	106	30.4	112	36.0	557	43.3	133	38.4	144	31.6	81	34.6	82	37.4	440
How wrong do you think it is for someone your age to:																															
Attack someone with the idea of seriously hurting them?	Not Wrong at All	3.7	16	6.2	27	3.2	15	2.3	10	3.8	68	3.1	11	3.3	15	3.4	13	3.8	14	3.4	53	6.1	19	2.9	11	5.9	15	6.8	16	5.2	61
	A Little Bit Wrong	0.9	4	4.6	20	8.6	40	8.5	37	5.7	101	2.8	10	6.3	28	6.3	24	5.1	19	5.2	81	2.3	7	6.1	23	8.2	21	6.8	16	5.7	67
	Wrong	11.2	48	17.5	76	24.7	115	24.5	107	19.6	346	13.4	48	19.2	86	21.4	81	27.3	101	20.3	316	14.8	46	21.9	82	27.0	69	23.7	56	21.5	253
	Very wrong	84.2	362	71.7	312	63.5	296	64.8	283	70.9	1,253	80.7	289	71.2	319	68.9	261	63.8	236	71.1	1,105	76.8	239	69.1	259	59.0	151	62.7	148	67.7	797
How wrong do you think it is for someone your age to:																															
Drink beer, wine, or hard liquor (for example, vodka, whiskey, gin, or rum) regularly?	Not Wrong at All	3.5	15	7.8	34	6.7	31	8.1	35	6.5	115	3.1	11	3.6	16	7.9	30	10.2	38	6.1	95	4.8	15	6.1	23	6.7	17	14.8	35	7.6	90
	A Little Bit Wrong	2.3	10	10.6	46	21.2	99	25.9	112	15.1	267	1.7	6	9.2	41	17.2	65	21.0	78	12.2	190	3.5	11	7.4	28	20.0	51	21.5	51	11.9	141
	Wrong	14.2	61	18.2	79	30.7	143	32.3	140	24.0	423	10.1	36	23.0	103	28.0	106	31.0	115	23.2	360	11.3	35	18.0	68	28.2	72	22.8	54	19.4	229
	Very wrong	80.0	343	63.4	276	41.4	193	33.7	146	54.3	958	85.2	304	64.3	288	46.8	177	37.7	140	58.5	909	80.4	250	68.5	259	45.1	115	40.9	97	61.0	721

**Peer-Individual Risk Factor: Attitudes Favorable Toward Antisocial Behavior and Drug Use (continued)**

Question	Response	County 2019										County 2021										County 2023									
		6th		8th		10th		12th		Total		6th		8th		10th		12th		Total		6th		8th		10th		12th		Total	
		%	n	%	n	%	n	%	n	%	n	%	n	%	n	%	n	%	n	%	n	%	n	%	n	%	n	%	n	%	n
How wrong do you think it is for someone your age to:																															
Smoke cigarettes?	Not Wrong at All	3.0	13	7.1	31	5.1	24	8.0	35	5.8	103	2.5	9	3.1	14	5.0	19	8.9	33	4.8	75	5.5	17	3.5	13	6.3	16	11.9	28	6.3	74
	A Little Bit Wrong	1.9	8	7.6	33	12.0	56	12.4	54	8.5	151	0.8	3	7.0	31	9.8	37	13.5	50	7.8	121	1.6	5	5.1	19	11.4	29	16.9	40	7.9	93
	Wrong	13.3	57	14.7	64	27.6	129	31.5	137	21.9	387	12.3	44	21.5	96	25.7	97	30.3	112	22.5	349	7.4	23	14.2	53	25.1	64	23.7	56	16.7	196
	Very wrong	81.8	351	70.6	308	55.3	259	48.0	209	63.7	1,127	84.3	301	68.4	305	59.4	224	47.3	175	64.8	1,005	85.5	265	77.3	289	57.3	146	47.5	112	69.1	812
How wrong do you think it is for someone your age to:																															
Use LSD, cocaine or crack, amphetamines or another illegal drug?	Not Wrong at All	2.8	12	5.1	22	3.4	16	3.7	16	3.7	66	2.5	9	2.7	12	3.5	13	5.1	19	3.4	53	5.2	16	2.9	11	4.3	11	9.3	22	5.1	60
	A Little Bit Wrong	0.0	0	4.1	18	5.2	24	12.0	52	5.3	94	0.0	0	2.5	11	4.5	17	7.6	28	3.6	56	0.6	2	1.1	4	5.1	13	4.6	11	2.5	30
	Wrong	4.5	19	8.0	35	15.5	72	17.9	78	11.6	204	5.6	20	10.8	48	13.8	52	18.4	68	12.1	188	5.5	17	8.8	33	17.3	44	14.3	34	10.9	128
	Very wrong	92.7	395	82.8	360	75.9	353	66.4	289	79.3	1,397	91.9	329	84.1	375	78.2	294	68.9	255	80.8	1,253	88.7	275	87.2	328	73.2	186	71.7	170	81.5	959
How wrong do you think it is for someone your age to:																															
Use marijuana?	Not Wrong at All	3.0	13	9.0	39	23.6	110	32.8	143	17.3	305	2.8	10	4.9	22	15.3	58	23.8	88	11.5	178	5.5	17	3.7	14	10.6	27	20.4	48	9.0	106
	A Little Bit Wrong	1.2	5	11.5	50	21.0	98	25.2	110	14.9	263	1.1	4	8.1	36	17.2	65	25.2	93	12.8	198	1.3	4	6.3	24	22.4	57	22.6	53	11.7	138
	Wrong	8.0	34	14.3	62	18.9	88	16.3	71	14.5	255	8.2	29	16.6	74	21.2	80	21.4	79	16.9	262	6.1	19	11.1	42	18.1	46	16.2	38	12.3	145
	Very wrong	87.8	375	65.3	284	36.5	170	25.7	112	53.3	941	87.9	312	70.4	314	46.3	175	29.5	109	58.8	910	87.1	270	78.8	298	48.8	124	40.9	96	66.9	788
How wrong do you think it is for someone your age to:																															
Use prescription drugs not prescribed to them?*	Not Wrong at All	n/a	n/a	n/a	n/a	n/a	n/a	n/a	n/a	n/a	n/a	n/a	n/a	n/a	n/a	n/a	n/a	n/a	n/a	n/a	n/a	5.2	16	2.9	11	5.1	13	8.5	20	5.1	60
	A Little Bit Wrong	n/a	n/a	n/a	n/a	n/a	n/a	n/a	n/a	n/a	n/a	n/a	n/a	n/a	n/a	n/a	n/a	n/a	n/a	n/a	n/a	2.3	7	1.9	7	7.5	19	5.1	12	3.8	45
	Wrong	n/a	n/a	n/a	n/a	n/a	n/a	n/a	n/a	n/a	n/a	n/a	n/a	n/a	n/a	n/a	n/a	n/a	n/a	n/a	n/a	10.1	31	14.7	55	18.6	47	16.9	40	14.8	173
	Very wrong	n/a	n/a	n/a	n/a	n/a	n/a	n/a	n/a	n/a	n/a	n/a	n/a	n/a	n/a	n/a	n/a	n/a	n/a	n/a	n/a	82.4	252	80.5	302	68.8	174	69.5	164	76.2	892

\*The Pennsylvania Youth Survey (PAYS) was significantly revised from 2021 to 2023. Trend data are reported in this report when the data are comparable. When cells include an "n/a" notation, it means the question was either not asked in a previous administration or the question was revised in a way that the 2023 data are not directly comparable. Please note that any question with an \* at the end designates a question and/or response option that was part of this 2023 survey revision. Please see Appendix B of your Profile Report for a description of changes

## Peer-Individual: Friend/Peer Perception of Use

Question	Response	County 2019										County 2021										County 2023									
		6th		8th		10th		12th		Total		6th		8th		10th		12th		Total		6th		8th		10th		12th		Total	
		%	n	%	n	%	n	%	n	%	n	%	n	%	n	%	n	%	n	%	n	%	n	%	n	%	n	%	n	%	n
How do you feel about someone your age:																															
Having one or two drinks of an alcoholic beverage (beer, wine, hard liquor) nearly every day?	Strongly disapprove	77.4	360	56.0	248	36.4	172	32.5	147	50.6	927	80.8	336	63.5	305	45.5	192	40.6	168	57.8	1,001	84.1	322	76.9	323	59.1	169	51.1	134	70.2	948
	Somewhat disapprove	8.4	39	13.3	59	22.6	107	23.5	106	17.0	311	8.7	36	18.5	89	19.4	82	21.5	89	17.1	296	6.8	26	9.5	40	13.3	38	15.6	41	10.7	145
	Neither approve or disapprove	4.9	23	17.2	76	29.0	137	30.1	136	20.3	372	2.4	10	13.1	63	25.8	109	26.6	110	16.9	292	4.2	16	8.3	35	22.4	64	24.4	64	13.2	179
	Approve	1.5	7	2.7	12	3.0	14	5.8	26	3.2	59	1.2	5	0.6	3	3.3	14	6.3	26	2.8	48	0.3	1	0.5	2	2.1	6	4.6	12	1.6	21
	Don't know/ Can't say	7.7	36	10.8	48	9.1	43	8.2	37	8.9	164	7.0	29	4.2	20	5.9	25	5.1	21	5.5	95	4.7	18	4.8	20	3.1	9	4.2	11	4.3	58
How do you feel about someone your age:																															
Using marijuana once a month or more?	Strongly disapprove	85.4	398	65.0	288	33.1	157	23.0	104	51.6	947	87.3	356	71.8	344	49.0	205	34.6	143	61.0	1,048	88.8	326	79.6	327	52.1	148	39.0	103	68.2	904
	Somewhat disapprove	6.7	31	9.5	42	15.8	75	12.6	57	11.2	205	4.9	20	11.5	55	15.8	66	13.6	56	11.5	197	4.1	15	7.3	30	12.7	36	13.6	36	8.8	117
	Neither approve or disapprove	3.6	17	13.5	60	30.0	142	32.7	148	20.0	367	2.9	12	11.1	53	21.8	91	30.3	125	16.4	281	2.2	8	7.5	31	23.9	68	29.9	79	14.0	186
	Approve	0.2	1	6.1	27	14.6	69	24.8	112	11.4	209	0.2	1	2.3	11	10.0	42	18.2	75	7.5	129	0.3	1	1.9	8	7.7	22	13.6	36	5.1	67
	Don't know/ Can't say	4.1	19	5.9	26	6.5	31	6.9	31	5.8	107	4.7	19	3.3	16	3.3	14	3.4	14	3.7	63	4.6	17	3.6	15	3.5	10	3.8	10	3.9	52
How wrong do your friends feel it would be for YOU to:																															
Have one or two drinks of an alcoholic beverage nearly every day?	Not Wrong at All	6.6	28	9.7	41	13.2	61	16.9	72	11.6	202	5.7	21	9.8	43	15.4	57	18.6	69	12.3	190	10.8	34	6.5	25	9.3	23	12.9	30	9.5	112
	A Little Bit Wrong	4.7	20	13.0	55	27.3	126	29.7	127	18.9	328	3.2	12	11.4	50	21.9	81	27.5	102	15.8	245	3.8	12	10.4	40	20.6	51	21.0	49	12.9	152
	Wrong	17.5	74	25.9	110	30.7	142	30.2	129	26.2	455	15.7	58	25.2	111	23.2	86	21.6	80	21.6	335	16.5	52	20.1	77	31.2	77	27.5	64	22.9	270
	Very wrong	71.2	301	51.4	218	28.8	133	23.2	99	43.3	751	75.4	279	53.6	236	39.5	146	32.3	120	50.4	781	69.0	218	63.0	242	38.9	96	38.6	90	54.7	646
How wrong do your friends feel it would be for YOU to:																															
Use tobacco?	Not Wrong at All	5.9	25	8.5	36	11.9	55	20.1	86	11.6	202	5.2	19	9.6	42	15.4	57	18.4	68	12.0	186	10.2	32	7.3	28	8.1	20	17.0	39	10.2	119
	A Little Bit Wrong	1.9	8	6.6	28	18.0	83	23.2	99	12.6	218	1.9	7	6.2	27	14.8	55	19.0	70	10.3	159	1.6	5	5.0	19	17.9	44	16.2	37	9.0	105
	Wrong	15.3	65	24.8	105	27.3	126	30.2	129	24.5	425	11.7	43	21.1	92	22.4	83	26.8	99	20.5	317	13.7	43	15.1	58	28.5	70	24.9	57	19.5	228
	Very wrong	76.9	326	60.1	255	42.9	198	26.5	113	51.4	892	81.3	299	63.2	276	47.4	176	35.8	132	57.2	883	74.5	234	72.6	278	45.5	112	41.9	96	61.4	720
How wrong do your friends feel it would be for YOU to:																															
Use marijuana?	Not Wrong at All	5.7	24	10.0	42	25.8	119	41.9	179	21.1	364	5.2	19	10.6	46	21.8	81	34.7	129	17.9	275	10.2	32	6.8	26	16.6	41	27.7	64	13.9	163
	A Little Bit Wrong	1.9	8	10.5	44	22.7	105	21.5	92	14.4	249	1.1	4	7.8	34	15.4	57	20.4	76	11.1	171	1.0	3	7.6	29	19.4	48	20.8	48	10.9	128
	Wrong	10.5	44	18.2	76	19.0	88	17.1	73	16.3	281	10.7	39	19.8	86	17.5	65	17.2	64	16.5	254	10.2	32	13.6	52	22.7	56	17.3	40	15.3	180
	Very wrong	81.9	344	61.2	256	32.5	150	19.4	83	48.2	833	82.9	301	61.8	268	45.3	168	27.7	103	54.5	840	78.7	247	72.1	276	41.3	102	34.2	79	59.9	704
How wrong do your friends feel it would be for YOU to:																															
Use prescription drugs not prescribed to you?	Not Wrong at All	5.6	24	7.1	30	4.8	22	6.3	27	5.9	103	5.8	21	7.8	34	9.2	34	8.1	30	7.8	119	10.9	34	5.5	21	7.3	18	6.5	15	7.5	88
	A Little Bit Wrong	3.5	15	5.0	21	8.7	40	13.8	59	7.8	135	1.1	4	5.1	22	8.4	31	9.5	35	6.0	92	2.9	9	5.0	19	10.5	26	7.4	17	6.1	71
	Wrong	12.2	52	17.7	75	23.7	109	23.5	100	19.4	336	12.8	46	22.6	98	17.6	65	26.2	97	20.0	306	11.2	35	14.7	56	22.6	56	20.0	46	16.5	193
	Very wrong	78.6	334	70.2	297	62.8	289	56.3	240	66.9	1,160	80.3	289	64.5	280	64.8	239	56.2	208	66.3	1,016	75.1	235	74.7	284	59.7	148	66.1	152	69.9	819

**Peer-Individual: Friend/Peer Perception of Use (continued)**

Question	Response	County 2019										County 2021										County 2023																		
		6th		8th		10th		12th		Total		6th		8th		10th		12th		Total		6th		8th		10th		12th		Total										
		%	n	%	n	%	n	%	n	%	n	%	n	%	n	%	n	%	n	%	n	%	n	%	n	%	n	%	n	%	n									
How wrong do your friends feel it would be for YOU to:																																								
Use an electronic vapor product such as vape or e-cigarette?*	Not Wrong at All	n/a	n/a	n/a	n/a	n/a	n/a	n/a	n/a	n/a	n/a	n/a	n/a	n/a	n/a	n/a	n/a	n/a	n/a	n/a	n/a	n/a	n/a	n/a	n/a	n/a	n/a	n/a	n/a	n/a	10.6	33	7.1	27	15.4	38	28.4	66	14.0	164
	A Little Bit Wrong	n/a	n/a	n/a	n/a	n/a	n/a	n/a	n/a	n/a	n/a	n/a	n/a	n/a	n/a	n/a	n/a	n/a	n/a	n/a	n/a	n/a	n/a	n/a	n/a	n/a	n/a	n/a	n/a	4.5	14	8.7	33	21.1	52	18.1	42	12.0	141	
	Wrong	n/a	n/a	n/a	n/a	n/a	n/a	n/a	n/a	n/a	n/a	n/a	n/a	n/a	n/a	n/a	n/a	n/a	n/a	n/a	n/a	n/a	n/a	n/a	n/a	n/a	n/a	n/a	n/a	10.6	33	15.8	60	21.5	53	15.9	37	15.6	183	
	Very wrong	n/a	n/a	n/a	n/a	n/a	n/a	n/a	n/a	n/a	n/a	n/a	n/a	n/a	n/a	n/a	n/a	n/a	n/a	n/a	n/a	n/a	n/a	n/a	n/a	n/a	n/a	n/a	n/a	74.4	232	68.4	260	42.1	104	37.5	87	58.3	683	

**Peer-Individual Risk Factor: Perceived Risk of Drug Use**

Question	Response	County 2019										County 2021										County 2023									
		6th		8th		10th		12th		Total		6th		8th		10th		12th		Total		6th		8th		10th		12th		Total	
		%	n	%	n	%	n	%	n	%	n	%	n	%	n	%	n	%	n	%	n	%	n	%	n	%	n	%	n	%	n
How much do you think people risk harming themselves if they:																															
Take one or two drinks of an alcoholic beverage (beer, wine, hard liquor) nearly every day?	No risk	11.4	49	13.0	56	13.5	63	12.9	56	12.7	224	15.8	56	11.8	53	13.6	51	16.5	61	14.3	221	12.3	38	5.8	22	6.0	15	8.5	20	8.1	95
	Slight risk	17.0	73	21.4	92	28.2	131	27.3	118	23.6	414	20.6	73	19.9	89	27.7	104	25.7	95	23.3	361	14.2	44	14.3	54	17.1	43	14.1	33	14.8	174
	Moderate risk	30.5	131	32.3	139	37.2	173	36.0	156	34.1	599	28.5	101	31.7	142	30.1	113	31.9	118	30.6	474	33.7	104	28.3	107	28.6	72	32.1	75	30.5	358
	Great risk	41.0	176	33.3	143	21.1	98	23.8	103	29.6	520	35.2	125	36.6	164	28.7	108	25.9	96	31.8	493	39.8	123	51.6	195	48.4	122	45.3	106	46.5	546
How much do you think people risk harming themselves if they:																															
Take five or more drinks of an alcoholic beverage (beer, wine, hard liquor) once or twice a week?	No risk	10.7	46	11.0	47	11.5	53	10.9	47	11.1	193	13.3	47	9.6	43	9.8	37	14.9	55	11.8	182	11.5	35	3.7	14	5.6	14	6.8	16	6.8	79
	Slight risk	12.4	53	18.8	80	25.8	119	24.2	104	20.4	356	14.2	50	15.0	67	20.2	76	18.6	69	16.9	262	9.8	30	5.3	20	12.3	31	11.5	27	9.2	108
	Moderate risk	34.0	146	31.2	133	38.4	177	37.9	163	35.5	619	29.5	104	32.0	143	36.2	136	37.3	138	33.7	521	25.6	78	30.3	114	27.0	68	32.8	77	28.9	337
	Great risk	42.9	184	39.0	166	24.3	112	27.0	116	33.1	578	43.1	152	43.4	194	33.8	127	29.2	108	37.6	581	53.1	162	60.6	228	55.2	139	48.9	115	55.1	644
How much do you think people risk harming themselves if they:																															
Smoke one or more packs of cigarettes per day?	No risk	11.0	47	10.1	43	9.9	46	9.6	41	10.1	177	14.1	50	8.5	38	8.9	33	11.1	41	10.5	162	11.4	35	4.0	15	4.8	12	6.1	14	6.5	76
	Slight risk	4.9	21	9.8	42	12.9	60	12.4	53	10.1	176	7.3	26	9.7	43	11.6	43	11.1	41	9.9	153	3.9	12	1.6	6	7.5	19	4.8	11	4.1	48
	Moderate risk	17.2	74	19.9	85	25.6	119	21.9	94	21.3	372	16.9	60	16.6	74	17.5	65	26.2	97	19.2	296	10.7	33	13.6	51	13.1	33	18.6	43	13.7	160
	Great risk	66.9	287	60.2	257	51.6	240	56.2	241	58.6	1,025	61.7	219	65.2	290	62.0	230	51.6	191	60.4	930	73.9	227	80.9	304	74.6	188	70.6	163	75.6	882
How much do you think people risk harming themselves if they:																															
Try marijuana once or twice?	No risk	12.4	53	22.2	94	44.9	209	57.1	246	34.5	602	17.3	61	22.1	99	36.9	139	51.8	191	31.7	490	13.8	42	14.1	53	27.2	69	36.2	85	21.3	249
	Slight risk	25.8	110	30.9	131	26.0	121	24.8	107	26.9	469	20.7	73	26.2	117	30.0	113	22.5	83	25.0	386	17.1	52	24.2	91	28.3	72	24.3	57	23.3	272
	Moderate risk	28.2	120	20.8	88	15.9	74	9.5	41	18.5	323	26.3	93	23.0	103	14.6	55	11.7	43	19.0	294	27.6	84	19.9	75	16.9	43	16.6	39	20.6	241
	Great risk	33.6	143	26.2	111	13.1	61	8.6	37	20.2	352	35.7	126	28.6	128	18.6	70	14.1	52	24.3	376	41.4	126	41.8	157	27.6	70	23.0	54	34.8	407

\*The Pennsylvania Youth Survey (PAYS) was significantly revised from 2021 to 2023. Trend data are reported in this report when the data are comparable. When cells include an "n/a" notation, it means the question was either not asked in a previous administration or the question was revised in a way that the 2023 data are not directly comparable. Please note that any question with an \* at the end designates a question and/or response option that was part of this 2023 survey revision. Please see Appendix B of your Profile Report for a description of changes

**Peer-Individual Risk Factor: Perceived Risk of Drug Use (continued)**

Question	Response	County 2019										County 2021										County 2023									
		6th		8th		10th		12th		Total		6th		8th		10th		12th		Total		6th		8th		10th		12th		Total	
		%	n	%	n	%	n	%	n	%	n	%	n	%	n	%	n	%	n	%	n	%	n	%	n	%	n	%	n	%	n
How much do you think people risk harming themselves if they:																															
Use marijuana once or twice a week?	No risk	10.8	46	13.0	55	28.4	132	37.7	162	22.6	395	14.9	52	13.4	60	22.0	82	33.2	122	20.6	316	12.6	38	6.1	23	15.1	38	25.4	60	13.6	159
	Slight risk	9.8	42	17.8	75	27.5	128	29.3	126	21.3	371	8.0	28	16.1	72	24.9	93	29.4	108	19.6	301	7.0	21	11.7	44	19.0	48	21.2	50	14.0	163
	Moderate risk	32.8	140	32.7	138	24.5	114	20.9	90	27.6	482	27.5	96	29.9	134	24.4	91	19.1	70	25.4	391	19.3	58	28.5	107	25.4	64	21.6	51	24.0	280
	Great risk	46.6	199	36.5	154	19.6	91	12.1	52	28.4	496	49.6	173	40.6	182	28.7	107	18.3	67	34.4	529	61.1	184	53.7	202	40.5	102	31.8	75	48.3	563
How much do you think people risk harming themselves if they:																															
Use marijuana regularly?	No risk	11.2	48	12.4	52	20.8	97	28.4	122	18.3	319	14.5	50	10.1	45	15.5	58	23.1	85	15.5	238	12.6	38	5.6	21	9.0	23	14.8	35	10.0	117
	Slight risk	2.3	10	6.7	28	16.7	78	21.6	93	12.0	209	2.9	10	6.1	27	15.5	58	21.5	79	11.4	174	3.0	9	3.2	12	12.5	32	16.9	40	8.0	93
	Moderate risk	9.8	42	16.2	68	24.2	113	23.0	99	18.5	322	9.8	34	18.2	81	23.8	89	24.7	91	19.3	295	4.6	14	11.2	42	22.0	56	24.2	57	14.5	169
	Great risk	76.6	327	64.8	273	38.2	178	27.0	116	51.3	894	72.8	252	65.5	291	45.2	169	30.7	113	53.9	825	79.8	241	80.1	301	56.5	144	44.1	104	67.6	790
How much do you think people risk harming themselves if they:																															
Use prescription drugs that are not prescribed to them?	No risk	10.3	44	8.8	37	6.7	31	5.1	22	7.7	134	13.2	46	8.5	38	7.7	29	8.7	32	9.4	145	11.6	35	4.0	15	5.1	13	6.0	14	6.6	77
	Slight risk	9.9	42	8.1	34	9.3	43	9.5	41	9.2	160	6.0	21	10.0	45	4.3	16	5.7	21	6.7	103	5.3	16	5.6	21	7.9	20	3.4	8	5.6	65
	Moderate risk	25.1	107	25.8	109	25.2	116	24.2	104	25.1	436	21.5	75	18.5	83	19.7	74	19.6	72	19.7	304	19.5	59	13.4	50	17.4	44	15.7	37	16.3	190
	Great risk	54.7	233	57.3	242	58.8	271	61.2	263	58.0	1,009	59.3	207	62.9	282	68.4	257	65.9	242	64.2	988	63.7	193	76.9	287	69.6	176	74.9	176	71.5	832
How much do you think people risk harming themselves if they:																															
Use an electronic vapor product such as vape or e-cigarette once or twice a day?*	No risk	n/a	n/a	n/a	n/a	n/a	n/a	n/a	n/a	n/a	n/a	n/a	n/a	n/a	n/a	n/a	n/a	n/a	n/a	n/a	n/a	12.3	37	5.4	20	8.0	20	10.3	24	8.7	101
	Slight risk	n/a	n/a	n/a	n/a	n/a	n/a	n/a	n/a	n/a	n/a	n/a	n/a	n/a	n/a	n/a	n/a	n/a	n/a	n/a	n/a	8.3	25	10.8	40	14.9	37	15.0	35	11.9	137
	Moderate risk	n/a	n/a	n/a	n/a	n/a	n/a	n/a	n/a	n/a	n/a	n/a	n/a	n/a	n/a	n/a	n/a	n/a	n/a	n/a	n/a	21.6	65	22.8	85	28.5	71	29.1	68	25.0	289
	Great risk	n/a	n/a	n/a	n/a	n/a	n/a	n/a	n/a	n/a	n/a	n/a	n/a	n/a	n/a	n/a	n/a	n/a	n/a	n/a	n/a	57.8	174	61.0	227	48.6	121	45.7	107	54.4	629

\*The Pennsylvania Youth Survey (PAYS) was significantly revised from 2021 to 2023. Trend data are reported in this report when the data are comparable. When cells include an "n/a" notation, it means the question was either not asked in a previous administration or the question was revised in a way that the 2023 data are not directly comparable. Please note that any question with an \* at the end designates a question and/or response option that was part of this 2023 survey revision. Please see Appendix B of your Profile Report for a description of changes



Peer-Individual Risk Factor: Rebelliousness																															
Question	Response	County 2019										County 2021										County 2023									
		6th		8th		10th		12th		Total		6th		8th		10th		12th		Total		6th		8th		10th		12th		Total	
		%	n	%	n	%	n	%	n	%	n	%	n	%	n	%	n	%	n	%	n	%	n	%	n	%	n	%	n	%	n
I like to see how much I can get away with.	Very false	73.1	315	51.3	222	39.1	184	37.6	163	50.0	884	78.5	285	56.0	251	50.4	192	50.4	189	58.5	917	71.0	228	62.8	241	49.4	126	52.1	124	60.0	719
	Somewhat false	16.7	72	26.8	116	29.4	138	26.3	114	24.9	440	14.6	53	26.8	120	26.5	101	23.2	87	23.0	361	19.0	61	22.7	87	29.4	75	23.9	57	23.4	280
	Somewhat true	8.1	35	18.2	79	24.5	115	28.1	122	19.9	351	4.7	17	13.6	61	17.3	66	19.2	72	13.8	216	8.4	27	12.0	46	17.3	44	18.9	45	13.5	162
	Very true	2.1	9	3.7	16	7.0	33	8.1	35	5.3	93	2.2	8	3.6	16	5.8	22	7.2	27	4.7	73	1.6	5	2.6	10	3.9	10	5.0	12	3.1	37
I ignore the rules that get in my way.	Very false	77.4	336	58.7	254	48.7	230	46.0	201	57.5	1,021	79.5	287	62.1	278	58.3	221	53.1	198	63.0	984	72.9	231	67.1	255	56.1	143	56.1	133	64.1	762
	Somewhat false	15.0	65	24.5	106	29.2	138	28.6	125	24.4	434	14.4	52	26.8	120	28.0	106	30.6	114	25.1	392	21.8	69	22.9	87	29.8	76	25.7	61	24.6	293
	Somewhat true	6.5	28	12.7	55	18.0	85	19.7	86	14.3	254	5.3	19	9.6	43	10.6	40	12.9	48	9.6	150	4.4	14	8.7	33	12.2	31	12.2	29	9.0	107
	Very true	1.2	5	4.2	18	4.0	19	5.7	25	3.8	67	0.8	3	1.6	7	3.2	12	3.5	13	2.2	35	0.9	3	1.3	5	2.0	5	5.9	14	2.3	27
I do the opposite of what people tell me, just to get them mad.	Very false	72.9	317	59.4	258	57.6	272	61.0	268	62.6	1,115	77.7	276	68.5	307	61.7	235	64.5	240	68.0	1,058	73.0	232	63.4	243	57.6	147	65.3	154	65.1	776
	Somewhat false	17.9	78	23.3	101	23.1	109	22.8	100	21.8	388	14.6	52	19.4	87	26.5	101	23.1	86	21.0	326	16.0	51	23.8	91	28.6	73	22.0	52	22.4	267
	Somewhat true	7.8	34	14.3	62	14.2	67	12.3	54	12.2	217	6.2	22	8.5	38	9.4	36	9.4	35	8.4	131	8.2	26	10.2	39	10.6	27	8.5	20	9.4	112
	Very true	1.4	6	3.0	13	5.1	24	3.9	17	3.4	60	1.4	5	3.6	16	2.4	9	3.0	11	2.6	41	2.8	9	2.6	10	3.1	8	4.2	10	3.1	37

Peer-Individual Risk Factor: Depressive Symptoms																															
Question	Response	County 2019										County 2021										County 2023									
		6th		8th		10th		12th		Total		6th		8th		10th		12th		Total		6th		8th		10th		12th		Total	
		%	n	%	n	%	n	%	n	%	n	%	n	%	n	%	n	%	n	%	n	%	n	%	n	%	n	%	n	%	n
In the past 12 months, have you felt depressed or sad MOST days, even if you felt OK sometimes?	NO!	35.8	157	31.0	135	22.9	107	19.0	83	27.1	482	40.9	146	37.2	166	36.0	135	30.6	114	36.2	561	37.6	118	39.4	150	31.6	81	30.1	71	35.4	420
	no	24.1	106	24.5	107	24.1	113	27.1	118	25.0	444	23.8	85	24.0	107	24.3	91	24.7	92	24.2	375	25.5	80	27.3	104	32.0	82	33.5	79	29.1	345
	yes	26.9	118	24.5	107	32.1	150	33.7	147	29.3	522	25.5	91	24.4	109	24.8	93	25.7	96	25.1	389	28.0	88	22.6	86	24.6	63	25.4	60	25.0	297
	YES!	13.2	58	20.0	87	20.9	98	20.2	88	18.6	331	9.8	35	14.3	64	14.9	56	19.0	71	14.6	226	8.9	28	10.8	41	11.7	30	11.0	26	10.5	125
Sometimes I think that life is not worth it.	NO!	53.9	235	49.3	213	41.2	193	41.4	181	46.3	822	57.3	204	47.2	210	50.9	190	43.4	162	49.5	766	58.1	183	52.0	198	42.4	109	47.2	111	50.6	601
	no	25.2	110	22.0	95	28.1	132	27.5	120	25.8	457	22.2	79	24.9	111	21.4	80	24.4	91	23.3	361	18.4	58	25.7	98	30.4	78	26.0	61	24.8	295
	yes	13.5	59	17.8	77	20.3	95	20.1	88	18.0	319	14.9	53	17.3	77	18.0	67	19.6	73	17.5	270	17.5	55	13.9	53	21.0	54	21.3	50	17.8	212
	YES!	7.3	32	10.9	47	10.4	49	11.0	48	9.9	176	5.6	20	10.6	47	9.7	36	12.6	47	9.7	150	6.0	19	8.4	32	6.2	16	5.5	13	6.7	80
At times, I think I am no good at all.	NO!	39.6	172	35.8	155	28.3	132	28.9	126	33.1	585	46.3	165	37.4	166	40.5	151	36.0	134	39.9	616	46.2	144	42.0	159	34.8	89	38.8	90	40.9	482
	no	25.6	111	20.8	90	26.1	122	29.4	128	25.5	451	22.2	79	22.3	99	23.3	87	22.0	82	22.5	347	19.2	60	27.2	103	25.0	64	24.1	56	24.0	283
	yes	25.3	110	26.8	116	30.6	143	27.3	119	27.6	488	23.9	85	27.7	123	24.4	91	24.5	91	25.2	390	26.0	81	22.2	84	31.3	80	27.2	63	26.1	308
	YES!	9.4	41	16.6	72	15.0	70	14.4	63	13.9	246	7.6	27	12.6	56	11.8	44	17.5	65	12.4	192	8.7	27	8.7	33	9.0	23	9.9	23	9.0	106
All in all, I am inclined to think that I am a failure.	NO!	50.5	218	45.6	197	36.3	169	37.1	162	42.2	746	56.9	202	47.5	211	48.1	179	42.5	158	48.6	750	59.4	184	50.7	194	42.0	107	44.4	104	49.8	589
	no	29.9	129	23.6	102	31.5	147	35.7	156	30.2	534	22.5	80	25.9	115	25.0	93	26.3	98	25.0	386	21.3	66	30.8	118	29.8	76	31.2	73	28.2	333
	yes	13.0	56	17.6	76	20.6	96	16.7	73	17.0	301	13.5	48	17.1	76	17.2	64	17.5	65	16.4	253	14.2	44	10.2	39	20.4	52	17.9	42	15.0	177
	YES!	6.7	29	13.2	57	11.6	54	10.5	46	10.5	186	7.0	25	9.5	42	9.7	36	13.7	51	10.0	154	5.2	16	8.4	32	7.8	20	6.4	15	7.0	83

## Peer-Individual Risk Factor: Sensation Seeking

Question	Response	County 2019										County 2021										County 2023									
		6th		8th		10th		12th		Total		6th		8th		10th		12th		Total		6th		8th		10th		12th		Total	
		%	n	%	n	%	n	%	n	%	n	%	n	%	n	%	n	%	n	%	n	%	n	%	n	%	n	%	n	%	n
How many times have you:																															
Done what feels good no matter what?	Never	64.1	254	56.8	231	47.2	211	38.7	161	51.4	857	54.6	179	50.6	218	48.6	177	43.4	157	49.2	731	43.3	127	45.3	162	35.3	88	40.9	95	41.7	472
	I've done it, but not in the past year	14.9	59	13.8	56	15.2	68	13.9	58	14.5	241	18.6	61	16.0	69	14.3	52	17.1	62	16.4	244	11.9	35	13.4	48	17.7	44	14.2	33	14.1	160
	Less than once a month	4.3	17	9.1	37	13.0	58	13.0	54	10.0	166	6.7	22	10.9	47	11.8	43	12.4	45	10.6	157	11.9	35	13.1	47	13.7	34	11.6	27	12.6	143
	About once a month	3.0	12	5.2	21	7.8	35	12.5	52	7.2	120	2.7	9	7.4	32	8.5	31	9.7	35	7.2	107	9.6	28	8.4	30	10.8	27	9.9	23	9.5	108
	2 or 3 times a month	4.0	16	5.4	22	7.8	35	12.3	51	7.4	124	6.4	21	7.0	30	8.2	30	11.0	40	8.1	121	8.2	24	9.2	33	10.4	26	12.9	30	10.0	113
	Once a week or more	9.6	38	9.8	40	8.9	40	9.6	40	9.5	158	11.0	36	8.1	35	8.5	31	6.4	23	8.4	125	15.0	44	10.6	38	12.0	30	10.3	24	12.0	136
How many times have you:																															
Done something dangerous because someone dared you to do it?	Never	70.4	300	57.1	248	52.0	244	46.5	202	56.4	994	72.5	251	56.3	247	55.7	206	57.6	208	60.2	912	64.8	199	53.0	196	50.6	128	58.9	139	56.8	662
	I've done it, but not in the past year	19.5	83	21.2	92	23.0	108	25.6	111	22.3	394	18.5	64	18.5	81	20.3	75	19.4	70	19.1	290	19.5	60	22.4	83	22.1	56	15.3	36	20.2	235
	Less than once a month	3.5	15	10.8	47	11.9	56	17.1	74	10.9	192	3.2	11	12.5	55	11.6	43	11.4	41	9.9	150	6.8	21	11.4	42	11.9	30	13.1	31	10.6	124
	About once a month	3.8	16	5.1	22	5.5	26	5.3	23	4.9	87	2.0	7	6.4	28	6.5	24	6.4	23	5.4	82	3.9	12	7.3	27	9.5	24	5.5	13	6.5	76
	2 or 3 times a month	1.2	5	2.8	12	3.8	18	2.5	11	2.6	46	2.3	8	4.6	20	3.2	12	3.6	13	3.5	53	1.6	5	2.7	10	4.0	10	3.8	9	2.9	34
	Once a week or more	1.6	7	3.0	13	3.6	17	3.0	13	2.8	50	1.4	5	1.8	8	2.7	10	1.7	6	1.9	29	3.3	10	3.2	12	2.0	5	3.4	8	3.0	35
How many times have you:																															
Done crazy things even if they are a little dangerous?	Never	56.1	238	46.3	201	36.8	172	31.9	138	42.6	749	57.0	195	41.5	182	43.3	157	45.1	162	46.3	696	49.0	149	42.3	154	39.1	99	47.2	110	44.4	512
	I've done it, but not in the past year	22.4	95	21.2	92	25.6	120	22.5	97	23.0	404	23.7	81	20.5	90	21.8	79	20.6	74	21.6	324	21.1	64	21.4	78	21.3	54	18.5	43	20.7	239
	Less than once a month	10.4	44	14.1	61	17.1	80	22.7	98	16.1	283	6.4	22	14.6	64	15.7	57	15.6	56	13.2	199	9.9	30	15.1	55	15.0	38	12.4	29	13.2	152
	About once a month	4.2	18	6.5	28	7.5	35	8.8	38	6.8	119	4.7	16	11.4	50	9.9	36	8.4	30	8.8	132	4.3	13	8.5	31	13.4	34	9.0	21	8.6	99
	2 or 3 times a month	2.6	11	6.2	27	7.7	36	7.9	34	6.1	108	3.8	13	6.2	27	4.7	17	6.7	24	5.4	81	6.9	21	8.0	29	5.9	15	4.7	11	6.6	76
	Once a week or more	4.2	18	5.8	25	5.3	25	6.3	27	5.4	95	4.4	15	5.9	26	4.7	17	3.6	13	4.7	71	8.9	27	4.7	17	5.1	13	8.2	19	6.6	76

## Peer-Individual Risk Factor: Rewards for Antisocial Behavior

Question	Response	County 2019										County 2021										County 2023									
		6th		8th		10th		12th		Total		6th		8th		10th		12th		Total		6th		8th		10th		12th		Total	
		%	n	%	n	%	n	%	n	%	n	%	n	%	n	%	n	%	n	%	n	%	n	%	n	%	n	%	n	%	n
What are the chances you would be seen as cool if you:																															
Carried a handgun?	No or very little chance	91.0	382	87.6	376	87.1	406	84.9	371	87.6	1,535	83.7	288	82.2	366	89.1	328	87.5	314	85.5	1,296	84.5	257	84.8	318	79.0	196	80.3	184	82.6	955
	Little chance	5.5	23	7.0	30	8.2	38	9.4	41	7.5	132	9.0	31	9.4	42	7.3	27	7.2	26	8.3	126	8.9	27	9.1	34	12.5	31	14.0	32	10.7	124
	Some chance	1.9	8	3.7	16	1.9	9	3.9	17	2.9	50	3.5	12	4.7	21	2.4	9	3.1	11	3.5	53	4.3	13	4.3	16	6.5	16	3.5	8	4.6	53
	Pretty good chance	1.0	4	0.9	4	1.3	6	0.9	4	1.0	18	1.2	4	1.3	6	0.8	3	0.8	3	1.1	16	0.7	2	1.1	4	0.8	2	0.9	2	0.9	10
	Very good chance	0.7	3	0.7	3	1.5	7	0.9	4	1.0	17	2.6	9	2.2	10	0.3	1	1.4	5	1.6	25	1.6	5	0.8	3	1.2	3	1.3	3	1.2	14
What are the chances you would be seen as cool if you:																															
Began drinking alcoholic beverages regularly, that is, at least once or twice a month?	No or very little chance	88.2	367	73.7	316	56.4	263	46.9	205	65.8	1,151	86.9	298	74.5	331	61.6	226	59.3	213	70.6	1,068	87.1	264	82.8	309	61.0	150	60.9	140	74.9	863
	Little chance	7.0	29	14.2	61	22.7	106	21.3	93	16.5	289	5.5	19	13.1	58	16.3	60	16.4	59	13.0	196	7.3	22	10.2	38	22.0	54	21.3	49	14.1	163
	Some chance	2.6	11	8.2	35	11.2	52	18.1	79	10.1	177	2.9	10	6.8	30	10.1	37	10.0	36	7.5	113	3.3	10	4.6	17	9.3	23	10.9	25	6.5	75
	Pretty good chance	1.2	5	2.6	11	6.4	30	10.5	46	5.3	92	2.3	8	3.2	14	8.2	30	10.0	36	5.8	88	1.7	5	1.9	7	6.1	15	4.8	11	3.3	38
	Very good chance	1.0	4	1.4	6	3.2	15	3.2	14	2.2	39	2.3	8	2.5	11	3.8	14	4.2	15	3.2	48	0.7	2	0.5	2	1.6	4	2.2	5	1.1	13
What are the chances you would be seen as cool if you:																															
Smoked cigarettes?	No or very little chance	90.4	377	82.8	356	72.5	338	67.5	295	78.1	1,366	88.0	301	78.6	349	78.1	286	72.9	261	79.3	1,197	86.4	261	85.4	316	74.0	182	76.1	175	81.4	934
	Little chance	6.0	25	9.1	39	15.2	71	21.1	92	13.0	227	3.5	12	12.2	54	10.7	39	14.5	52	10.4	157	6.3	19	8.9	33	14.2	35	15.2	35	10.6	122
	Some chance	1.4	6	4.9	21	5.6	26	7.8	34	5.0	87	4.1	14	4.5	20	6.0	22	6.7	24	5.3	80	5.6	17	3.8	14	7.3	18	5.7	13	5.4	62
	Pretty good chance	1.0	4	2.1	9	3.6	17	2.7	12	2.4	42	0.9	3	1.6	7	3.3	12	3.1	11	2.2	33	0.7	2	1.4	5	2.0	5	1.3	3	1.3	15
	Very good chance	1.2	5	1.2	5	3.0	14	0.9	4	1.6	28	3.5	12	3.2	14	1.9	7	2.8	10	2.8	43	1.0	3	0.5	2	2.4	6	1.7	4	1.3	15
What are the chances you would be seen as cool if you:																															
Used marijuana?	No or very little chance	92.3	382	75.2	324	49.8	232	38.1	166	63.2	1,104	89.1	302	76.0	336	65.2	238	57.3	205	71.9	1,081	90.0	271	83.3	309	63.2	156	63.8	146	76.8	882
	Little chance	3.9	16	9.3	40	16.1	75	19.3	84	12.3	215	3.8	13	10.4	46	13.2	48	15.9	57	10.9	164	4.3	13	7.5	28	14.2	35	17.0	39	10.0	115
	Some chance	1.0	4	10.7	46	15.5	72	20.2	88	12.0	210	2.7	9	5.4	24	10.1	37	8.1	29	6.6	99	3.3	10	5.7	21	11.7	29	10.5	24	7.3	84
	Pretty good chance	1.4	6	1.9	8	10.3	48	13.1	57	6.8	119	1.5	5	4.1	18	7.7	28	11.2	40	6.1	91	1.0	3	3.0	11	4.9	12	4.8	11	3.2	37
	Very good chance	1.4	6	3.0	13	8.4	39	9.4	41	5.7	99	2.9	10	4.1	18	3.8	14	7.5	27	4.6	69	1.3	4	0.5	2	6.1	15	3.9	9	2.6	30

## Peer-Individual Risk Factor: Interaction with Antisocial Peers

Question	Response	County 2019										County 2021										County 2023									
		6th		8th		10th		12th		Total		6th		8th		10th		12th		Total		6th		8th		10th		12th		Total	
		%	n	%	n	%	n	%	n	%	n	%	n	%	n	%	n	%	n	%	n	%	n	%	n	%	n	%	n	%	n
Think of up to four of your best friends (the friends you feel closest to). In the past 12 months, how many of your best friends have:																															
Been arrested?	None	96.9	409	92.5	406	90.6	424	91.0	396	92.7	1,635	99.4	342	98.0	434	96.0	356	95.6	345	97.2	1,477	100.0	300	98.1	366	91.9	227	91.8	212	96.0	1,105
	1	0.9	4	4.3	19	5.1	24	5.3	23	4.0	70	0.6	2	1.8	8	3.2	12	1.9	7	1.9	29	0.0	0	1.3	5	6.5	16	6.1	14	3.0	35
	2	0.2	1	0.9	4	2.6	12	2.1	9	1.5	26	0.0	0	0.0	0	0.3	1	1.7	6	0.5	7	0.0	0	0.0	0	1.2	3	0.9	2	0.4	5
	3	0.2	1	0.9	4	0.9	4	0.9	4	0.7	13	0.0	0	0.0	0	0.3	1	0.3	1	0.1	2	0.0	0	0.0	0	0.0	0	0.9	2	0.2	2
	4	1.7	7	1.4	6	0.9	4	0.7	3	1.1	20	0.0	0	0.2	1	0.3	1	0.6	2	0.3	4	0.0	0	0.5	2	0.4	1	0.4	1	0.3	4
Think of up to four of your best friends (the friends you feel closest to). In the past 12 months, how many of your best friends have:																															
Dropped out of school?	None	96.7	408	95.0	414	94.2	440	92.6	402	94.6	1,664	98.5	337	96.8	429	94.1	348	93.4	337	95.7	1,451	96.0	286	96.5	360	93.1	230	91.3	211	94.6	1,087
	1	2.4	10	4.4	19	2.8	13	4.8	21	3.6	63	1.5	5	2.7	12	4.3	16	6.1	22	3.6	55	3.7	11	2.7	10	6.1	15	6.9	16	4.5	52
	2	0.7	3	0.7	3	1.5	7	1.8	8	1.2	21	0.0	0	0.0	0	0.8	3	0.0	0	0.2	3	0.0	0	0.0	0	0.8	2	0.4	1	0.3	3
	3	0.0	0	0.0	0	0.9	4	0.5	2	0.3	6	0.0	0	0.2	1	0.5	2	0.0	0	0.2	3	0.0	0	0.3	1	0.0	0	0.9	2	0.3	3
	4	0.2	1	0.0	0	0.6	3	0.2	1	0.3	5	0.0	0	0.2	1	0.3	1	0.6	2	0.3	4	0.3	1	0.5	2	0.0	0	0.4	1	0.3	4
Think of up to four of your best friends (the friends you feel closest to). In the past 12 months, how many of your best friends have:																															
Stolen or tried to steal a motor vehicle such as a car or motorcycle?	None	99.5	419	97.5	428	95.1	446	97.5	424	97.3	1,717	100.0	343	97.8	435	95.4	354	97.8	352	97.7	1,484	99.3	297	98.9	368	97.2	241	93.5	215	97.6	1,121
	1	0.0	0	1.8	8	3.2	15	1.1	5	1.6	28	0.0	0	1.3	6	3.2	12	1.7	6	1.6	24	0.3	1	0.3	1	0.8	2	3.9	9	1.1	13
	2	0.2	1	0.7	3	1.7	8	0.2	1	0.7	13	0.0	0	0.2	1	0.5	2	0.0	0	0.2	3	0.0	0	0.3	1	1.6	4	0.4	1	0.5	6
	3	0.0	0	0.0	0	0.0	0	0.2	1	0.1	1	0.0	0	0.2	1	0.0	0	0.0	0	0.1	1	0.0	0	0.0	0	0.0	0	0.4	1	0.1	1
	4	0.2	1	0.0	0	0.0	0	0.9	4	0.3	5	0.0	0	0.4	2	0.8	3	0.6	2	0.5	7	0.3	1	0.5	2	0.4	1	1.7	4	0.7	8
Think of up to four of your best friends (the friends you feel closest to). In the past 12 months, how many of your best friends have:																															
Been suspended from school?	None	81.8	341	70.1	307	75.8	354	81.4	355	77.2	1,357	87.8	301	77.1	343	79.4	293	88.9	321	82.9	1,258	88.0	263	77.7	289	73.6	181	81.3	187	80.2	920
	1	12.9	54	15.5	68	15.2	71	11.7	51	13.9	244	9.3	32	13.0	58	10.6	39	6.1	22	9.9	151	9.7	29	14.2	53	15.9	39	10.4	24	12.6	145
	2	3.4	14	6.4	28	5.1	24	4.6	20	4.9	86	2.0	7	5.2	23	5.4	20	2.5	9	3.9	59	0.3	1	5.4	20	5.3	13	4.8	11	3.9	45
	3	1.0	4	3.0	13	1.7	8	1.4	6	1.8	31	0.6	2	2.9	13	1.6	6	0.8	3	1.6	24	1.3	4	1.6	6	2.4	6	1.7	4	1.7	20
	4	1.0	4	5.0	22	2.1	10	0.9	4	2.3	40	0.3	1	1.8	8	3.0	11	1.7	6	1.7	26	0.7	2	1.1	4	2.8	7	1.7	4	1.5	17
Think of up to four of your best friends (the friends you feel closest to). In the past 12 months, how many of your best friends have:																															
Carried a handgun?	None	97.6	404	95.4	416	97.2	453	94.2	409	96.1	1,682	97.7	333	95.5	424	97.3	359	96.9	349	96.8	1,465	97.6	287	97.9	365	95.2	236	93.5	215	96.3	1,103
	1	2.2	9	3.0	13	1.1	5	2.5	11	2.2	38	1.2	4	3.4	15	1.9	7	1.9	7	2.2	33	1.7	5	1.3	5	3.6	9	3.9	9	2.4	28
	2	0.0	0	0.9	4	1.1	5	1.8	8	1.0	17	0.9	3	0.0	0	0.3	1	0.6	2	0.4	6	0.0	0	0.0	0	0.4	1	1.7	4	0.4	5
	3	0.2	1	0.2	1	0.0	0	0.2	1	0.2	3	0.0	0	0.5	2	0.0	0	0.0	0	0.1	2	0.3	1	0.3	1	0.0	0	0.4	1	0.3	3
	4	0.0	0	0.5	2	0.6	3	1.2	5	0.6	10	0.3	1	0.7	3	0.5	2	0.6	2	0.5	8	0.3	1	0.5	2	0.8	2	0.4	1	0.5	6

**Peer-Individual Risk Factor: Interaction with Antisocial Peers (continued)**

Question	Response	County 2019										County 2021										County 2023									
		6th		8th		10th		12th		Total		6th		8th		10th		12th		Total		6th		8th		10th		12th		Total	
		%	n	%	n	%	n	%	n	%	n	%	n	%	n	%	n	%	n	%	n	%	n	%	n	%	n	%	n	%	n
Think of up to four of your best friends (the friends you feel closest to). In the past 12 months, how many of your best friends have:																															
Sold illegal drugs?	None	99.5	419	96.6	421	89.1	415	84.1	365	92.2	1,620	100.0	343	97.3	427	94.6	348	87.8	318	95.0	1,436	99.3	290	98.7	366	93.5	231	85.7	198	95.1	1,085
	1	0.2	1	2.3	10	6.0	28	7.4	32	4.0	71	0.0	0	2.3	10	2.7	10	6.1	22	2.8	42	0.0	0	0.8	3	2.8	7	8.7	20	2.6	30
	2	0.0	0	0.7	3	3.4	16	5.3	23	2.4	42	0.0	0	0.0	0	0.8	3	3.0	11	0.9	14	0.7	2	0.3	1	2.0	5	2.6	6	1.2	14
	3	0.0	0	0.0	0	0.0	0	1.2	5	0.3	5	0.0	0	0.0	0	0.8	3	1.9	7	0.7	10	0.0	0	0.0	0	0.0	0	0.4	1	0.1	1
	4	0.2	1	0.5	2	1.5	7	2.1	9	1.1	19	0.0	0	0.5	2	1.1	4	1.1	4	0.7	10	0.0	0	0.3	1	1.6	4	2.6	6	1.0	11

**Peer-Individual Risk Factor: Friends' Use of Drugs**

Question	Response	County 2019										County 2021										County 2023									
		6th		8th		10th		12th		Total		6th		8th		10th		12th		Total		6th		8th		10th		12th		Total	
		%	n	%	n	%	n	%	n	%	n	%	n	%	n	%	n	%	n	%	n	%	n	%	n	%	n	%	n	%	n
Think of up to four of your best friends (the friends you feel closest to). In the past 12 months, how many of your best friends have:																															
Tried beer, wine, or hard liquor when their parents/caregivers didn't know about it?*	None	90.4	378	64.9	285	42.8	198	27.0	117	55.8	978	94.2	324	75.0	333	58.8	218	51.0	185	69.6	1,060	94.6	281	81.7	304	60.5	150	50.6	117	74.2	852
	1	5.5	23	14.4	63	19.0	88	14.3	62	13.5	236	4.4	15	15.8	70	14.3	53	9.1	33	11.2	171	3.0	9	12.1	45	15.7	39	15.6	36	11.2	129
	2	2.9	12	9.3	41	11.9	55	18.2	79	10.7	187	1.2	4	5.2	23	8.4	31	12.9	47	6.9	105	1.7	5	3.5	13	7.3	18	12.6	29	5.7	65
	3	0.5	2	5.2	23	9.9	46	7.6	33	5.9	104	0.3	1	1.6	7	5.9	22	7.2	26	3.7	56	0.3	1	0.8	3	6.0	15	7.4	17	3.1	36
	4	0.7	3	6.2	27	16.4	76	32.9	143	14.2	249	0.0	0	2.5	11	12.7	47	19.8	72	8.5	130	0.3	1	1.9	7	10.5	26	13.9	32	5.7	66
Think of up to four of your best friends (the friends you feel closest to). In the past 12 months, how many of your best friends have:																															
Smoked cigarettes?	None	96.4	405	84.4	369	72.2	337	60.2	262	78.1	1,373	98.5	338	91.0	403	84.6	313	75.1	271	87.3	1,325	97.3	286	92.5	344	81.8	202	77.5	179	88.4	1,011
	1	2.6	11	9.8	43	14.3	67	16.6	72	11.0	193	1.2	4	6.3	28	7.3	27	9.4	34	6.1	93	1.7	5	5.9	22	10.5	26	11.3	26	6.9	79
	2	0.2	1	3.4	15	7.3	34	11.5	50	5.7	100	0.3	1	1.8	8	3.5	13	6.6	24	3.0	46	0.7	2	0.5	2	3.6	9	4.3	10	2.0	23
	3	0.5	2	1.1	5	2.4	11	5.3	23	2.3	41	0.0	0	0.5	2	1.1	4	3.3	12	1.2	18	0.3	1	0.3	1	1.2	3	2.2	5	0.9	10
	4	0.2	1	1.1	5	3.9	18	6.4	28	3.0	52	0.0	0	0.5	2	3.5	13	5.5	20	2.3	35	0.0	0	0.8	3	2.8	7	4.8	11	1.8	21
Think of up to four of your best friends (the friends you feel closest to). In the past 12 months, how many of your best friends have:																															
Used LSD, cocaine or crack, amphetamines or another illegal drug?	None	99.3	417	96.4	424	89.1	415	82.1	357	91.6	1,613	100.0	343	96.8	428	93.5	345	91.7	332	95.5	1,448	99.3	293	98.7	368	94.3	232	88.7	204	95.9	1,097
	1	0.2	1	2.5	11	7.9	37	7.4	32	4.6	81	0.0	0	2.5	11	4.1	15	4.1	15	2.7	41	0.7	2	1.1	4	1.6	4	7.4	17	2.4	27
	2	0.2	1	0.2	1	1.9	9	6.4	28	2.2	39	0.0	0	0.5	2	0.8	3	1.7	6	0.7	11	0.0	0	0.0	0	2.4	6	1.3	3	0.8	9
	3	0.0	0	0.2	1	0.2	1	0.9	4	0.3	6	0.0	0	0.0	0	0.0	0	0.8	3	0.2	3	0.0	0	0.0	0	0.0	0	0.0	0	0.0	0
	4	0.2	1	0.7	3	0.9	4	3.2	14	1.2	22	0.0	0	0.2	1	1.6	6	1.7	6	0.9	13	0.0	0	0.3	1	1.6	4	2.6	6	1.0	11

\*The Pennsylvania Youth Survey (PAYS) was significantly revised from 2021 to 2023. Trend data are reported in this report when the data are comparable. When cells include an "n/a" notation, it means the question was either not asked in a previous administration or the question was revised in a way that the 2023 data are not directly comparable. Please note that any question with an \* at the end designates a question and/or response option that was part of this 2023 survey revision. Please see Appendix B of your Profile Report for a description of changes

### Peer-Individual Risk Factor: Friends' Use of Drugs (continued)

Question	Response	County 2019										County 2021										County 2023									
		6th		8th		10th		12th		Total		6th		8th		10th		12th		Total		6th		8th		10th		12th		Total	
		%	n	%	n	%	n	%	n	%	n	%	n	%	n	%	n	%	n	%	n	%	n	%	n	%	n	%	n	%	n
Think of up to four of your best friends (the friends you feel closest to). In the past 12 months, how many of your best friends have:																															
Used marijuana?	None	98.3	413	81.5	358	54.3	252	33.0	143	66.4	1,166	99.4	339	89.6	395	69.0	256	55.7	201	78.7	1,191	98.6	288	88.4	329	64.1	159	55.4	128	79.1	904
	1	1.0	4	12.1	53	11.9	55	16.4	71	10.4	183	0.6	2	5.9	26	10.2	38	11.4	41	7.1	107	0.7	2	7.3	27	14.5	36	18.2	42	9.4	107
	2	0.2	1	3.2	14	11.9	55	13.4	58	7.3	128	0.0	0	2.3	10	4.9	18	8.6	31	3.9	59	0.3	1	1.1	4	6.9	17	9.1	21	3.8	43
	3	0.0	0	0.9	4	9.1	42	9.2	40	4.9	86	0.0	0	0.7	3	5.1	19	5.8	21	2.8	43	0.3	1	1.1	4	4.0	10	5.6	13	2.4	28
	4	0.5	2	2.3	10	12.9	60	27.9	121	11.0	193	0.0	0	1.6	7	10.8	40	18.6	67	7.5	114	0.0	0	2.2	8	10.5	26	11.7	27	5.3	61

### Peer-Individual Protective Factor: Belief in the Moral Order

Question	Response	County 2019										County 2021										County 2023									
		6th		8th		10th		12th		Total		6th		8th		10th		12th		Total		6th		8th		10th		12th		Total	
		%	n	%	n	%	n	%	n	%	n	%	n	%	n	%	n	%	n	%	n	%	n	%	n	%	n	%	n	%	n
I think it is okay to take something without asking as long as you get away with it.	NO!	77.0	321	61.0	264	52.4	243	51.2	222	60.1	1,050	77.2	261	64.5	284	59.0	217	58.2	209	64.5	971	77.7	234	61.9	231	52.0	128	61.4	140	63.9	733
	no	19.9	83	31.9	138	41.2	191	41.0	178	33.8	590	21.0	71	32.3	142	34.8	128	35.4	127	31.1	468	20.6	62	34.9	130	39.4	97	31.1	71	31.4	360
	yes	2.4	10	6.0	26	4.3	20	6.0	26	4.7	82	1.5	5	3.0	13	4.9	18	4.7	17	3.5	53	1.3	4	2.4	9	7.7	19	6.6	15	4.1	47
	YES!	0.7	3	1.2	5	2.2	10	1.8	8	1.5	26	0.3	1	0.2	1	1.4	5	1.7	6	0.9	13	0.3	1	0.8	3	0.8	2	0.9	2	0.7	8
It is alright to beat people up if they start the fight.	NO!	48.3	199	30.6	131	20.1	93	22.4	97	30.0	520	55.5	187	34.0	150	29.7	109	34.8	124	38.0	570	49.5	149	32.7	122	27.9	69	35.2	81	36.6	421
	no	30.8	127	24.5	105	26.2	121	23.6	102	26.2	455	27.0	91	28.3	125	22.9	84	19.1	68	24.5	368	24.9	75	27.1	101	20.2	50	18.7	43	23.4	269
	yes	15.3	63	25.5	109	33.3	154	34.6	150	27.4	476	11.0	37	25.4	112	29.7	109	32.0	114	24.8	372	16.3	49	26.3	98	32.0	79	29.1	67	25.5	293
	YES!	5.6	23	19.4	83	20.3	94	19.4	84	16.4	284	6.5	22	12.2	54	17.7	65	14.0	50	12.7	191	9.3	28	13.9	52	19.8	49	17.0	39	14.6	168
I think sometimes it's okay to cheat at school.	NO!	66.4	279	38.9	169	26.8	125	23.6	102	38.5	675	73.0	243	49.1	217	34.5	127	36.3	130	47.8	717	67.3	202	46.1	170	28.5	70	32.0	73	45.1	515
	no	27.9	117	39.5	172	38.8	181	40.0	173	36.7	643	21.9	73	35.5	157	36.4	134	29.1	104	31.2	468	26.0	78	36.3	134	35.4	87	32.0	73	32.5	372
	yes	5.2	22	16.6	72	26.8	125	29.1	126	19.7	345	4.8	16	13.8	61	23.4	86	29.1	104	17.8	267	5.7	17	16.0	59	27.6	68	31.6	72	18.9	216
	YES!	0.5	2	5.1	22	7.5	35	7.4	32	5.2	91	0.3	1	1.6	7	5.7	21	5.6	20	3.3	49	1.0	3	1.6	6	8.5	21	4.4	10	3.5	40
It is important to be honest with your parents/caregivers, even if they become upset or you get punished.*	NO!	6.7	28	9.9	43	6.0	28	5.5	24	7.0	123	16.5	55	18.1	80	16.8	62	20.2	72	17.9	269	11.7	35	15.1	56	17.1	42	18.0	41	15.2	174
	no	4.8	20	10.6	46	13.2	61	14.4	63	10.9	190	4.2	14	10.7	47	13.6	50	15.1	54	11.0	165	4.7	14	10.3	38	13.8	34	15.4	35	10.6	121
	yes	26.1	109	38.1	165	44.3	205	47.8	209	39.3	688	25.8	86	36.3	160	36.1	133	40.1	143	34.8	522	27.9	83	37.6	139	39.8	98	36.4	83	35.3	403
	YES!	62.4	261	41.3	179	36.5	169	32.3	141	42.8	750	53.5	178	34.9	154	33.4	123	24.6	88	36.2	543	55.7	166	37.0	137	29.3	72	30.3	69	38.9	444

\*The Pennsylvania Youth Survey (PAYS) was significantly revised from 2021 to 2023. Trend data are reported in this report when the data are comparable. When cells include an "n/a" notation, it means the question was either not asked in a previous administration or the question was revised in a way that the 2023 data are not directly comparable. Please note that any question with an \* at the end designates a question and/or response option that was part of this 2023 survey revision. Please see Appendix B of your Profile Report for a description of changes

Peer-Individual Protective Factor: Religiosity																															
Question	Response	County 2019										County 2021										County 2023									
		6th		8th		10th		12th		Total		6th		8th		10th		12th		Total		6th		8th		10th		12th		Total	
		%	n	%	n	%	n	%	n	%	n	%	n	%	n	%	n	%	n	%	n	%	n	%	n	%	n	%	n	%	n
How often do you attend religious services or activities?	Never	27.7	117	38.7	163	42.9	199	44.1	191	38.5	670	33.1	118	33.8	150	42.2	160	52.0	193	40.1	621	35.9	111	40.8	152	45.7	117	48.3	114	42.1	494
	Rarely	32.9	139	27.8	117	33.4	155	28.9	125	30.8	536	36.5	130	33.3	148	30.1	114	28.8	107	32.2	499	29.8	92	29.5	110	30.9	79	28.8	68	29.7	349
	1-2 times a month	11.4	48	12.6	53	10.8	50	12.2	53	11.7	204	13.2	47	12.6	56	14.0	53	10.0	37	12.5	193	12.6	39	11.0	41	8.2	21	10.2	24	10.6	125
	Once a week or more	28.0	118	20.9	88	12.9	60	14.8	64	19.0	330	17.1	61	20.3	90	13.7	52	9.2	34	15.3	237	21.7	67	18.8	70	15.2	39	12.7	30	17.5	206

Substance Use: Willingness to Use																															
Question	Response	County 2019										County 2021										County 2023									
		6th		8th		10th		12th		Total		6th		8th		10th		12th		Total		6th		8th		10th		12th		Total	
		%	n	%	n	%	n	%	n	%	n	%	n	%	n	%	n	%	n	%	n	%	n	%	n	%	n	%	n	%	n
How willing are you to try ALCOHOL (beer, wine, coolers, hard liquor such as vodka, whiskey, gin, or rum) before you are 21? This is not a question about current or past use.	I would never try it	64.5	301	38.8	172	23.2	109	17.1	77	36.0	659	64.1	266	42.5	204	36.4	153	27.4	113	42.6	736	66.1	254	56.0	235	39.9	114	35.7	94	51.5	697
	I probably wouldn't try it	16.9	79	18.1	80	14.1	66	9.3	42	14.6	267	18.8	78	20.8	100	16.0	67	10.4	43	16.7	288	17.4	67	18.3	77	20.3	58	11.4	30	17.1	232
	I'm not sure whether or not I would try it	12.6	59	22.8	101	21.3	100	16.2	73	18.2	333	10.6	44	22.9	110	22.1	93	20.3	84	19.2	331	11.2	43	17.4	73	19.6	56	20.2	53	16.6	225
	I would like to try it	5.4	25	15.3	68	25.6	120	33.3	150	19.8	363	5.8	24	10.2	49	16.2	68	26.2	108	14.4	249	3.9	15	6.4	27	13.6	39	22.8	60	10.4	141
	I would try it any chance I got	0.6	3	5.0	22	15.8	74	24.0	108	11.3	207	0.7	3	3.5	17	9.3	39	15.7	65	7.2	124	1.3	5	1.9	8	6.6	19	9.9	26	4.3	58
How willing are you to try MARIJUANA (pot, hash, cannabis, weed, THC) before you are 21? This is not a question about current or past use.*	I would never try it	93.8	440	69.8	310	47.9	225	34.3	154	61.6	1,129	90.9	378	75.3	359	57.5	242	49.2	203	68.4	1,182	91.6	348	83.1	349	56.3	161	53.2	140	74.0	998
	I probably wouldn't try it	3.8	18	10.4	46	12.1	57	11.8	53	9.5	174	6.3	26	11.3	54	15.0	63	11.9	49	11.1	192	6.6	25	8.1	34	15.4	44	9.1	24	9.4	127
	I'm not sure whether or not I would try it	1.3	6	9.9	44	13.4	63	13.8	62	9.6	175	2.2	9	7.3	35	13.1	55	12.6	52	8.7	151	1.1	4	4.8	20	15.7	45	17.1	45	8.5	114
	I would like to try it	1.1	5	5.9	26	13.2	62	19.4	87	9.8	180	0.7	3	4.6	22	8.1	34	15.7	65	7.2	124	0.5	2	2.4	10	7.3	21	11.8	31	4.7	64
	I would try it any chance I got	0.0	0	4.1	18	13.4	63	20.7	93	9.5	174	0.0	0	1.5	7	6.4	27	10.7	44	4.5	78	0.3	1	1.7	7	5.2	15	8.7	23	3.4	46

\*The Pennsylvania Youth Survey (PAYS) was significantly revised from 2021 to 2023. Trend data are reported in this report when the data are comparable. When cells include an "n/a" notation, it means the question was either not asked in a previous administration or the question was revised in a way that the 2023 data are not directly comparable. Please note that any question with an \* at the end designates a question and/or response option that was part of this 2023 survey revision. Please see Appendix B of your Profile Report for a description of changes

## Substance Use: High Prevalence/Early Initiation Drugs

Question	Response	County 2019										County 2021										County 2023										
		6th		8th		10th		12th		Total		6th		8th		10th		12th		Total		6th		8th		10th		12th		Total		
		%	n	%	n	%	n	%	n	%	n	%	n	%	n	%	n	%	n	%	n	%	n	%	n	%	n	%	n	%	n	
Have you ever:																																
Had beer, wine, or hard liquor?*	Never	n/a	n/a	n/a	n/a	n/a	n/a	n/a	n/a	n/a	n/a	n/a	n/a	n/a	n/a	n/a	n/a	n/a	n/a	n/a	n/a	n/a	86.7	338	79.9	338	55.9	162	45.7	122	70.1	960
	Once or twice	n/a	n/a	n/a	n/a	n/a	n/a	n/a	n/a	n/a	n/a	n/a	n/a	n/a	n/a	n/a	n/a	n/a	n/a	n/a	n/a	n/a	10.8	42	16.5	70	27.6	80	17.2	46	17.4	238
	Once in awhile but not regularly	n/a	n/a	n/a	n/a	n/a	n/a	n/a	n/a	n/a	n/a	n/a	n/a	n/a	n/a	n/a	n/a	n/a	n/a	n/a	n/a	n/a	1.8	7	3.5	15	12.4	36	26.6	71	9.4	129
	Regularly in the past	n/a	n/a	n/a	n/a	n/a	n/a	n/a	n/a	n/a	n/a	n/a	n/a	n/a	n/a	n/a	n/a	n/a	n/a	n/a	n/a	n/a	0.3	1	0.0	0	2.4	7	4.5	12	1.5	20
	Regularly now	n/a	n/a	n/a	n/a	n/a	n/a	n/a	n/a	n/a	n/a	n/a	n/a	n/a	n/a	n/a	n/a	n/a	n/a	n/a	n/a	n/a	0.5	2	0.0	0	1.7	5	6.0	16	1.7	23
How often have you, in the past 30 days:																																
Had beer, wine, or hard liquor?*	Never	n/a	n/a	n/a	n/a	n/a	n/a	n/a	n/a	n/a	n/a	n/a	n/a	n/a	n/a	n/a	n/a	n/a	n/a	n/a	n/a	96.1	373	95.0	401	84.0	241	69.8	185	88.1	1,200	
	Once or twice	n/a	n/a	n/a	n/a	n/a	n/a	n/a	n/a	n/a	n/a	n/a	n/a	n/a	n/a	n/a	n/a	n/a	n/a	n/a	n/a	n/a	3.1	12	4.3	18	13.2	38	21.1	56	9.1	124
	Once or twice per week	n/a	n/a	n/a	n/a	n/a	n/a	n/a	n/a	n/a	n/a	n/a	n/a	n/a	n/a	n/a	n/a	n/a	n/a	n/a	n/a	n/a	0.5	2	0.5	2	2.1	6	7.9	21	2.3	31
	About once a day	n/a	n/a	n/a	n/a	n/a	n/a	n/a	n/a	n/a	n/a	n/a	n/a	n/a	n/a	n/a	n/a	n/a	n/a	n/a	n/a	n/a	0.0	0	0.2	1	0.3	1	0.0	0	0.1	2
	More than once a day	n/a	n/a	n/a	n/a	n/a	n/a	n/a	n/a	n/a	n/a	n/a	n/a	n/a	n/a	n/a	n/a	n/a	n/a	n/a	n/a	n/a	0.3	1	0.0	0	0.3	1	1.1	3	0.4	5
Have you ever:																																
Used marijuana (pot, hash, cannabis, weed, THC)?*	Never	n/a	n/a	n/a	n/a	n/a	n/a	n/a	n/a	n/a	n/a	n/a	n/a	n/a	n/a	n/a	n/a	n/a	n/a	n/a	n/a	99.0	385	95.0	396	82.2	236	65.5	173	87.7	1,190	
	Once or twice	n/a	n/a	n/a	n/a	n/a	n/a	n/a	n/a	n/a	n/a	n/a	n/a	n/a	n/a	n/a	n/a	n/a	n/a	n/a	n/a	n/a	1.0	4	2.6	11	8.4	24	12.5	33	5.3	72
	Once in awhile but not regularly	n/a	n/a	n/a	n/a	n/a	n/a	n/a	n/a	n/a	n/a	n/a	n/a	n/a	n/a	n/a	n/a	n/a	n/a	n/a	n/a	n/a	0.0	0	1.2	5	2.4	7	9.5	25	2.7	37
	Regularly in the past	n/a	n/a	n/a	n/a	n/a	n/a	n/a	n/a	n/a	n/a	n/a	n/a	n/a	n/a	n/a	n/a	n/a	n/a	n/a	n/a	n/a	0.0	0	0.7	3	3.8	11	4.5	12	1.9	26
	Regularly now	n/a	n/a	n/a	n/a	n/a	n/a	n/a	n/a	n/a	n/a	n/a	n/a	n/a	n/a	n/a	n/a	n/a	n/a	n/a	n/a	n/a	0.0	0	0.5	2	3.1	9	8.0	21	2.4	32
How often have you, in the past 30 days:																																
Used marijuana (pot, hash, cannabis, weed, THC)?*	Never	n/a	n/a	n/a	n/a	n/a	n/a	n/a	n/a	n/a	n/a	n/a	n/a	n/a	n/a	n/a	n/a	n/a	n/a	n/a	n/a	99.2	386	97.1	405	91.5	260	84.0	220	94.0	1,271	
	Once or twice	n/a	n/a	n/a	n/a	n/a	n/a	n/a	n/a	n/a	n/a	n/a	n/a	n/a	n/a	n/a	n/a	n/a	n/a	n/a	n/a	n/a	0.8	3	1.0	4	4.6	13	4.6	12	2.4	32
	Once or twice per week	n/a	n/a	n/a	n/a	n/a	n/a	n/a	n/a	n/a	n/a	n/a	n/a	n/a	n/a	n/a	n/a	n/a	n/a	n/a	n/a	n/a	0.0	0	1.7	7	1.4	4	3.8	10	1.6	21
	About once a day	n/a	n/a	n/a	n/a	n/a	n/a	n/a	n/a	n/a	n/a	n/a	n/a	n/a	n/a	n/a	n/a	n/a	n/a	n/a	n/a	n/a	0.0	0	0.2	1	0.4	1	3.1	8	0.7	10
	More than once a day	n/a	n/a	n/a	n/a	n/a	n/a	n/a	n/a	n/a	n/a	n/a	n/a	n/a	n/a	n/a	n/a	n/a	n/a	n/a	n/a	n/a	0.0	0	0.0	0	2.1	6	4.6	12	1.3	18
Have you ever:																																
Sniffed glue, breathed the contents of an aerosol spray can, or inhaled other gases or sprays in order to get high?*	Never	n/a	n/a	n/a	n/a	n/a	n/a	n/a	n/a	n/a	n/a	n/a	n/a	n/a	n/a	n/a	n/a	n/a	n/a	n/a	n/a	92.5	358	96.2	403	92.1	267	94.7	252	94.0	1,280	
	Once or twice	n/a	n/a	n/a	n/a	n/a	n/a	n/a	n/a	n/a	n/a	n/a	n/a	n/a	n/a	n/a	n/a	n/a	n/a	n/a	n/a	n/a	6.5	25	2.6	11	5.5	16	4.1	11	4.6	63
	Once in awhile but not regularly	n/a	n/a	n/a	n/a	n/a	n/a	n/a	n/a	n/a	n/a	n/a	n/a	n/a	n/a	n/a	n/a	n/a	n/a	n/a	n/a	n/a	0.8	3	0.5	2	1.4	4	0.8	2	0.8	11
	Regularly in the past	n/a	n/a	n/a	n/a	n/a	n/a	n/a	n/a	n/a	n/a	n/a	n/a	n/a	n/a	n/a	n/a	n/a	n/a	n/a	n/a	n/a	0.3	1	0.7	3	0.7	2	0.4	1	0.5	7
	Regularly now	n/a	n/a	n/a	n/a	n/a	n/a	n/a	n/a	n/a	n/a	n/a	n/a	n/a	n/a	n/a	n/a	n/a	n/a	n/a	n/a	n/a	0.0	0	0.0	0	0.3	1	0.0	0	0.1	1

\*The Pennsylvania Youth Survey (PAYS) was significantly revised from 2021 to 2023. Trend data are reported in this report when the data are comparable. When cells include an "n/a" notation, it means the question was either not asked in a previous administration or the question was revised in a way that the 2023 data are not directly comparable. Please note that any question with an \* at the end designates a question and/or response option that was part of this 2023 survey revision. Please see Appendix B of your Profile Report for a description of changes



Substance Use: High Prevalence/Early Initiation Drugs (continued)																																
Question	Response	County 2019										County 2021										County 2023										
		6th		8th		10th		12th		Total		6th		8th		10th		12th		Total		6th		8th		10th		12th		Total		
		%	n	%	n	%	n	%	n	%	n	%	n	%	n	%	n	%	n	%	n	%	n	%	n	%	n	%	n	%	n	
How often have you, in the past 30 days:																																
Sniffed glue, breathed the contents of an aerosol spray can, or inhaled other gases or sprays in order to get high?*	Never	n/a	n/a	n/a	n/a	n/a	n/a	n/a	n/a	n/a	n/a	n/a	n/a	n/a	n/a	n/a	n/a	n/a	n/a	n/a	n/a	n/a	95.3	368	99.0	415	99.0	286	98.9	263	97.9	1,332
	Once or twice	n/a	n/a	n/a	n/a	n/a	n/a	n/a	n/a	n/a	n/a	n/a	n/a	n/a	n/a	n/a	n/a	n/a	n/a	n/a	n/a	n/a	4.4	17	0.5	2	1.0	3	1.1	3	1.8	25
	Once or twice per week	n/a	n/a	n/a	n/a	n/a	n/a	n/a	n/a	n/a	n/a	n/a	n/a	n/a	n/a	n/a	n/a	n/a	n/a	n/a	n/a	n/a	0.0	0	0.5	2	0.0	0	0.0	0	0.1	2
	About once a day	n/a	n/a	n/a	n/a	n/a	n/a	n/a	n/a	n/a	n/a	n/a	n/a	n/a	n/a	n/a	n/a	n/a	n/a	n/a	n/a	n/a	0.0	0	0.0	0	0.0	0	0.0	0	0.0	0
	More than once a day	n/a	n/a	n/a	n/a	n/a	n/a	n/a	n/a	n/a	n/a	n/a	n/a	n/a	n/a	n/a	n/a	n/a	n/a	n/a	n/a	n/a	0.3	1	0.0	0	0.0	0	0.0	0	0.1	1
Have you ever:																																
Smoked cigarettes?*	Never	98.1	470	88.8	395	79.3	379	66.4	302	83.3	1,546	98.8	416	94.2	454	89.0	380	80.8	340	90.8	1,590	99.7	382	96.4	402	92.8	269	83.1	222	94.0	1,275	
	Once or twice	1.7	8	8.3	37	10.3	49	16.7	76	9.2	170	1.2	5	4.6	22	7.5	32	7.6	32	5.2	91	0.3	1	3.6	15	4.5	13	8.6	23	3.8	52	
	Once in awhile but not regularly	0.0	0	2.2	10	6.3	30	11.4	52	5.0	92	0.0	0	1.2	6	2.3	10	8.1	34	2.9	50	0.0	0	0.0	0	1.0	3	3.0	8	0.8	11	
	Regularly in the past	0.0	0	0.4	2	3.3	16	2.6	12	1.6	30	0.0	0	0.0	0	0.9	4	2.6	11	0.9	15	0.0	0	0.0	0	1.4	4	3.7	10	1.0	14	
	Regularly now	0.2	1	0.2	1	0.8	4	2.9	13	1.0	19	0.0	0	0.0	0	0.2	1	1.0	4	0.3	5	0.0	0	0.0	0	0.3	1	1.5	4	0.4	5	
How often have you, in the past 30 days:																																
Smoked cigarettes?	Never	99.8	479	97.3	435	92.3	442	87.2	396	94.2	1,752	100.0	421	99.4	478	96.3	411	92.1	387	97.0	1,697	99.7	382	99.0	412	98.6	284	95.5	254	98.4	1,332	
	Once or twice	0.0	0	2.0	9	5.8	28	8.4	38	4.0	75	0.0	0	0.4	2	2.8	12	6.2	26	2.3	40	0.3	1	1.0	4	1.0	3	1.9	5	1.0	13	
	Once or twice per week	0.0	0	0.0	0	0.8	4	1.5	7	0.6	11	0.0	0	0.2	1	0.5	2	1.2	5	0.5	8	0.0	0	0.0	0	0.0	0	0.4	1	0.1	1	
	About once a day	0.2	1	0.0	0	0.6	3	0.4	2	0.3	6	0.0	0	0.0	0	0.2	1	0.2	1	0.1	2	0.0	0	0.0	0	0.0	0	1.5	4	0.3	4	
	More than once a day	0.0	0	0.7	3	0.4	2	2.4	11	0.9	16	0.0	0	0.0	0	0.2	1	0.2	1	0.1	2	0.0	0	0.0	0	0.3	1	0.8	2	0.2	3	
Have you ever:																																
Used smokeless tobacco (chew, snuff, plug, dipping tobacco, or chewing tobacco)?*	Never	99.4	473	95.1	425	87.7	420	80.9	368	90.8	1,686	99.5	419	97.7	469	94.8	405	89.8	378	95.5	1,671	99.2	382	99.0	416	95.9	278	90.9	241	96.8	1,317	
	Once or twice	0.6	3	3.6	16	6.7	32	10.1	46	5.2	97	0.5	2	1.9	9	2.8	12	6.2	26	2.8	49	0.8	3	1.0	4	3.4	10	3.4	9	1.9	26	
	Once in awhile but not regularly	0.0	0	1.1	5	4.0	19	4.0	18	2.3	42	0.0	0	0.2	1	1.4	6	2.1	9	0.9	16	0.0	0	0.0	0	0.7	2	1.5	4	0.4	6	
	Regularly in the past	0.0	0	0.0	0	1.3	6	2.9	13	1.0	19	0.0	0	0.2	1	0.2	1	1.0	4	0.3	6	0.0	0	0.0	0	0.0	0	1.1	3	0.2	3	
	Regularly now	0.0	0	0.2	1	0.4	2	2.2	10	0.7	13	0.0	0	0.0	0	0.7	3	1.0	4	0.4	7	0.0	0	0.0	0	0.0	0	3.0	8	0.6	8	
How often have you, in the past 30 days:																																
Used smokeless tobacco (chew, snuff, plug, dipping tobacco, or chewing tobacco)?	Never	100.0	477	98.2	439	95.0	454	90.8	413	96.0	1,783	100.0	421	100.0	480	98.1	418	96.2	405	98.6	1,724	99.7	384	99.8	419	99.0	287	95.8	254	98.8	1,344	
	Once or twice	0.0	0	1.6	7	2.9	14	5.1	23	2.4	44	0.0	0	0.0	0	1.2	5	2.1	9	0.8	14	0.3	1	0.2	1	1.0	3	1.9	5	0.7	10	
	Once or twice per week	0.0	0	0.0	0	1.0	5	1.1	5	0.5	10	0.0	0	0.0	0	0.0	0	0.5	2	0.1	2	0.0	0	0.0	0	0.0	0	0.8	2	0.1	2	
	About once a day	0.0	0	0.0	0	0.6	3	0.9	4	0.4	7	0.0	0	0.0	0	0.5	2	0.0	0	0.1	2	0.0	0	0.0	0	0.0	0	0.8	2	0.1	2	
	More than once a day	0.0	0	0.2	1	0.4	2	2.2	10	0.7	13	0.0	0	0.0	0	0.2	1	1.2	5	0.3	6	0.0	0	0.0	0	0.0	0	0.8	2	0.1	2	

\*The Pennsylvania Youth Survey (PAYS) was significantly revised from 2021 to 2023. Trend data are reported in this report when the data are comparable. When cells include an "n/a" notation, it means the question was either not asked in a previous administration or the question was revised in a way that the 2023 data are not directly comparable. Please note that any question with an \* at the end designates a question and/or response option that was part of this 2023 survey revision. Please see Appendix B of your Profile Report for a description of changes

### Substance Use: High Prevalence/Early Initiation Drugs (continued)

Question	Response	County 2019										County 2021										County 2023																						
		6th		8th		10th		12th		Total		6th		8th		10th		12th		Total		6th		8th		10th		12th		Total														
		%	n	%	n	%	n	%	n	%	n	%	n	%	n	%	n	%	n	%	n	%	n	%	n	%	n	%	n	%	n													
Have you ever:																																												
Used an electronic vapor product as such as e-cigarettes, vapes, mods, e-cigs, e-hookahs, or vape pens?*	Never	n/a	n/a	n/a	n/a	n/a	n/a	n/a	n/a	n/a	n/a	n/a	n/a	n/a	n/a	n/a	n/a	n/a	n/a	n/a	n/a	n/a	n/a	n/a	n/a	n/a	n/a	n/a	n/a	n/a	n/a	n/a	n/a	n/a	97.2	375	92.6	386	73.4	213	65.5	175	84.5	1,149
	Once or twice	n/a	n/a	n/a	n/a	n/a	n/a	n/a	n/a	n/a	n/a	n/a	n/a	n/a	n/a	n/a	n/a	n/a	n/a	n/a	n/a	n/a	n/a	n/a	n/a	n/a	n/a	n/a	n/a	n/a	n/a	n/a	2.6	10	4.8	20	12.4	36	11.2	30	7.1	96		
	Once in awhile but not regularly	n/a	n/a	n/a	n/a	n/a	n/a	n/a	n/a	n/a	n/a	n/a	n/a	n/a	n/a	n/a	n/a	n/a	n/a	n/a	n/a	n/a	n/a	n/a	n/a	n/a	n/a	n/a	n/a	n/a	n/a	0.0	0	0.5	2	3.1	9	7.9	21	2.4	32			
	Regularly in the past	n/a	n/a	n/a	n/a	n/a	n/a	n/a	n/a	n/a	n/a	n/a	n/a	n/a	n/a	n/a	n/a	n/a	n/a	n/a	n/a	n/a	n/a	n/a	n/a	n/a	n/a	n/a	n/a	n/a	n/a	0.3	1	1.4	6	4.8	14	4.9	13	2.5	34			
	Regularly now	n/a	n/a	n/a	n/a	n/a	n/a	n/a	n/a	n/a	n/a	n/a	n/a	n/a	n/a	n/a	n/a	n/a	n/a	n/a	n/a	n/a	n/a	n/a	n/a	n/a	n/a	n/a	n/a	n/a	n/a	0.0	0	0.7	3	6.2	18	10.5	28	3.6	49			
How often have you, in the past 30 days:																																												
Used an electronic vapor product as such as e-cigarettes, vapes, mods, e-cigs, e-hookahs, or vape pens?*	Never	96.0	458	82.3	367	65.5	312	60.0	273	76.1	1,410	98.8	414	90.6	435	79.5	338	71.0	298	85.1	1,485	98.4	379	96.9	403	86.5	249	78.9	210	91.6	1,241													
	Once or twice	3.6	17	11.7	52	16.2	77	15.2	69	11.6	215	1.2	5	6.5	31	9.9	42	11.2	47	7.2	125	1.6	6	1.9	8	5.6	16	7.5	20	3.7	50													
	Once or twice per week	0.2	1	3.4	15	6.7	32	5.5	25	3.9	73	0.0	0	1.7	8	2.6	11	5.7	24	2.5	43	0.0	0	0.2	1	1.7	5	1.5	4	0.7	10													
	About once a day	0.0	0	1.1	5	2.5	12	3.7	17	1.8	34	0.0	0	0.0	0	1.2	5	0.7	3	0.5	8	0.0	0	0.0	0	0.3	1	2.6	7	0.6	8													
	More than once a day	0.2	1	1.6	7	9.0	43	15.6	71	6.6	122	0.0	0	1.3	6	6.8	29	11.4	48	4.8	83	0.0	0	1.0	4	5.9	17	9.4	25	3.4	46													
If you used an electronic vapor product such as e-cigarettes, vapes, mods, e-cigs, e-hookahs, or vape pens during the past 12 months, with which substances did you use it?*	I did not vape	93.4	422	77.3	337	60.1	285	50.3	228	70.1	1,272	97.8	391	88.6	420	77.1	324	67.5	282	82.8	1,417	97.7	377	94.0	391	79.7	228	74.1	197	88.1	1,193													
	Just flavoring	4.4	20	13.3	58	19.4	92	15.7	71	13.3	241	0.0	0	6.3	30	7.4	31	11.7	49	6.4	110	0.5	2	1.9	8	5.6	16	5.3	14	3.0	40													
	Nicotine	0.9	4	9.6	42	25.1	119	36.0	163	18.1	328	0.3	1	4.6	22	16.0	67	23.9	100	11.1	190	0.3	1	4.1	17	15.4	44	21.4	57	8.8	119													
	Marijuana or THC	0.2	1	2.1	9	9.5	45	18.5	84	7.7	139	0.0	0	1.1	5	6.2	26	12.4	52	4.8	83	0.3	1	2.6	11	7.0	20	12.4	33	4.8	65													
	Other substance	0.2	1	0.7	3	0.4	2	0.7	3	0.5	9	0.0	0	0.2	1	0.5	2	0.0	0	0.2	3	0.8	3	0.5	2	0.7	2	0.0	0	0.5	7													
	I don't know	3.8	17	5.3	23	4.9	23	2.4	11	4.1	74	3.3	13	3.8	18	3.8	16	2.6	11	3.4	58	1.0	4	0.7	3	2.1	6	1.5	4	1.3	17													

\*The Pennsylvania Youth Survey (PAYS) was significantly revised from 2021 to 2023. Trend data are reported in this report when the data are comparable. When cells include an "n/a" notation, it means the question was either not asked in a previous administration or the question was revised in a way that the 2023 data are not directly comparable. Please note that any question with an \* at the end designates a question and/or response option that was part of this 2023 survey revision. Please see Appendix B of your Profile Report for a description of changes

## Substance Use: Other Drugs

Question	Response	County 2019										County 2021										County 2023									
		6th		8th		10th		12th		Total		6th		8th		10th		12th		Total		6th		8th		10th		12th		Total	
		%	n	%	n	%	n	%	n	%	n	%	n	%	n	%	n	%	n	%	n	%	n	%	n	%	n	%	n	%	n
Have you ever:																															
Used cocaine or crack?*	Never	n/a	n/a	n/a	n/a	n/a	n/a	n/a	n/a	n/a	n/a	n/a	n/a	n/a	n/a	n/a	n/a	n/a	n/a	n/a	n/a	100.0	389	99.8	416	99.7	289	97.7	260	99.4	1,354
	Once or twice	n/a	n/a	n/a	n/a	n/a	n/a	n/a	n/a	n/a	n/a	n/a	n/a	n/a	n/a	n/a	n/a	n/a	n/a	n/a	n/a	0.0	0	0.0	0	0.0	0	1.1	3	0.2	3
	Once in awhile but not regularly	n/a	n/a	n/a	n/a	n/a	n/a	n/a	n/a	n/a	n/a	n/a	n/a	n/a	n/a	n/a	n/a	n/a	n/a	n/a	n/a	0.0	0	0.0	0	0.0	0	0.4	1	0.1	1
	Regularly in the past	n/a	n/a	n/a	n/a	n/a	n/a	n/a	n/a	n/a	n/a	n/a	n/a	n/a	n/a	n/a	n/a	n/a	n/a	n/a	n/a	0.0	0	0.0	0	0.3	1	0.8	2	0.2	3
	Regularly now	n/a	n/a	n/a	n/a	n/a	n/a	n/a	n/a	n/a	n/a	n/a	n/a	n/a	n/a	n/a	n/a	n/a	n/a	n/a	n/a	0.0	0	0.2	1	0.0	0	0.0	0	0.1	1
How often have you, in the past 30 days:																															
Used cocaine or crack?*	Never	n/a	n/a	n/a	n/a	n/a	n/a	n/a	n/a	n/a	n/a	n/a	n/a	n/a	n/a	n/a	n/a	n/a	n/a	n/a	n/a	100.0	389	100.0	417	100.0	290	99.2	264	99.9	1,360
	Once or twice	n/a	n/a	n/a	n/a	n/a	n/a	n/a	n/a	n/a	n/a	n/a	n/a	n/a	n/a	n/a	n/a	n/a	n/a	n/a	n/a	0.0	0	0.0	0	0.0	0	0.4	1	0.1	1
	Once or twice per week	n/a	n/a	n/a	n/a	n/a	n/a	n/a	n/a	n/a	n/a	n/a	n/a	n/a	n/a	n/a	n/a	n/a	n/a	n/a	n/a	0.0	0	0.0	0	0.0	0	0.0	0	0.0	0
	About once a day	n/a	n/a	n/a	n/a	n/a	n/a	n/a	n/a	n/a	n/a	n/a	n/a	n/a	n/a	n/a	n/a	n/a	n/a	n/a	n/a	0.0	0	0.0	0	0.0	0	0.0	0	0.0	0
	More than once a day	n/a	n/a	n/a	n/a	n/a	n/a	n/a	n/a	n/a	n/a	n/a	n/a	n/a	n/a	n/a	n/a	n/a	n/a	n/a	n/a	0.0	0	0.0	0	0.0	0	0.4	1	0.1	1
Have you ever:																															
Used heroin?*	Never	n/a	n/a	n/a	n/a	n/a	n/a	n/a	n/a	n/a	n/a	n/a	n/a	n/a	n/a	n/a	n/a	n/a	n/a	n/a	n/a	99.7	382	100.0	421	99.7	287	98.9	263	99.6	1,353
	Once or twice	n/a	n/a	n/a	n/a	n/a	n/a	n/a	n/a	n/a	n/a	n/a	n/a	n/a	n/a	n/a	n/a	n/a	n/a	n/a	n/a	0.3	1	0.0	0	0.0	0	0.8	2	0.2	3
	Once in awhile but not regularly	n/a	n/a	n/a	n/a	n/a	n/a	n/a	n/a	n/a	n/a	n/a	n/a	n/a	n/a	n/a	n/a	n/a	n/a	n/a	n/a	0.0	0	0.0	0	0.0	0	0.0	0	0.0	0
	Regularly in the past	n/a	n/a	n/a	n/a	n/a	n/a	n/a	n/a	n/a	n/a	n/a	n/a	n/a	n/a	n/a	n/a	n/a	n/a	n/a	n/a	0.0	0	0.0	0	0.3	1	0.0	0	0.1	1
	Regularly now	n/a	n/a	n/a	n/a	n/a	n/a	n/a	n/a	n/a	n/a	n/a	n/a	n/a	n/a	n/a	n/a	n/a	n/a	n/a	n/a	0.0	0	0.0	0	0.0	0	0.4	1	0.1	1
How often have you, in the past 30 days:																															
Used heroin?*	Never	n/a	n/a	n/a	n/a	n/a	n/a	n/a	n/a	n/a	n/a	n/a	n/a	n/a	n/a	n/a	n/a	n/a	n/a	n/a	n/a	100.0	383	100.0	421	100.0	288	100.0	265	100.0	1,357
	Once or twice	n/a	n/a	n/a	n/a	n/a	n/a	n/a	n/a	n/a	n/a	n/a	n/a	n/a	n/a	n/a	n/a	n/a	n/a	n/a	n/a	0.0	0	0.0	0	0.0	0	0.0	0	0.0	0
	Once or twice per week	n/a	n/a	n/a	n/a	n/a	n/a	n/a	n/a	n/a	n/a	n/a	n/a	n/a	n/a	n/a	n/a	n/a	n/a	n/a	n/a	0.0	0	0.0	0	0.0	0	0.0	0	0.0	0
	About once a day	n/a	n/a	n/a	n/a	n/a	n/a	n/a	n/a	n/a	n/a	n/a	n/a	n/a	n/a	n/a	n/a	n/a	n/a	n/a	n/a	0.0	0	0.0	0	0.0	0	0.0	0	0.0	0
	More than once a day	n/a	n/a	n/a	n/a	n/a	n/a	n/a	n/a	n/a	n/a	n/a	n/a	n/a	n/a	n/a	n/a	n/a	n/a	n/a	n/a	0.0	0	0.0	0	0.0	0	0.0	0	0.0	0
Have you ever:																															
Used hallucinogens (acid, LSD, shrooms)?*	Never	n/a	n/a	n/a	n/a	n/a	n/a	n/a	n/a	n/a	n/a	n/a	n/a	n/a	n/a	n/a	n/a	n/a	n/a	n/a	n/a	99.2	373	99.8	414	97.6	283	92.9	248	97.8	1,318
	Once or twice	n/a	n/a	n/a	n/a	n/a	n/a	n/a	n/a	n/a	n/a	n/a	n/a	n/a	n/a	n/a	n/a	n/a	n/a	n/a	n/a	0.8	3	0.2	1	1.7	5	2.6	7	1.2	16
	Once in awhile but not regularly	n/a	n/a	n/a	n/a	n/a	n/a	n/a	n/a	n/a	n/a	n/a	n/a	n/a	n/a	n/a	n/a	n/a	n/a	n/a	n/a	0.0	0	0.0	0	0.0	0	2.6	7	0.5	7
	Regularly in the past	n/a	n/a	n/a	n/a	n/a	n/a	n/a	n/a	n/a	n/a	n/a	n/a	n/a	n/a	n/a	n/a	n/a	n/a	n/a	n/a	0.0	0	0.0	0	0.3	1	1.5	4	0.4	5
	Regularly now	n/a	n/a	n/a	n/a	n/a	n/a	n/a	n/a	n/a	n/a	n/a	n/a	n/a	n/a	n/a	n/a	n/a	n/a	n/a	n/a	0.0	0	0.0	0	0.3	1	0.4	1	0.1	2

\*The Pennsylvania Youth Survey (PAYS) was significantly revised from 2021 to 2023. Trend data are reported in this report when the data are comparable. When cells include an "n/a" notation, it means the question was either not asked in a previous administration or the question was revised in a way that the 2023 data are not directly comparable. Please note that any question with an \* at the end designates a question and/or response option that was part of this 2023 survey revision. Please see Appendix B of your Profile Report for a description of changes

**Substance Use: Other Drugs (continued)**

Question	Response	County 2019										County 2021										County 2023										
		6th		8th		10th		12th		Total		6th		8th		10th		12th		Total		6th		8th		10th		12th		Total		
		%	n	%	n	%	n	%	n	%	n	%	n	%	n	%	n	%	n	%	n	%	n	%	n	%	n	%	n	%	n	
How often have you, in the past 30 days:																																
Used hallucinogens (acid, LSD, shrooms)?*	Never	n/a	n/a	n/a	n/a	n/a	n/a	n/a	n/a	n/a	n/a	n/a	n/a	n/a	n/a	n/a	n/a	n/a	n/a	n/a	n/a	n/a	99.5	374	99.8	414	99.0	287	98.1	261	99.2	1,336
	Once or twice	n/a	n/a	n/a	n/a	n/a	n/a	n/a	n/a	n/a	n/a	n/a	n/a	n/a	n/a	n/a	n/a	n/a	n/a	n/a	n/a	n/a	0.5	2	0.2	1	0.7	2	1.5	4	0.7	9
	Once or twice per week	n/a	n/a	n/a	n/a	n/a	n/a	n/a	n/a	n/a	n/a	n/a	n/a	n/a	n/a	n/a	n/a	n/a	n/a	n/a	n/a	n/a	0.0	0	0.0	0	0.3	1	0.0	0	0.1	1
	About once a day	n/a	n/a	n/a	n/a	n/a	n/a	n/a	n/a	n/a	n/a	n/a	n/a	n/a	n/a	n/a	n/a	n/a	n/a	n/a	n/a	n/a	0.0	0	0.0	0	0.0	0	0.0	0	0.0	0
	More than once a day	n/a	n/a	n/a	n/a	n/a	n/a	n/a	n/a	n/a	n/a	n/a	n/a	n/a	n/a	n/a	n/a	n/a	n/a	n/a	n/a	n/a	0.0	0	0.0	0	0.0	0	0.4	1	0.1	1
Have you ever:																																
Used methamphetamine (meth, crystal meth, speed)?*	Never	n/a	n/a	n/a	n/a	n/a	n/a	n/a	n/a	n/a	n/a	n/a	n/a	n/a	n/a	n/a	n/a	n/a	n/a	n/a	n/a	98.7	373	100.0	417	99.7	288	98.5	260	99.3	1,338	
	Once or twice	n/a	n/a	n/a	n/a	n/a	n/a	n/a	n/a	n/a	n/a	n/a	n/a	n/a	n/a	n/a	n/a	n/a	n/a	n/a	n/a	n/a	1.1	4	0.0	0	0.0	0	0.8	2	0.4	6
	Once in awhile but not regularly	n/a	n/a	n/a	n/a	n/a	n/a	n/a	n/a	n/a	n/a	n/a	n/a	n/a	n/a	n/a	n/a	n/a	n/a	n/a	n/a	n/a	0.0	0	0.0	0	0.3	1	0.0	0	0.1	1
	Regularly in the past	n/a	n/a	n/a	n/a	n/a	n/a	n/a	n/a	n/a	n/a	n/a	n/a	n/a	n/a	n/a	n/a	n/a	n/a	n/a	n/a	n/a	0.3	1	0.0	0	0.0	0	0.4	1	0.1	2
	Regularly now	n/a	n/a	n/a	n/a	n/a	n/a	n/a	n/a	n/a	n/a	n/a	n/a	n/a	n/a	n/a	n/a	n/a	n/a	n/a	n/a	n/a	0.0	0	0.0	0	0.0	0	0.4	1	0.1	1
How often have you, in the past 30 days:																																
Used methamphetamine (meth, crystal meth, speed)?*	Never	n/a	n/a	n/a	n/a	n/a	n/a	n/a	n/a	n/a	n/a	n/a	n/a	n/a	n/a	n/a	n/a	n/a	n/a	n/a	n/a	98.9	374	100.0	417	100.0	289	99.2	262	99.6	1,342	
	Once or twice	n/a	n/a	n/a	n/a	n/a	n/a	n/a	n/a	n/a	n/a	n/a	n/a	n/a	n/a	n/a	n/a	n/a	n/a	n/a	n/a	n/a	0.5	2	0.0	0	0.0	0	0.0	0	0.1	2
	Once or twice per week	n/a	n/a	n/a	n/a	n/a	n/a	n/a	n/a	n/a	n/a	n/a	n/a	n/a	n/a	n/a	n/a	n/a	n/a	n/a	n/a	n/a	0.3	1	0.0	0	0.0	0	0.4	1	0.1	2
	About once a day	n/a	n/a	n/a	n/a	n/a	n/a	n/a	n/a	n/a	n/a	n/a	n/a	n/a	n/a	n/a	n/a	n/a	n/a	n/a	n/a	n/a	0.0	0	0.0	0	0.0	0	0.0	0	0.0	0
	More than once a day	n/a	n/a	n/a	n/a	n/a	n/a	n/a	n/a	n/a	n/a	n/a	n/a	n/a	n/a	n/a	n/a	n/a	n/a	n/a	n/a	n/a	0.3	1	0.0	0	0.0	0	0.4	1	0.1	2
Have you ever:																																
Used Ecstasy or Molly?*	Never	n/a	n/a	n/a	n/a	n/a	n/a	n/a	n/a	n/a	n/a	n/a	n/a	n/a	n/a	n/a	n/a	n/a	n/a	n/a	n/a	99.7	375	100.0	417	100.0	287	97.7	257	99.5	1,336	
	Once or twice	n/a	n/a	n/a	n/a	n/a	n/a	n/a	n/a	n/a	n/a	n/a	n/a	n/a	n/a	n/a	n/a	n/a	n/a	n/a	n/a	n/a	0.3	1	0.0	0	0.0	0	1.5	4	0.4	5
	Once in awhile but not regularly	n/a	n/a	n/a	n/a	n/a	n/a	n/a	n/a	n/a	n/a	n/a	n/a	n/a	n/a	n/a	n/a	n/a	n/a	n/a	n/a	n/a	0.0	0	0.0	0	0.0	0	0.4	1	0.1	1
	Regularly in the past	n/a	n/a	n/a	n/a	n/a	n/a	n/a	n/a	n/a	n/a	n/a	n/a	n/a	n/a	n/a	n/a	n/a	n/a	n/a	n/a	n/a	0.0	0	0.0	0	0.0	0	0.4	1	0.1	1
	Regularly now	n/a	n/a	n/a	n/a	n/a	n/a	n/a	n/a	n/a	n/a	n/a	n/a	n/a	n/a	n/a	n/a	n/a	n/a	n/a	n/a	n/a	0.0	0	0.0	0	0.0	0	0.0	0	0.0	0
How often have you, in the past 30 days:																																
Used Ecstasy or Molly?*	Never	n/a	n/a	n/a	n/a	n/a	n/a	n/a	n/a	n/a	n/a	n/a	n/a	n/a	n/a	n/a	n/a	n/a	n/a	n/a	n/a	99.7	375	100.0	417	100.0	287	100.0	263	99.9	1,342	
	Once or twice	n/a	n/a	n/a	n/a	n/a	n/a	n/a	n/a	n/a	n/a	n/a	n/a	n/a	n/a	n/a	n/a	n/a	n/a	n/a	n/a	n/a	0.3	1	0.0	0	0.0	0	0.0	0	0.1	1
	Once or twice per week	n/a	n/a	n/a	n/a	n/a	n/a	n/a	n/a	n/a	n/a	n/a	n/a	n/a	n/a	n/a	n/a	n/a	n/a	n/a	n/a	n/a	0.0	0	0.0	0	0.0	0	0.0	0	0.0	0
	About once a day	n/a	n/a	n/a	n/a	n/a	n/a	n/a	n/a	n/a	n/a	n/a	n/a	n/a	n/a	n/a	n/a	n/a	n/a	n/a	n/a	n/a	0.0	0	0.0	0	0.0	0	0.0	0	0.0	0
	More than once a day	n/a	n/a	n/a	n/a	n/a	n/a	n/a	n/a	n/a	n/a	n/a	n/a	n/a	n/a	n/a	n/a	n/a	n/a	n/a	n/a	n/a	0.0	0	0.0	0	0.0	0	0.0	0	0.0	0

\*The Pennsylvania Youth Survey (PAYS) was significantly revised from 2021 to 2023. Trend data are reported in this report when the data are comparable. When cells include an "n/a" notation, it means the question was either not asked in a previous administration or the question was revised in a way that the 2023 data are not directly comparable. Please note that any question with an \* at the end designates a question and/or response option that was part of this 2023 survey revision. Please see Appendix B of your Profile Report for a description of changes

### Substance Use: Other Drugs (continued)

Question	Response	County 2019										County 2021										County 2023																				
		6th		8th		10th		12th		Total		6th		8th		10th		12th		Total		6th		8th		10th		12th		Total												
		%	n	%	n	%	n	%	n	%	n	%	n	%	n	%	n	%	n	%	n	%	n	%	n	%	n	%	n	%	n											
Have you ever:																																										
Used synthetic drugs (man-made drugs such as K2, Spice, Fake Weed, Bath Salts)?*	Never	n/a	n/a	n/a	n/a	n/a	n/a	n/a	n/a	n/a	n/a	n/a	n/a	n/a	n/a	n/a	n/a	n/a	n/a	n/a	n/a	n/a	n/a	n/a	n/a	n/a	n/a	n/a	n/a	n/a	n/a	n/a	98.4	374	99.0	414	98.3	284	95.1	252	97.9	1,324
	Once or twice	n/a	n/a	n/a	n/a	n/a	n/a	n/a	n/a	n/a	n/a	n/a	n/a	n/a	n/a	n/a	n/a	n/a	n/a	n/a	n/a	n/a	n/a	n/a	n/a	n/a	n/a	n/a	n/a	n/a	n/a	n/a	1.3	5	0.5	2	1.0	3	2.6	7	1.3	17
	Once in awhile but not regularly	n/a	n/a	n/a	n/a	n/a	n/a	n/a	n/a	n/a	n/a	n/a	n/a	n/a	n/a	n/a	n/a	n/a	n/a	n/a	n/a	n/a	n/a	n/a	n/a	n/a	n/a	n/a	n/a	n/a	n/a	n/a	0.3	1	0.5	2	0.7	2	1.5	4	0.7	9
	Regularly in the past	n/a	n/a	n/a	n/a	n/a	n/a	n/a	n/a	n/a	n/a	n/a	n/a	n/a	n/a	n/a	n/a	n/a	n/a	n/a	n/a	n/a	n/a	n/a	n/a	n/a	n/a	n/a	n/a	n/a	n/a	n/a	0.0	0	0.0	0	0.0	0	0.4	1	0.1	1
	Regularly now	n/a	n/a	n/a	n/a	n/a	n/a	n/a	n/a	n/a	n/a	n/a	n/a	n/a	n/a	n/a	n/a	n/a	n/a	n/a	n/a	n/a	n/a	n/a	n/a	n/a	n/a	n/a	n/a	n/a	n/a	n/a	0.0	0	0.0	0	0.0	0	0.4	1	0.1	1
How often have you, in the past 30 days:																																										
Used synthetic drugs (man-made drugs such as K2, Spice, Fake Weed, Bath Salts)?*	Never	n/a	n/a	n/a	n/a	n/a	n/a	n/a	n/a	n/a	n/a	n/a	n/a	n/a	n/a	n/a	n/a	n/a	n/a	n/a	n/a	n/a	n/a	n/a	n/a	n/a	n/a	n/a	n/a	n/a	n/a	n/a	99.7	379	100.0	418	99.7	288	98.9	262	99.6	1,347
	Once or twice	n/a	n/a	n/a	n/a	n/a	n/a	n/a	n/a	n/a	n/a	n/a	n/a	n/a	n/a	n/a	n/a	n/a	n/a	n/a	n/a	n/a	n/a	n/a	n/a	n/a	n/a	n/a	n/a	n/a	n/a	n/a	0.3	1	0.0	0	0.3	1	0.4	1	0.2	3
	Once or twice per week	n/a	n/a	n/a	n/a	n/a	n/a	n/a	n/a	n/a	n/a	n/a	n/a	n/a	n/a	n/a	n/a	n/a	n/a	n/a	n/a	n/a	n/a	n/a	n/a	n/a	n/a	n/a	n/a	n/a	n/a	n/a	0.0	0	0.0	0	0.0	0	0.8	2	0.1	2
	About once a day	n/a	n/a	n/a	n/a	n/a	n/a	n/a	n/a	n/a	n/a	n/a	n/a	n/a	n/a	n/a	n/a	n/a	n/a	n/a	n/a	n/a	n/a	n/a	n/a	n/a	n/a	n/a	n/a	n/a	n/a	n/a	0.0	0	0.0	0	0.0	0	0.0	0	0.0	0
	More than once a day	n/a	n/a	n/a	n/a	n/a	n/a	n/a	n/a	n/a	n/a	n/a	n/a	n/a	n/a	n/a	n/a	n/a	n/a	n/a	n/a	n/a	n/a	n/a	n/a	n/a	n/a	n/a	n/a	n/a	n/a	n/a	0.0	0	0.0	0	0.0	0	0.0	0	0.0	0

### Substance Use: Prescription Drugs, Over-the-Counter Drugs and Performance Enhancing Drugs

Question	Response	County 2019										County 2021										County 2023																					
		6th		8th		10th		12th		Total		6th		8th		10th		12th		Total		6th		8th		10th		12th		Total													
		%	n	%	n	%	n	%	n	%	n	%	n	%	n	%	n	%	n	%	n	%	n	%	n	%	n	%	n	%	n												
Have you ever:																																											
Taken performance enhancing drugs (such as steroids, human growth hormone) without a doctor telling you to take them?*	Never	n/a	n/a	n/a	n/a	n/a	n/a	n/a	n/a	n/a	n/a	n/a	n/a	n/a	n/a	n/a	n/a	n/a	n/a	n/a	n/a	n/a	n/a	n/a	n/a	n/a	n/a	n/a	n/a	n/a	n/a	98.7	379	99.5	417	99.0	285	100.0	264	99.3	1,345		
	Once or twice	n/a	n/a	n/a	n/a	n/a	n/a	n/a	n/a	n/a	n/a	n/a	n/a	n/a	n/a	n/a	n/a	n/a	n/a	n/a	n/a	n/a	n/a	n/a	n/a	n/a	n/a	n/a	n/a	n/a	n/a	n/a	1.0	4	0.0	0	0.7	2	0.0	0	0.4	6	
	Once in awhile but not regularly	n/a	n/a	n/a	n/a	n/a	n/a	n/a	n/a	n/a	n/a	n/a	n/a	n/a	n/a	n/a	n/a	n/a	n/a	n/a	n/a	n/a	n/a	n/a	n/a	n/a	n/a	n/a	n/a	n/a	n/a	n/a	0.3	1	0.5	2	0.3	1	0.0	0	0.3	4	
	Regularly in the past	n/a	n/a	n/a	n/a	n/a	n/a	n/a	n/a	n/a	n/a	n/a	n/a	n/a	n/a	n/a	n/a	n/a	n/a	n/a	n/a	n/a	n/a	n/a	n/a	n/a	n/a	n/a	n/a	n/a	n/a	n/a	0.0	0	0.0	0	0.0	0	0.0	0	0.0	0	
	Regularly now	n/a	n/a	n/a	n/a	n/a	n/a	n/a	n/a	n/a	n/a	n/a	n/a	n/a	n/a	n/a	n/a	n/a	n/a	n/a	n/a	n/a	n/a	n/a	n/a	n/a	n/a	n/a	n/a	n/a	n/a	n/a	0.0	0	0.0	0	0.0	0	0.0	0	0.0	0	
How often have you, in the past 30 days:																																											
Used performance enhancing drugs (such as steroids, human growth hormone) without a doctor telling you to take them?*	Never	n/a	n/a	n/a	n/a	n/a	n/a	n/a	n/a	n/a	n/a	n/a	n/a	n/a	n/a	n/a	n/a	n/a	n/a	n/a	n/a	n/a	n/a	n/a	n/a	n/a	n/a	n/a	n/a	n/a	n/a	n/a	99.2	381	100.0	419	99.7	287	100.0	264	99.7	1,351	
	Once or twice	n/a	n/a	n/a	n/a	n/a	n/a	n/a	n/a	n/a	n/a	n/a	n/a	n/a	n/a	n/a	n/a	n/a	n/a	n/a	n/a	n/a	n/a	n/a	n/a	n/a	n/a	n/a	n/a	n/a	n/a	n/a	n/a	0.8	3	0.0	0	0.3	1	0.0	0	0.3	4
	Once or twice per week	n/a	n/a	n/a	n/a	n/a	n/a	n/a	n/a	n/a	n/a	n/a	n/a	n/a	n/a	n/a	n/a	n/a	n/a	n/a	n/a	n/a	n/a	n/a	n/a	n/a	n/a	n/a	n/a	n/a	n/a	n/a	n/a	0.0	0	0.0	0	0.0	0	0.0	0	0.0	0
	About once a day	n/a	n/a	n/a	n/a	n/a	n/a	n/a	n/a	n/a	n/a	n/a	n/a	n/a	n/a	n/a	n/a	n/a	n/a	n/a	n/a	n/a	n/a	n/a	n/a	n/a	n/a	n/a	n/a	n/a	n/a	n/a	n/a	0.0	0	0.0	0	0.0	0	0.0	0	0.0	0
	More than once a day	n/a	n/a	n/a	n/a	n/a	n/a	n/a	n/a	n/a	n/a	n/a	n/a	n/a	n/a	n/a	n/a	n/a	n/a	n/a	n/a	n/a	n/a	n/a	n/a	n/a	n/a	n/a	n/a	n/a	n/a	n/a	n/a	0.0	0	0.0	0	0.0	0	0.0	0	0.0	0

\*The Pennsylvania Youth Survey (PAYS) was significantly revised from 2021 to 2023. Trend data are reported in this report when the data are comparable. When cells include an "n/a" notation, it means the question was either not asked in a previous administration or the question was revised in a way that the 2023 data are not directly comparable. Please note that any question with an \* at the end designates a question and/or response option that was part of this 2023 survey revision. Please see Appendix B of your Profile Report for a description of changes

### Substance Use: Prescription Drugs, Over-the-Counter Drugs and Performance Enhancing Drugs (continued)

Question	Response	County 2019										County 2021										County 2023										
		6th		8th		10th		12th		Total		6th		8th		10th		12th		Total		6th		8th		10th		12th		Total		
		%	n	%	n	%	n	%	n	%	n	%	n	%	n	%	n	%	n	%	n	%	n	%	n	%	n	%	n	%	n	
Have you ever:																																
Used prescription pain relievers (such as Vicodin, OxyContin, Percocet, or Codeine) without a doctor telling you to take them?*	Never	n/a	n/a	n/a	n/a	n/a	n/a	n/a	n/a	n/a	n/a	n/a	n/a	n/a	n/a	n/a	n/a	n/a	n/a	n/a	n/a	n/a	97.3	364	98.3	413	94.5	274	95.5	252	96.7	1,303
	Once or twice	n/a	n/a	n/a	n/a	n/a	n/a	n/a	n/a	n/a	n/a	n/a	n/a	n/a	n/a	n/a	n/a	n/a	n/a	n/a	n/a	n/a	2.4	9	1.0	4	2.4	7	2.7	7	2.0	27
	Once in awhile but not regularly	n/a	n/a	n/a	n/a	n/a	n/a	n/a	n/a	n/a	n/a	n/a	n/a	n/a	n/a	n/a	n/a	n/a	n/a	n/a	n/a	n/a	0.3	1	0.7	3	1.4	4	1.1	3	0.8	11
	Regularly in the past	n/a	n/a	n/a	n/a	n/a	n/a	n/a	n/a	n/a	n/a	n/a	n/a	n/a	n/a	n/a	n/a	n/a	n/a	n/a	n/a	n/a	0.0	0	0.0	0	1.7	5	0.4	1	0.4	6
	Regularly now	n/a	n/a	n/a	n/a	n/a	n/a	n/a	n/a	n/a	n/a	n/a	n/a	n/a	n/a	n/a	n/a	n/a	n/a	n/a	n/a	n/a	0.0	0	0.0	0	0.0	0	0.4	1	0.1	1
How often have you, in the past 30 days:																																
Used prescription pain relievers (such as Vicodin, OxyContin, Percocet, or Codeine) without a doctor telling you to take them?*	Never	n/a	n/a	n/a	n/a	n/a	n/a	n/a	n/a	n/a	n/a	n/a	n/a	n/a	n/a	n/a	n/a	n/a	n/a	n/a	n/a	99.5	372	99.8	419	98.3	285	99.6	263	99.3	1,339	
	Once or twice	n/a	n/a	n/a	n/a	n/a	n/a	n/a	n/a	n/a	n/a	n/a	n/a	n/a	n/a	n/a	n/a	n/a	n/a	n/a	n/a	n/a	0.5	2	0.2	1	0.7	2	0.4	1	0.4	6
	Once or twice per week	n/a	n/a	n/a	n/a	n/a	n/a	n/a	n/a	n/a	n/a	n/a	n/a	n/a	n/a	n/a	n/a	n/a	n/a	n/a	n/a	n/a	0.0	0	0.0	0	0.0	0	0.0	0	0.0	0
	About once a day	n/a	n/a	n/a	n/a	n/a	n/a	n/a	n/a	n/a	n/a	n/a	n/a	n/a	n/a	n/a	n/a	n/a	n/a	n/a	n/a	n/a	0.0	0	0.0	0	0.7	2	0.0	0	0.1	2
	More than once a day	n/a	n/a	n/a	n/a	n/a	n/a	n/a	n/a	n/a	n/a	n/a	n/a	n/a	n/a	n/a	n/a	n/a	n/a	n/a	n/a	n/a	0.0	0	0.0	0	0.3	1	0.0	0	0.1	1
Have you ever:																																
Used prescription tranquilizers (such as Ambien, Lunesta, Valium, or Xanax) without a doctor telling you to take them?*	Never	n/a	n/a	n/a	n/a	n/a	n/a	n/a	n/a	n/a	n/a	n/a	n/a	n/a	n/a	n/a	n/a	n/a	n/a	n/a	n/a	99.5	369	98.8	413	97.6	282	96.2	255	98.2	1,319	
	Once or twice	n/a	n/a	n/a	n/a	n/a	n/a	n/a	n/a	n/a	n/a	n/a	n/a	n/a	n/a	n/a	n/a	n/a	n/a	n/a	n/a	n/a	0.5	2	1.2	5	1.7	5	3.0	8	1.5	20
	Once in awhile but not regularly	n/a	n/a	n/a	n/a	n/a	n/a	n/a	n/a	n/a	n/a	n/a	n/a	n/a	n/a	n/a	n/a	n/a	n/a	n/a	n/a	n/a	0.0	0	0.0	0	0.0	0	0.0	0	0.0	0
	Regularly in the past	n/a	n/a	n/a	n/a	n/a	n/a	n/a	n/a	n/a	n/a	n/a	n/a	n/a	n/a	n/a	n/a	n/a	n/a	n/a	n/a	n/a	0.0	0	0.0	0	0.7	2	0.8	2	0.3	4
	Regularly now	n/a	n/a	n/a	n/a	n/a	n/a	n/a	n/a	n/a	n/a	n/a	n/a	n/a	n/a	n/a	n/a	n/a	n/a	n/a	n/a	n/a	0.0	0	0.0	0	0.0	0	0.0	0	0.0	0
How often have you, in the past 30 days:																																
Used prescription tranquilizers (such as Ambien, Lunesta, Valium, or Xanax) without a doctor telling you to take them?*	Never	n/a	n/a	n/a	n/a	n/a	n/a	n/a	n/a	n/a	n/a	n/a	n/a	n/a	n/a	n/a	n/a	n/a	n/a	n/a	n/a	100.0	371	99.5	416	100.0	289	99.6	264	99.8	1,340	
	Once or twice	n/a	n/a	n/a	n/a	n/a	n/a	n/a	n/a	n/a	n/a	n/a	n/a	n/a	n/a	n/a	n/a	n/a	n/a	n/a	n/a	n/a	0.0	0	0.5	2	0.0	0	0.4	1	0.2	3
	Once or twice per week	n/a	n/a	n/a	n/a	n/a	n/a	n/a	n/a	n/a	n/a	n/a	n/a	n/a	n/a	n/a	n/a	n/a	n/a	n/a	n/a	n/a	0.0	0	0.0	0	0.0	0	0.0	0	0.0	0
	More than once a day	n/a	n/a	n/a	n/a	n/a	n/a	n/a	n/a	n/a	n/a	n/a	n/a	n/a	n/a	n/a	n/a	n/a	n/a	n/a	n/a	n/a	0.0	0	0.0	0	0.0	0	0.0	0	0.0	0
Have you ever:																																
Used prescription stimulants (such as Ritalin or Adderall) without a doctor telling you to take them?*	Never	n/a	n/a	n/a	n/a	n/a	n/a	n/a	n/a	n/a	n/a	n/a	n/a	n/a	n/a	n/a	n/a	n/a	n/a	n/a	n/a	98.4	362	98.1	411	95.8	277	95.1	253	97.1	1,303	
	Once or twice	n/a	n/a	n/a	n/a	n/a	n/a	n/a	n/a	n/a	n/a	n/a	n/a	n/a	n/a	n/a	n/a	n/a	n/a	n/a	n/a	n/a	1.1	4	1.7	7	2.1	6	3.0	8	1.9	25
	Once in awhile but not regularly	n/a	n/a	n/a	n/a	n/a	n/a	n/a	n/a	n/a	n/a	n/a	n/a	n/a	n/a	n/a	n/a	n/a	n/a	n/a	n/a	n/a	0.5	2	0.2	1	2.1	6	0.0	0	0.7	9
	Regularly in the past	n/a	n/a	n/a	n/a	n/a	n/a	n/a	n/a	n/a	n/a	n/a	n/a	n/a	n/a	n/a	n/a	n/a	n/a	n/a	n/a	n/a	0.0	0	0.0	0	0.0	0	1.9	5	0.4	5
	Regularly now	n/a	n/a	n/a	n/a	n/a	n/a	n/a	n/a	n/a	n/a	n/a	n/a	n/a	n/a	n/a	n/a	n/a	n/a	n/a	n/a	n/a	0.0	0	0.0	0	0.0	0	0.0	0	0.0	0

\*The Pennsylvania Youth Survey (PAYS) was significantly revised from 2021 to 2023. Trend data are reported in this report when the data are comparable. When cells include an "n/a" notation, it means the question was either not asked in a previous administration or the question was revised in a way that the 2023 data are not directly comparable. Please note that any question with an \* at the end designates a question and/or response option that was part of this 2023 survey revision. Please see Appendix B of your Profile Report for a description of changes

**Substance Use: Prescription Drugs, Over-the-Counter Drugs and Performance Enhancing Drugs (continued)**

Question	Response	County 2019										County 2021										County 2023																					
		6th		8th		10th		12th		Total		6th		8th		10th		12th		Total		6th		8th		10th		12th		Total													
		%	n	%	n	%	n	%	n	%	n	%	n	%	n	%	n	%	n	%	n	%	n	%	n	%	n	%	n	%	n												
How often have you, in the past 30 days:																																											
Used prescription stimulants (such as Ritalin or Adderall) without a doctor telling you to take them?*	Never	n/a	n/a	n/a	n/a	n/a	n/a	n/a	n/a	n/a	n/a	n/a	n/a	n/a	n/a	n/a	n/a	n/a	n/a	n/a	n/a	n/a	n/a	n/a	n/a	n/a	n/a	n/a	n/a	n/a	n/a	n/a	n/a	99.7	367	99.3	416	98.6	284	99.2	264	99.3	1,331
	Once or twice	n/a	n/a	n/a	n/a	n/a	n/a	n/a	n/a	n/a	n/a	n/a	n/a	n/a	n/a	n/a	n/a	n/a	n/a	n/a	n/a	n/a	n/a	n/a	n/a	n/a	n/a	n/a	n/a	n/a	n/a	n/a	0.3	1	0.7	3	1.4	4	0.8	2	0.7	10	
	Once or twice per week	n/a	n/a	n/a	n/a	n/a	n/a	n/a	n/a	n/a	n/a	n/a	n/a	n/a	n/a	n/a	n/a	n/a	n/a	n/a	n/a	n/a	n/a	n/a	n/a	n/a	n/a	n/a	n/a	n/a	n/a	n/a	0.0	0	0.0	0	0.0	0	0.0	0	0.0	0	
	About once a day	n/a	n/a	n/a	n/a	n/a	n/a	n/a	n/a	n/a	n/a	n/a	n/a	n/a	n/a	n/a	n/a	n/a	n/a	n/a	n/a	n/a	n/a	n/a	n/a	n/a	n/a	n/a	n/a	n/a	n/a	n/a	0.0	0	0.0	0	0.0	0	0.0	0	0.0	0	
	More than once a day	n/a	n/a	n/a	n/a	n/a	n/a	n/a	n/a	n/a	n/a	n/a	n/a	n/a	n/a	n/a	n/a	n/a	n/a	n/a	n/a	n/a	n/a	n/a	n/a	n/a	n/a	n/a	n/a	n/a	n/a	n/a	0.0	0	0.0	0	0.0	0	0.0	0	0.0	0	
Have you ever:																																											
Used over-the-counter medicine (cough syrup, cold medicine, etc.) in order to get high?*	Never	n/a	n/a	n/a	n/a	n/a	n/a	n/a	n/a	n/a	n/a	n/a	n/a	n/a	n/a	n/a	n/a	n/a	n/a	n/a	n/a	n/a	n/a	n/a	n/a	n/a	n/a	n/a	n/a	n/a	n/a	n/a	94.1	351	98.1	410	94.8	275	95.5	255	95.8	1,291	
	Once or twice	n/a	n/a	n/a	n/a	n/a	n/a	n/a	n/a	n/a	n/a	n/a	n/a	n/a	n/a	n/a	n/a	n/a	n/a	n/a	n/a	n/a	n/a	n/a	n/a	n/a	n/a	n/a	n/a	n/a	n/a	1.9	7	0.5	2	1.7	5	3.0	8	1.6	22		
	Once in awhile but not regularly	n/a	n/a	n/a	n/a	n/a	n/a	n/a	n/a	n/a	n/a	n/a	n/a	n/a	n/a	n/a	n/a	n/a	n/a	n/a	n/a	n/a	n/a	n/a	n/a	n/a	n/a	n/a	n/a	n/a	n/a	2.9	11	1.2	5	2.1	6	1.1	3	1.9	25		
	Regularly in the past	n/a	n/a	n/a	n/a	n/a	n/a	n/a	n/a	n/a	n/a	n/a	n/a	n/a	n/a	n/a	n/a	n/a	n/a	n/a	n/a	n/a	n/a	n/a	n/a	n/a	n/a	n/a	n/a	n/a	n/a	0.3	1	0.0	0	0.7	2	0.0	0	0.2	3		
	Regularly now	n/a	n/a	n/a	n/a	n/a	n/a	n/a	n/a	n/a	n/a	n/a	n/a	n/a	n/a	n/a	n/a	n/a	n/a	n/a	n/a	n/a	n/a	n/a	n/a	n/a	n/a	n/a	n/a	n/a	n/a	0.8	3	0.2	1	0.7	2	0.4	1	0.5	7		
How often have you, in the past 30 days:																																											
Used over-the-counter medicine (cough syrup, cold medicine, etc.) in order to get high?*	Never	n/a	n/a	n/a	n/a	n/a	n/a	n/a	n/a	n/a	n/a	n/a	n/a	n/a	n/a	n/a	n/a	n/a	n/a	n/a	n/a	n/a	n/a	n/a	n/a	n/a	n/a	n/a	n/a	n/a	n/a	n/a	96.8	360	99.3	415	98.3	285	98.9	264	98.3	1,324	
	Once or twice	n/a	n/a	n/a	n/a	n/a	n/a	n/a	n/a	n/a	n/a	n/a	n/a	n/a	n/a	n/a	n/a	n/a	n/a	n/a	n/a	n/a	n/a	n/a	n/a	n/a	n/a	n/a	n/a	n/a	n/a	2.2	8	0.5	2	1.4	4	1.1	3	1.3	17		
	Once or twice per week	n/a	n/a	n/a	n/a	n/a	n/a	n/a	n/a	n/a	n/a	n/a	n/a	n/a	n/a	n/a	n/a	n/a	n/a	n/a	n/a	n/a	n/a	n/a	n/a	n/a	n/a	n/a	n/a	n/a	n/a	0.5	2	0.0	0	0.3	1	0.0	0	0.2	3		
	About once a day	n/a	n/a	n/a	n/a	n/a	n/a	n/a	n/a	n/a	n/a	n/a	n/a	n/a	n/a	n/a	n/a	n/a	n/a	n/a	n/a	n/a	n/a	n/a	n/a	n/a	n/a	n/a	n/a	n/a	n/a	0.3	1	0.2	1	0.0	0	0.0	0	0.1	2		
	More than once a day	n/a	n/a	n/a	n/a	n/a	n/a	n/a	n/a	n/a	n/a	n/a	n/a	n/a	n/a	n/a	n/a	n/a	n/a	n/a	n/a	n/a	n/a	n/a	n/a	n/a	n/a	n/a	n/a	n/a	n/a	0.3	1	0.0	0	0.0	0	0.0	0	0.1	1		

\*The Pennsylvania Youth Survey (PAYS) was significantly revised from 2021 to 2023. Trend data are reported in this report when the data are comparable. When cells include an "n/a" notation, it means the question was either not asked in a previous administration or the question was revised in a way that the 2023 data are not directly comparable. Please note that any question with an \* at the end designates a question and/or response option that was part of this 2023 survey revision. Please see Appendix B of your Profile Report for a description of changes

## Substance Use: Risky Substance Related Behavior

Question	Response	County 2019										County 2021										County 2023									
		6th		8th		10th		12th		Total		6th		8th		10th		12th		Total		6th		8th		10th		12th		Total	
		%	n	%	n	%	n	%	n	%	n	%	n	%	n	%	n	%	n	%	n	%	n	%	n	%	n	%	n	%	n
Think back over the last two weeks. How many times have you had five or more alcoholic drinks in a row?	None	98.7	463	95.3	422	87.6	416	78.0	351	89.9	1,652	98.4	419	96.9	467	92.9	395	85.2	362	93.5	1,643	98.5	382	99.3	418	95.8	274	86.7	229	95.9	1,303
	Once	1.1	5	2.3	10	6.7	32	10.0	45	5.0	92	1.2	5	2.1	10	2.8	12	6.8	29	3.2	56	1.0	4	0.5	2	1.7	5	6.1	16	2.0	27
	Twice	0.2	1	1.8	8	2.7	13	5.6	25	2.6	47	0.2	1	0.8	4	1.4	6	3.8	16	1.5	27	0.0	0	0.2	1	1.7	5	3.8	10	1.2	16
	3-5 times	0.0	0	0.2	1	1.5	7	3.6	16	1.3	24	0.2	1	0.2	1	2.4	10	2.6	11	1.3	23	0.3	1	0.0	0	0.3	1	1.5	4	0.4	6
	6-9 times	0.0	0	0.5	2	0.4	2	0.9	4	0.4	8	0.0	0	0.0	0	0.0	0	0.7	3	0.2	3	0.0	0	0.0	0	0.3	1	1.1	3	0.3	4
	10 or more times	0.0	0	0.0	0	1.1	5	2.0	9	0.8	14	0.0	0	0.0	0	0.5	2	0.9	4	0.3	6	0.3	1	0.0	0	0.0	0	0.8	2	0.2	3
How often have you:																															
Driven a motor vehicle while or shortly after drinking alcohol? (Please Note: In 2021/2023 the questions about driving after drinking or having used alcohol were only asked of those that had used alcohol. In order to make all years of data as comparable as possible, those students in 2021/2023 answering that they had never used the substance in question were added to the driving questions results. Because it can not be determined if the student would have marked "I do not drive" or "Never", those categories have been combined across all years.) *	I don't drive / Never	99.3	269	96.6	259	96.3	289	87.5	239	95.0	1,056	99.5	413	97.7	459	98.3	394	92.2	364	97.0	1,630	99.5	378	99.3	409	98.6	272	94.8	237	98.3	1,296
	Before, but not in the past year	0.7	2	1.1	3	1.3	4	2.9	8	1.5	17	0.5	2	1.1	5	0.7	3	1.5	6	1.0	16	0.5	2	0.0	0	1.1	3	3.2	8	1.0	13
	About once or twice a year	0.0	0	1.5	4	1.7	5	4.0	11	1.8	20	0.0	0	0.9	4	0.7	3	4.3	17	1.4	24	0.0	0	0.5	2	0.0	0	0.8	2	0.3	4
	About once or twice a month	0.0	0	0.0	0	0.7	2	3.7	10	1.1	12	0.0	0	0.2	1	0.2	1	1.0	4	0.4	6	0.0	0	0.2	1	0.0	0	0.4	1	0.2	2
	About once or twice a week	0.0	0	0.0	0	0.0	0	0.4	1	0.1	1	0.0	0	0.0	0	0.0	0	0.3	1	0.1	1	0.0	0	0.0	0	0.4	1	0.0	0	0.1	1
	Almost every day	0.0	0	0.7	2	0.0	0	1.5	4	0.5	6	0.0	0	0.2	1	0.0	0	0.8	3	0.2	4	0.0	0	0.0	0	0.0	0	0.8	2	0.2	2
How often have you:																															
Driven a motor vehicle while or shortly after using marijuana (pot, hash, cannabis, weed, THC)? (Please Note: In 2021/2023 the questions about driving after drinking or having used alcohol were only asked of those that had used alcohol. In order to make all years of data as comparable as possible, those students in 2021/2023 answering that they had never used the substance in question were added to the driving questions results. Because it can not be determined if the student would have marked "I do not drive" or "Never", those categories have been combined across all years.) *	I don't drive / Never	100.0	266	97.8	264	96.7	295	84.3	231	94.7	1,056	100.0	424	99.4	478	97.8	406	92.8	384	97.6	1,692	100.0	387	99.8	413	98.9	274	92.5	236	98.3	1,310
	Before, but not in the past year	0.0	0	1.1	3	1.6	5	3.3	9	1.5	17	0.0	0	0.2	1	1.2	5	1.0	4	0.6	10	0.0	0	0.0	0	0.4	1	2.0	5	0.5	6
	About once or twice a year	0.0	0	0.4	1	1.0	3	4.4	12	1.4	16	0.0	0	0.4	2	0.2	1	2.4	10	0.7	13	0.0	0	0.0	0	0.7	2	1.6	4	0.5	6
	About once or twice a month	0.0	0	0.0	0	0.0	0	3.3	9	0.8	9	0.0	0	0.0	0	0.7	3	1.9	8	0.6	11	0.0	0	0.0	0	0.0	0	0.8	2	0.2	2
	About once or twice a week	0.0	0	0.0	0	0.3	1	1.8	5	0.5	6	0.0	0	0.0	0	0.0	0	0.2	1	0.1	1	0.0	0	0.2	1	0.0	0	0.8	2	0.2	3
	Almost every day	0.0	0	0.7	2	0.3	1	2.9	8	1.0	11	0.0	0	0.0	0	0.0	0	1.7	7	0.4	7	0.0	0	0.0	0	0.0	0	2.4	6	0.5	6

\*The Pennsylvania Youth Survey (PAYS) was significantly revised from 2021 to 2023. Trend data are reported in this report when the data are comparable. When cells include an "n/a" notation, it means the question was either not asked in a previous administration or the question was revised in a way that the 2023 data are not directly comparable. Please note that any question with an \* at the end designates a question and/or response option that was part of this 2023 survey revision. Please see Appendix B of your Profile Report for a description of changes













## Community and School Climate and Safety: Violence and Drugs on School Property

Question	Response	County 2019										County 2021										County 2023																			
		6th		8th		10th		12th		Total		6th		8th		10th		12th		Total		6th		8th		10th		12th		Total											
		%	n	%	n	%	n	%	n	%	n	%	n	%	n	%	n	%	n	%	n	%	n	%	n	%	n	%	n	%	n										
In the past 12 months, how often have you:																																									
Been threatened to be hit or beaten up on school property?*	Never	n/a	n/a	n/a	n/a	n/a	n/a	n/a	n/a	n/a	n/a	n/a	n/a	n/a	n/a	n/a	n/a	n/a	n/a	n/a	n/a	n/a	n/a	n/a	n/a	n/a	n/a	n/a	n/a	n/a	n/a	84.2	266	75.1	287	75.8	191	81.4	193	78.9	937
	Once or twice	n/a	n/a	n/a	n/a	n/a	n/a	n/a	n/a	n/a	n/a	n/a	n/a	n/a	n/a	n/a	n/a	n/a	n/a	n/a	n/a	n/a	n/a	n/a	n/a	n/a	n/a	n/a	n/a	n/a	n/a	11.1	35	18.6	71	19.0	48	11.4	27	15.2	181
	Several times	n/a	n/a	n/a	n/a	n/a	n/a	n/a	n/a	n/a	n/a	n/a	n/a	n/a	n/a	n/a	n/a	n/a	n/a	n/a	n/a	n/a	n/a	n/a	n/a	n/a	n/a	n/a	n/a	n/a	3.2	10	5.0	19	2.4	6	4.6	11	3.9	46	
	Often	n/a	n/a	n/a	n/a	n/a	n/a	n/a	n/a	n/a	n/a	n/a	n/a	n/a	n/a	n/a	n/a	n/a	n/a	n/a	n/a	n/a	n/a	n/a	n/a	n/a	n/a	n/a	n/a	n/a	1.6	5	1.3	5	2.8	7	2.5	6	1.9	23	
In the past 12 months, how often have you:																																									
Been attacked and hit by someone or beaten up on school property?*	Never	n/a	n/a	n/a	n/a	n/a	n/a	n/a	n/a	n/a	n/a	n/a	n/a	n/a	n/a	n/a	n/a	n/a	n/a	n/a	n/a	n/a	n/a	n/a	n/a	n/a	n/a	n/a	n/a	n/a	88.9	279	90.5	342	94.0	236	92.8	219	91.3	1,076	
	Once or twice	n/a	n/a	n/a	n/a	n/a	n/a	n/a	n/a	n/a	n/a	n/a	n/a	n/a	n/a	n/a	n/a	n/a	n/a	n/a	n/a	n/a	n/a	n/a	n/a	n/a	n/a	n/a	n/a	n/a	8.9	28	8.2	31	4.4	11	5.9	14	7.1	84	
	Several times	n/a	n/a	n/a	n/a	n/a	n/a	n/a	n/a	n/a	n/a	n/a	n/a	n/a	n/a	n/a	n/a	n/a	n/a	n/a	n/a	n/a	n/a	n/a	n/a	n/a	n/a	n/a	n/a	n/a	1.3	4	0.5	2	0.4	1	0.8	2	0.8	9	
	Often	n/a	n/a	n/a	n/a	n/a	n/a	n/a	n/a	n/a	n/a	n/a	n/a	n/a	n/a	n/a	n/a	n/a	n/a	n/a	n/a	n/a	n/a	n/a	n/a	n/a	n/a	n/a	n/a	n/a	1.0	3	0.8	3	1.2	3	0.4	1	0.8	10	
In the past 12 months, how often have you:																																									
Been offered, given, or sold alcohol, tobacco product or other drug on school property?*	Never	n/a	n/a	n/a	n/a	n/a	n/a	n/a	n/a	n/a	n/a	n/a	n/a	n/a	n/a	n/a	n/a	n/a	n/a	n/a	n/a	n/a	n/a	n/a	n/a	n/a	n/a	n/a	n/a	n/a	99.0	309	94.7	360	79.1	200	80.5	190	89.7	1,059	
	Once or twice	n/a	n/a	n/a	n/a	n/a	n/a	n/a	n/a	n/a	n/a	n/a	n/a	n/a	n/a	n/a	n/a	n/a	n/a	n/a	n/a	n/a	n/a	n/a	n/a	n/a	n/a	n/a	n/a	n/a	0.6	2	3.9	15	14.2	36	12.3	29	6.9	82	
	Several times	n/a	n/a	n/a	n/a	n/a	n/a	n/a	n/a	n/a	n/a	n/a	n/a	n/a	n/a	n/a	n/a	n/a	n/a	n/a	n/a	n/a	n/a	n/a	n/a	n/a	n/a	n/a	n/a	n/a	0.0	0	0.5	2	5.1	13	3.8	9	2.0	24	
	Often	n/a	n/a	n/a	n/a	n/a	n/a	n/a	n/a	n/a	n/a	n/a	n/a	n/a	n/a	n/a	n/a	n/a	n/a	n/a	n/a	n/a	n/a	n/a	n/a	n/a	n/a	n/a	n/a	n/a	0.3	1	0.8	3	1.6	4	3.4	8	1.4	16	
How many times in the past 12 months have you:																																									
Brought a weapon (such as a handgun, knife, etc.) to school?*	Never	n/a	n/a	n/a	n/a	n/a	n/a	n/a	n/a	n/a	n/a	n/a	n/a	n/a	n/a	n/a	n/a	n/a	n/a	n/a	n/a	n/a	n/a	n/a	n/a	n/a	n/a	n/a	n/a	n/a	98.4	309	99.2	375	98.4	246	97.4	228	98.5	1,158	
	Once or twice	n/a	n/a	n/a	n/a	n/a	n/a	n/a	n/a	n/a	n/a	n/a	n/a	n/a	n/a	n/a	n/a	n/a	n/a	n/a	n/a	n/a	n/a	n/a	n/a	n/a	n/a	n/a	n/a	n/a	1.6	5	0.8	3	1.6	4	2.1	5	1.4	17	
	Several times	n/a	n/a	n/a	n/a	n/a	n/a	n/a	n/a	n/a	n/a	n/a	n/a	n/a	n/a	n/a	n/a	n/a	n/a	n/a	n/a	n/a	n/a	n/a	n/a	n/a	n/a	n/a	n/a	n/a	0.0	0	0.0	0	0.0	0	0.0	0	0.0	0	
	Often	n/a	n/a	n/a	n/a	n/a	n/a	n/a	n/a	n/a	n/a	n/a	n/a	n/a	n/a	n/a	n/a	n/a	n/a	n/a	n/a	n/a	n/a	n/a	n/a	n/a	n/a	n/a	n/a	n/a	0.0	0	0.0	0	0.0	0	0.4	1	0.1	1	

\*The Pennsylvania Youth Survey (PAYS) was significantly revised from 2021 to 2023. Trend data are reported in this report when the data are comparable. When cells include an "n/a" notation, it means the question was either not asked in a previous administration or the question was revised in a way that the 2023 data are not directly comparable. Please note that any question with an \* at the end designates a question and/or response option that was part of this 2023 survey revision. Please see Appendix B of your Profile Report for a description of changes







### Stressful Events and Sleep (continued)

Question	Response	County 2019										County 2021										County 2023									
		6th		8th		10th		12th		Total		6th		8th		10th		12th		Total		6th		8th		10th		12th		Total	
		%	n	%	n	%	n	%	n	%	n	%	n	%	n	%	n	%	n	%	n	%	n	%	n	%	n	%	n	%	n
How many times have you changed homes in the past 12 months?	Never	74.9	215	76.9	226	81.9	258	88.1	259	80.5	958	84.5	284	84.8	356	86.3	314	87.3	315	85.7	1,269	78.7	236	84.6	314	89.1	220	84.0	194	83.9	964
	1	17.1	49	16.0	47	12.7	40	7.1	21	13.2	157	9.8	33	10.2	43	11.0	40	10.0	36	10.3	152	12.0	36	12.1	45	6.1	15	11.7	27	10.7	123
	2	3.5	10	3.4	10	2.9	9	2.4	7	3.0	36	2.4	8	1.9	8	1.6	6	1.4	5	1.8	27	5.3	16	1.9	7	2.8	7	3.0	7	3.2	37
	3 or more	4.5	13	3.7	11	2.5	8	2.4	7	3.3	39	3.3	11	3.1	13	1.1	4	1.4	5	2.2	33	4.0	12	1.3	5	2.0	5	1.3	3	2.2	25
How many times have you changed homes including the past 12 months, in the last 3 years?	Never	69.3	194	65.8	194	68.4	214	76.5	224	69.9	826	69.7	232	64.3	272	73.2	271	74.9	272	70.3	1,047	57.5	168	65.0	240	65.6	164	70.3	166	64.3	738
	1	16.8	47	18.3	54	18.8	59	14.7	43	17.2	203	20.7	69	23.9	101	15.9	59	11.8	43	18.3	272	25.3	74	23.0	85	18.0	45	19.9	47	21.9	251
	2	6.8	19	6.4	19	7.0	22	4.1	12	6.1	72	4.2	14	6.4	27	5.4	20	8.0	29	6.0	90	8.6	25	6.2	23	9.2	23	5.1	12	7.2	83
	3 or more	7.1	20	9.5	28	5.8	18	4.8	14	6.8	80	5.4	18	5.4	23	5.4	20	5.2	19	5.4	80	8.6	25	5.7	21	7.2	18	4.7	11	6.5	75